



# IUCRC PROGRAM FINDINGS FROM THE CENTER STRUCTURE DATABASE

- DRAFT RESULTS: FY 2008-2009
- TRENDS FROM CENTER STRUCTURE DATABASE: 1980-2009

*Gray, D.O. & McGowen, L.  
North Carolina State University*



# FY 2008-2009 STRUCTURAL INFORMATION

---

## ■ PRESENTATION

- BASED ON DRAFT REPORT FOR FY 2009
  - **SOME SLIDES (\*) BASED ON CURRENT (FY 2010) INFORMATION**

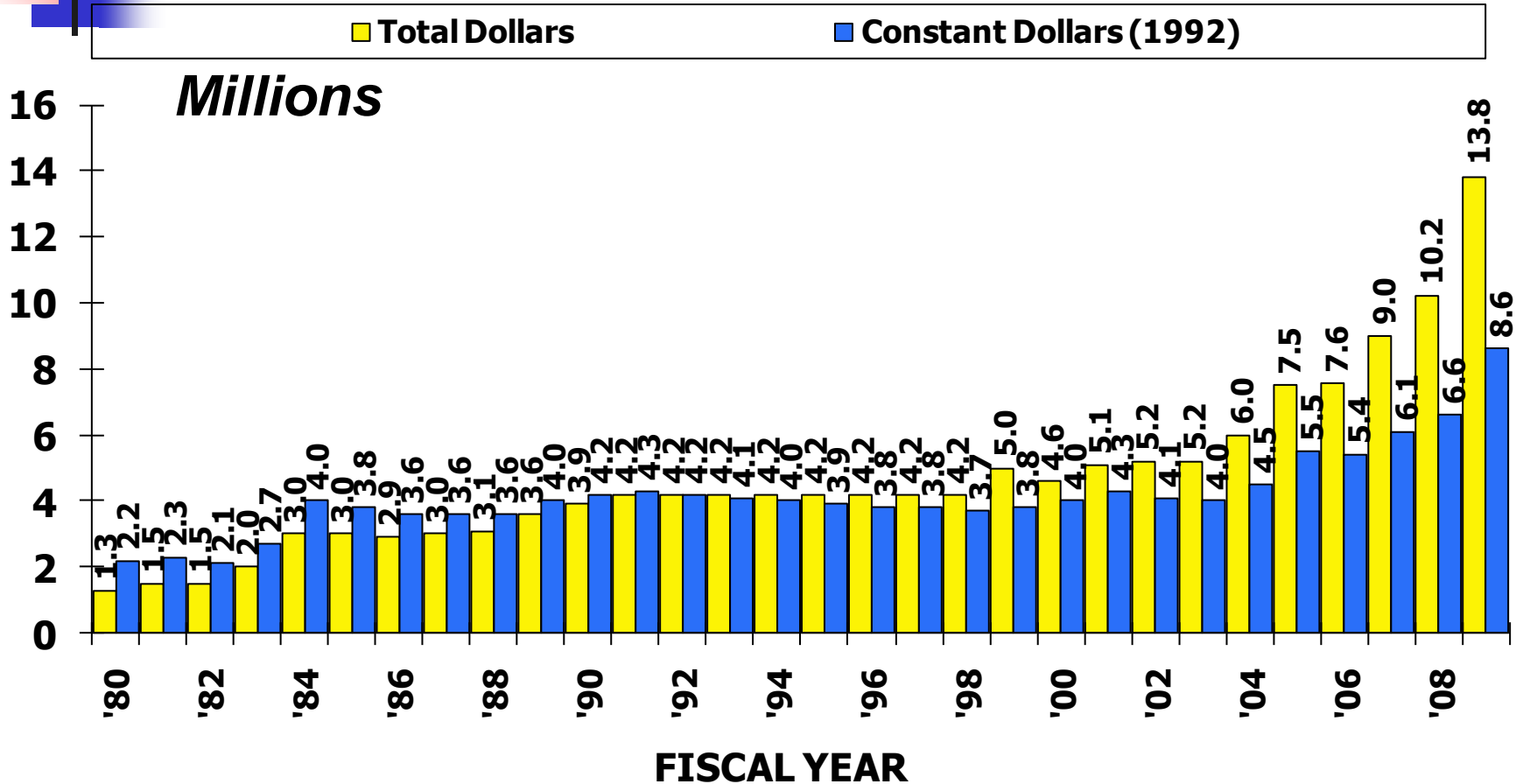
## ■ FINAL VERSION

- FINAL TABLES WILL BE E-MAILED
- MEMBERSHIP REPORT

## ■ RESPONSE RATE

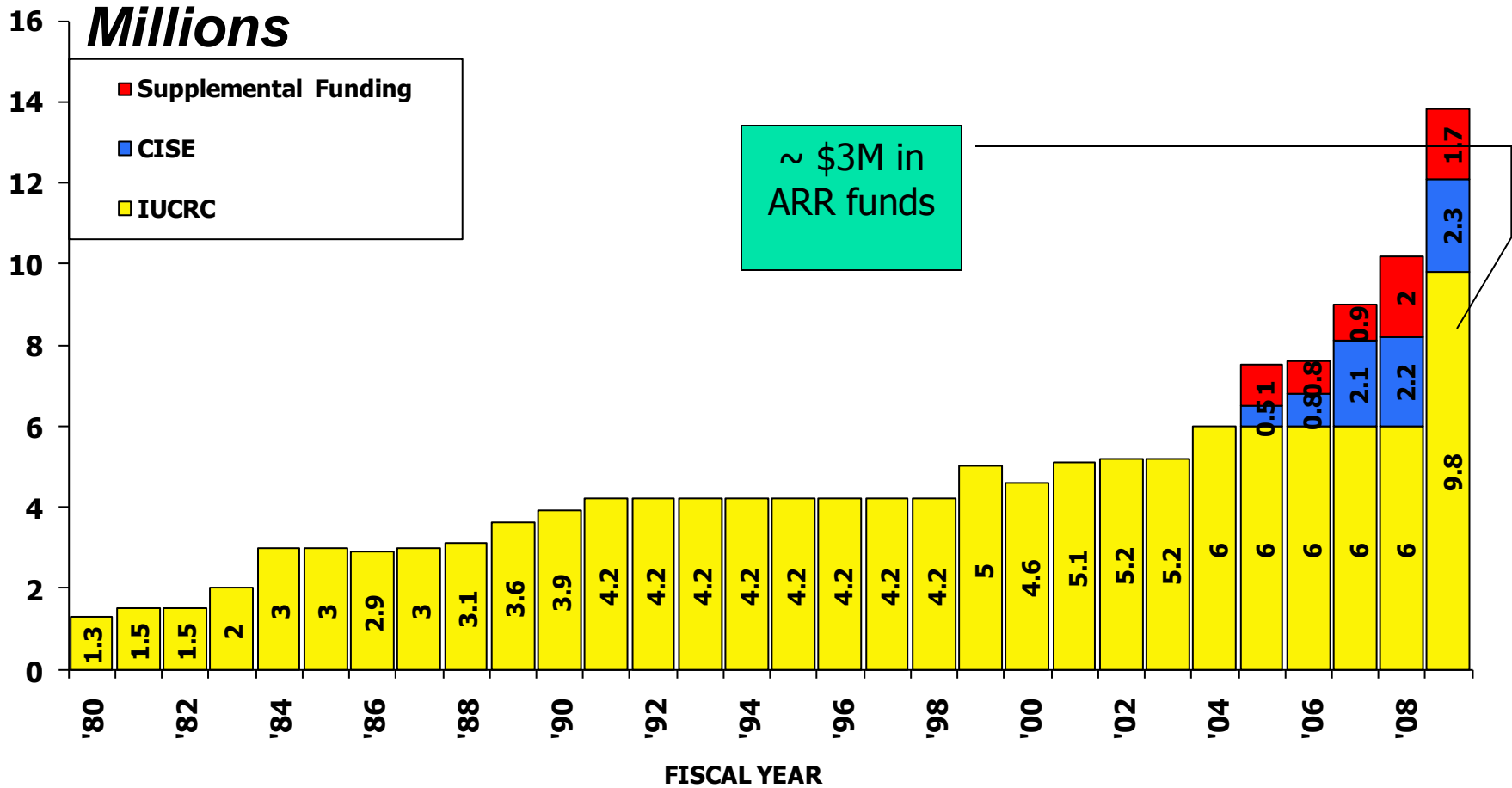
- 37 CENTERS IN OPERATION DURING FY 2008-2009
- 36 OUT OF 37 CENTERS RESPONDED

# NSF BUDGET BY YEAR

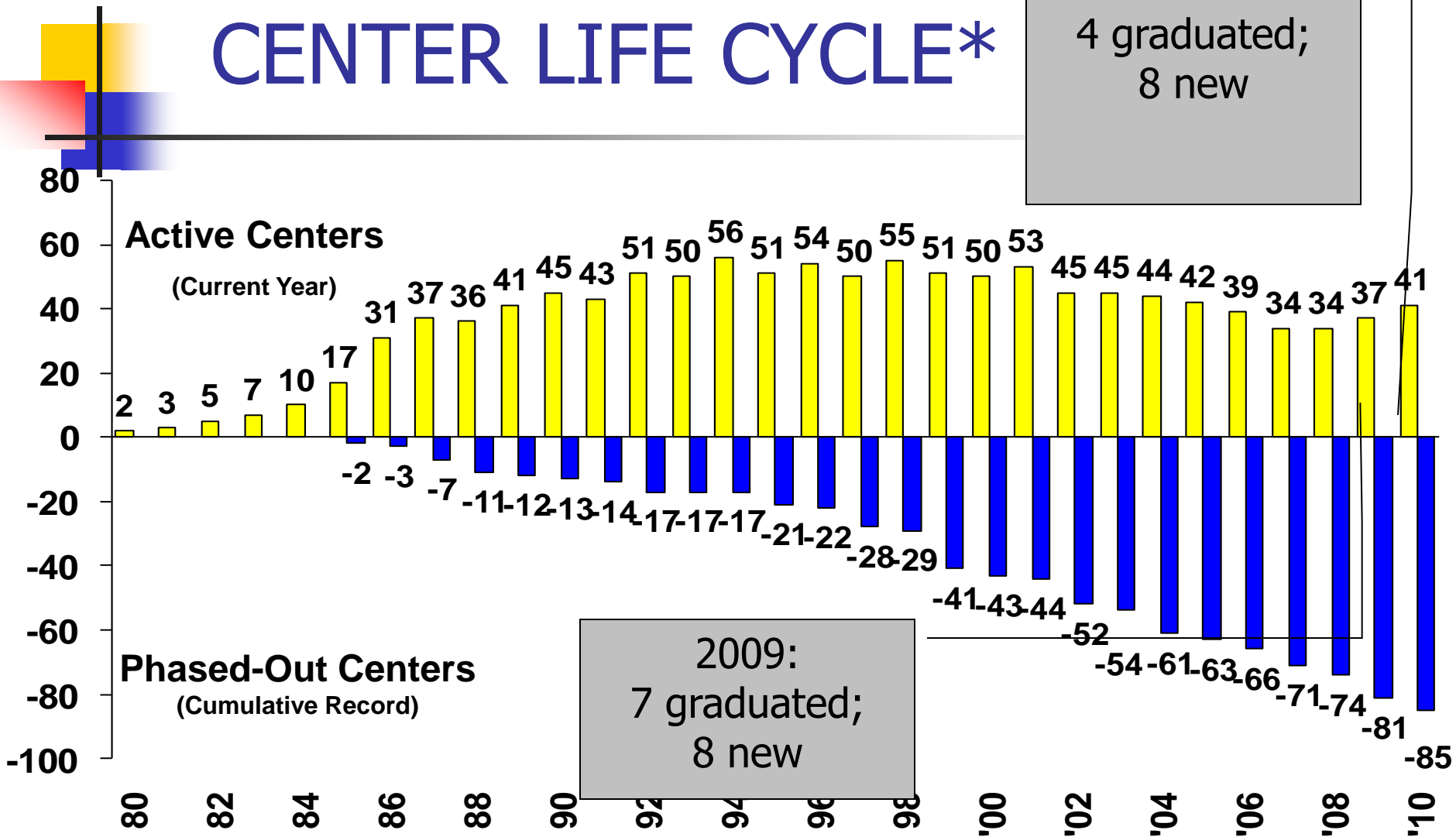


Note 1: 1992 dollars calculated at: <http://www.minneapolisfed.org/> Note 2: 2005-2009: Include Supplemental Funding and CISE

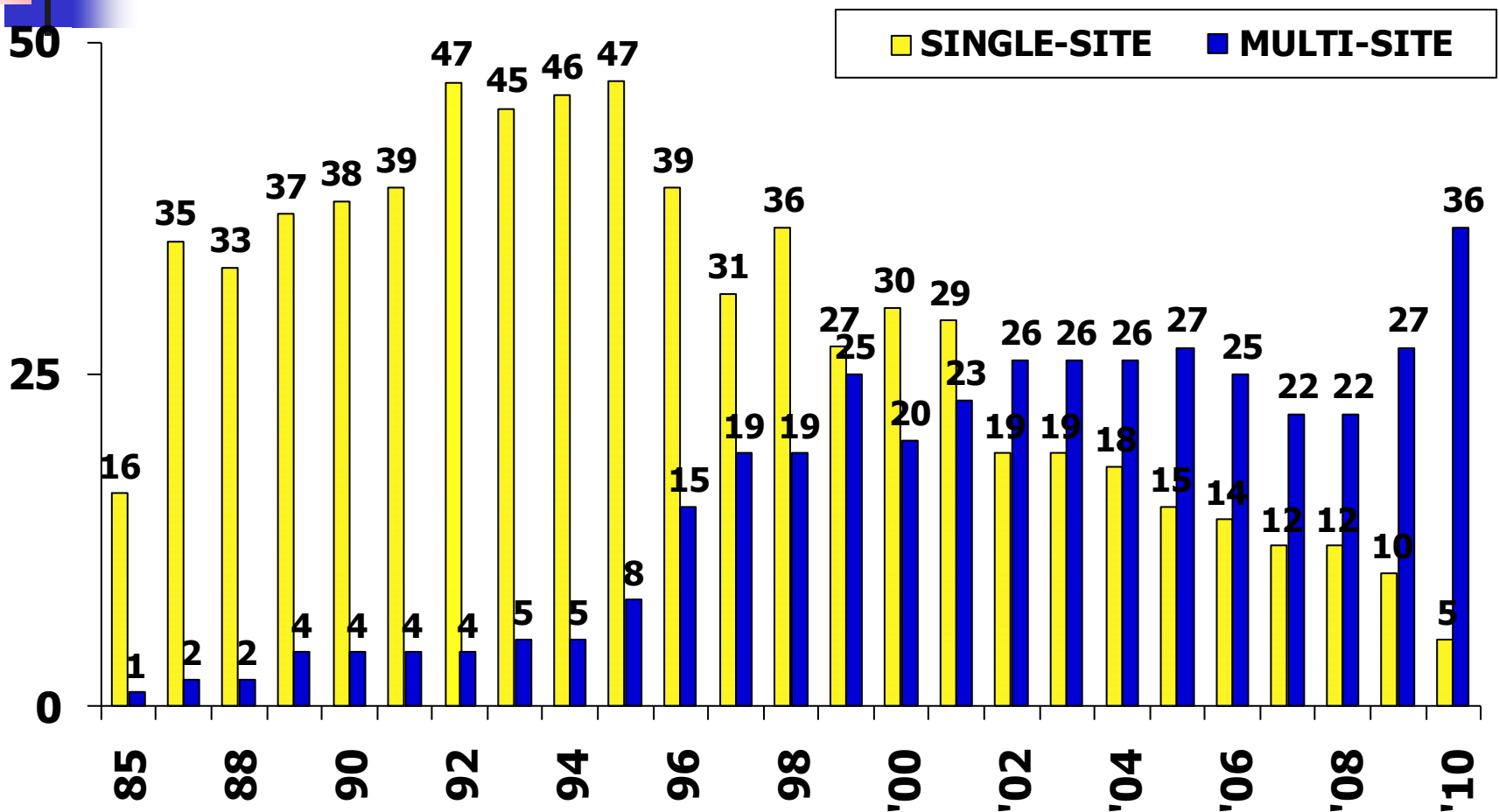
# NSF BUDGET BY YEAR



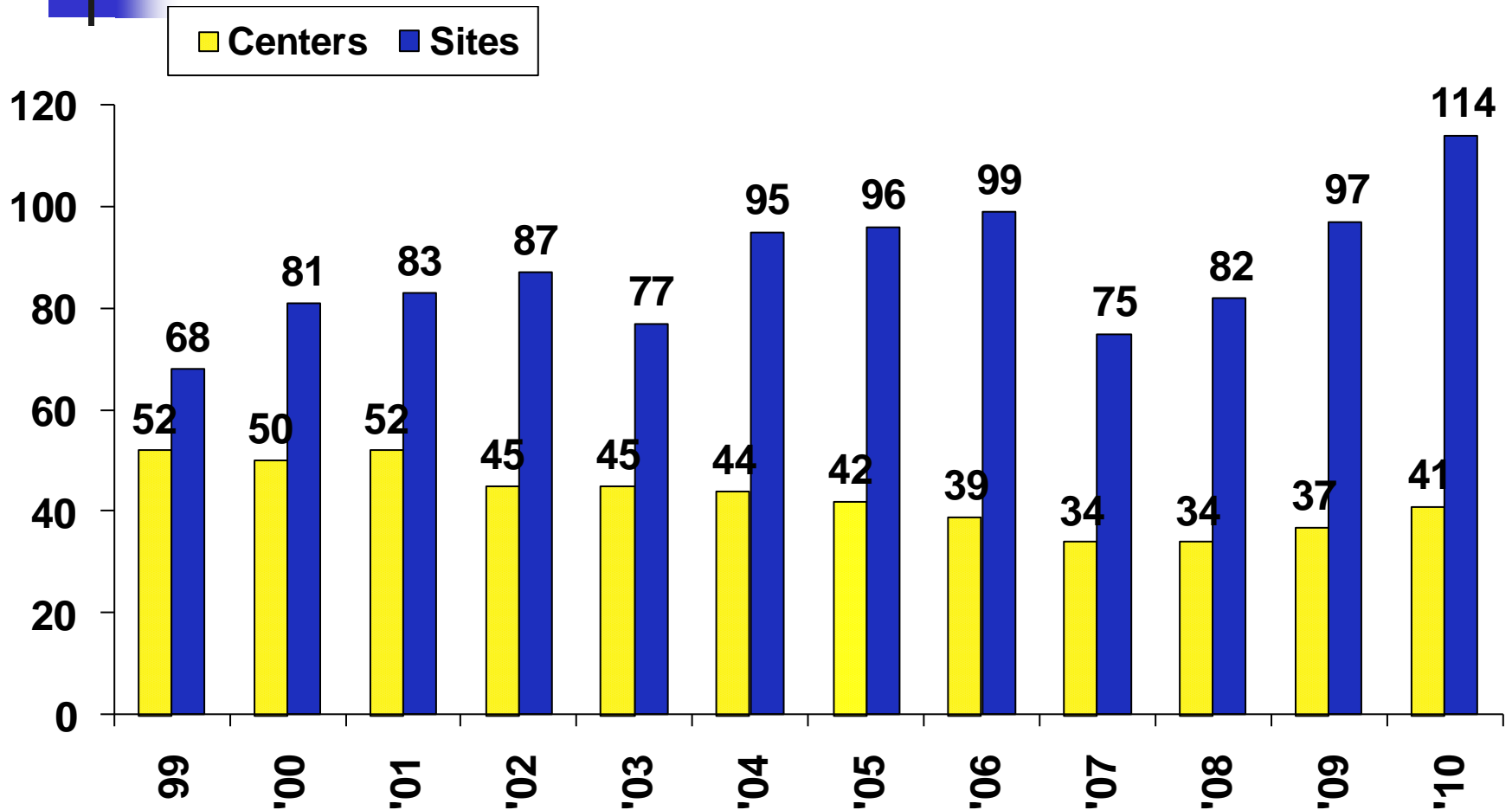
# CENTER LIFE CYCLE\*



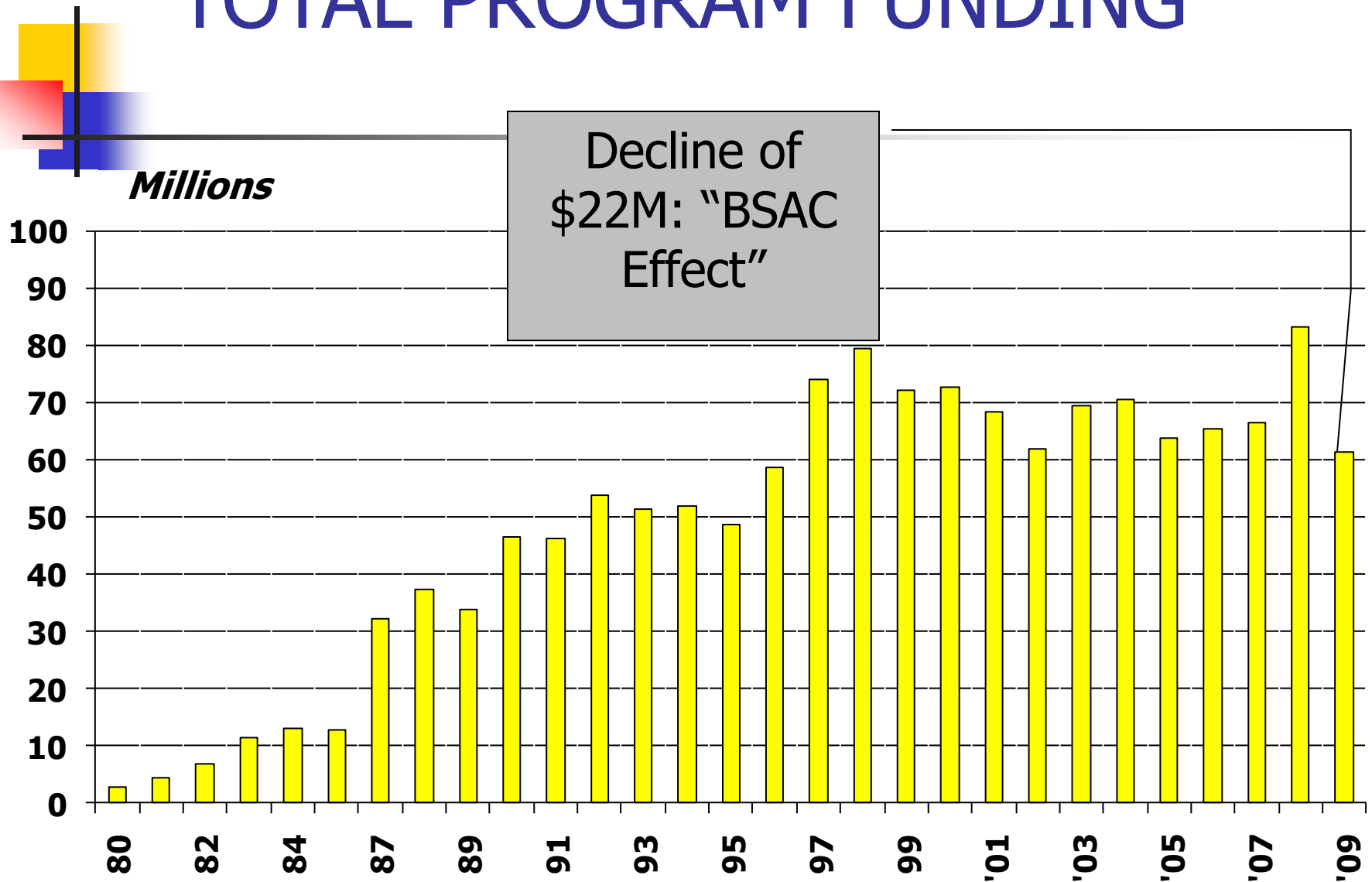
# SINGLE AND MULTI-SITE CENTERS BY YEAR\*



# ACTIVE CENTERS AND SITES BY YEAR\*

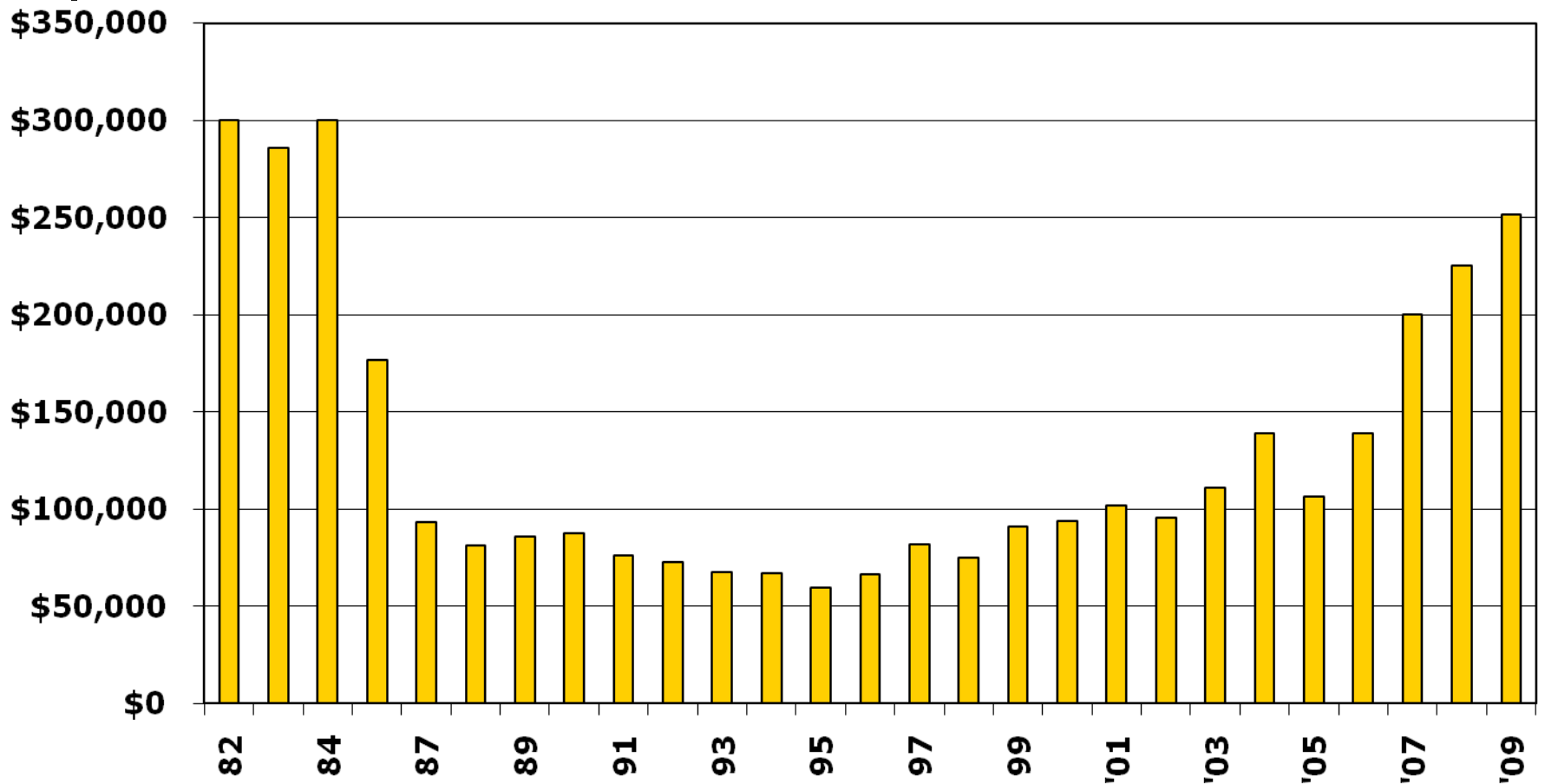


# TOTAL PROGRAM FUNDING

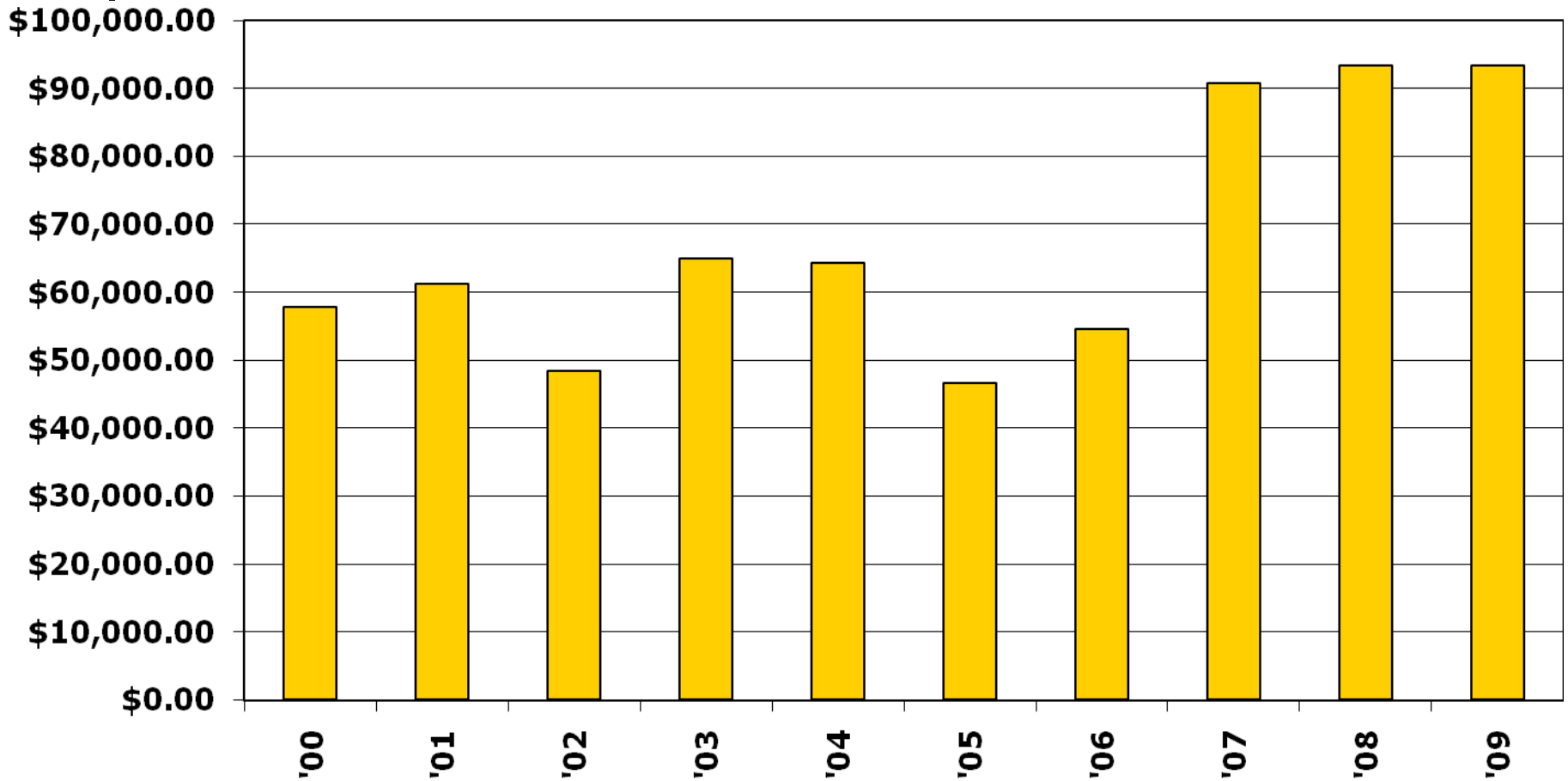
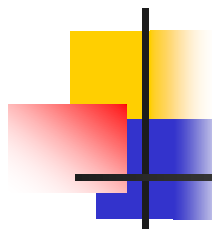




# AVERAGE NSF IUCRC FUNDING PER CENTER



# AVERAGE NSF IUCRC FUNDING PER SITE

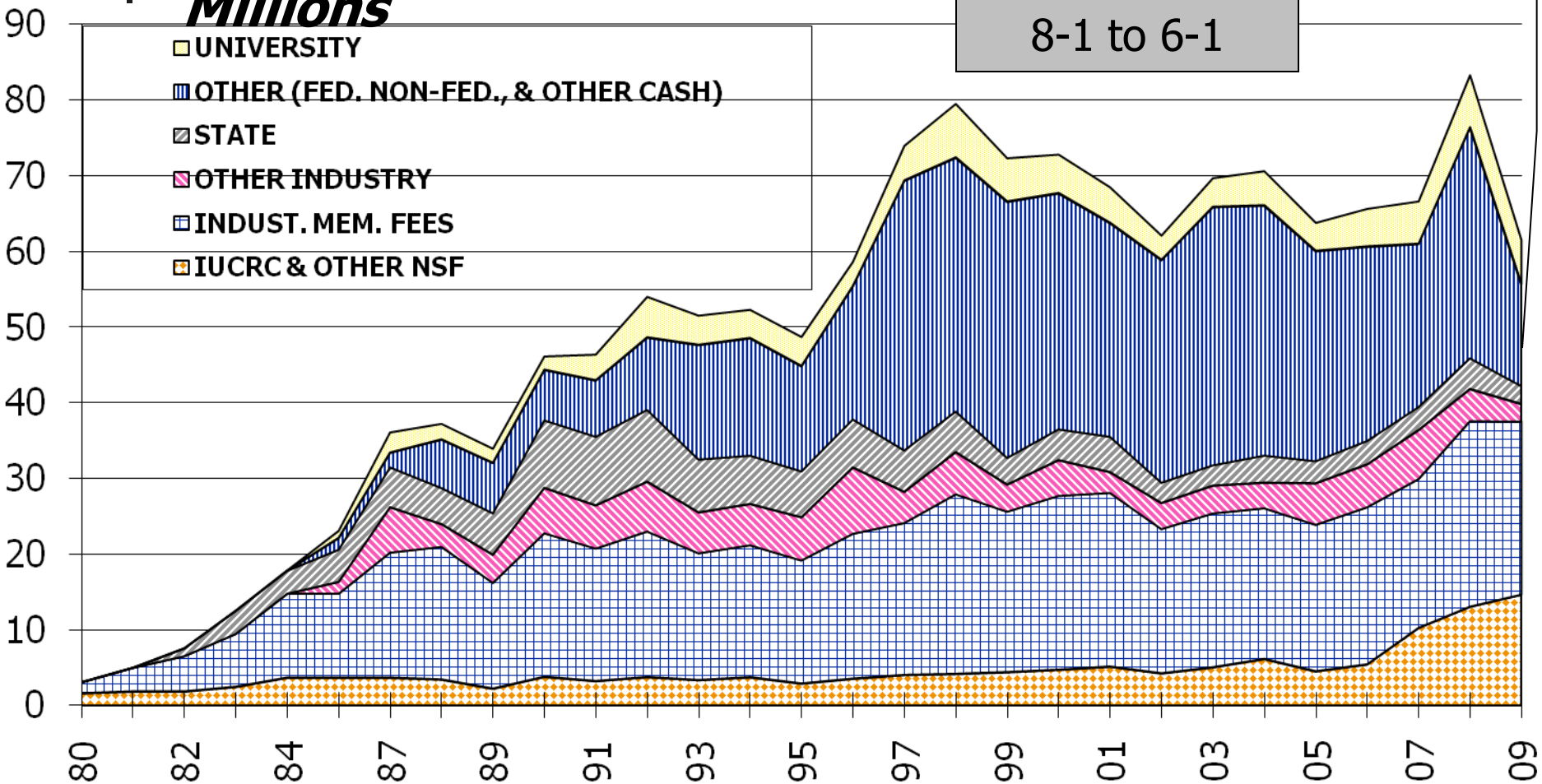


# TOTAL FUNDING BY SOURCE BY YEAR IN DOLLARS

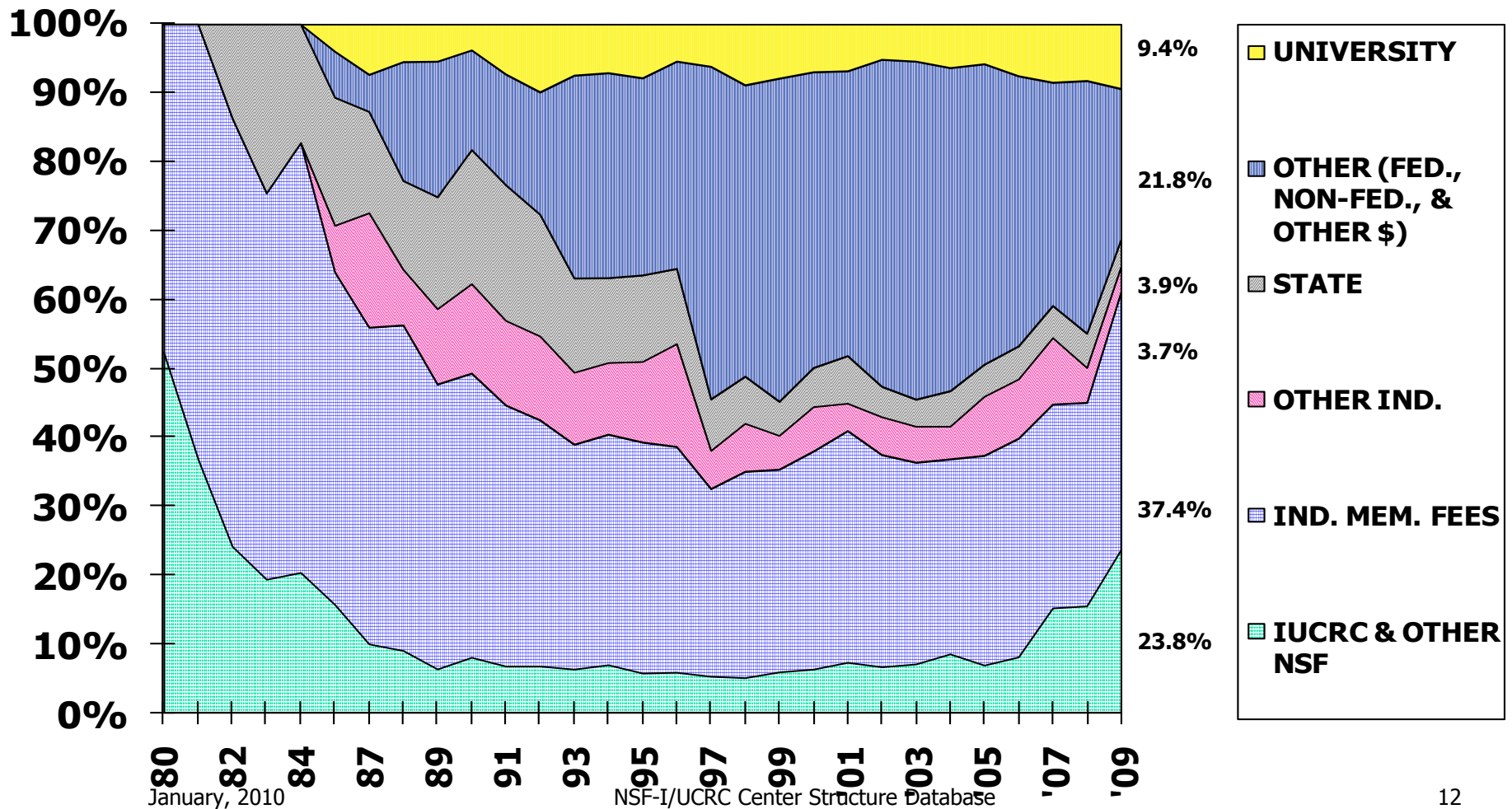
**Millions**

NSF leveraging declines from 8-1 to 6-1

- UNIVERSITY
- OTHER (FED. NON-FED., & OTHER CASH)
- STATE
- OTHER INDUSTRY
- INDUST. MEM. FEES
- IUCRC & OTHER NSF

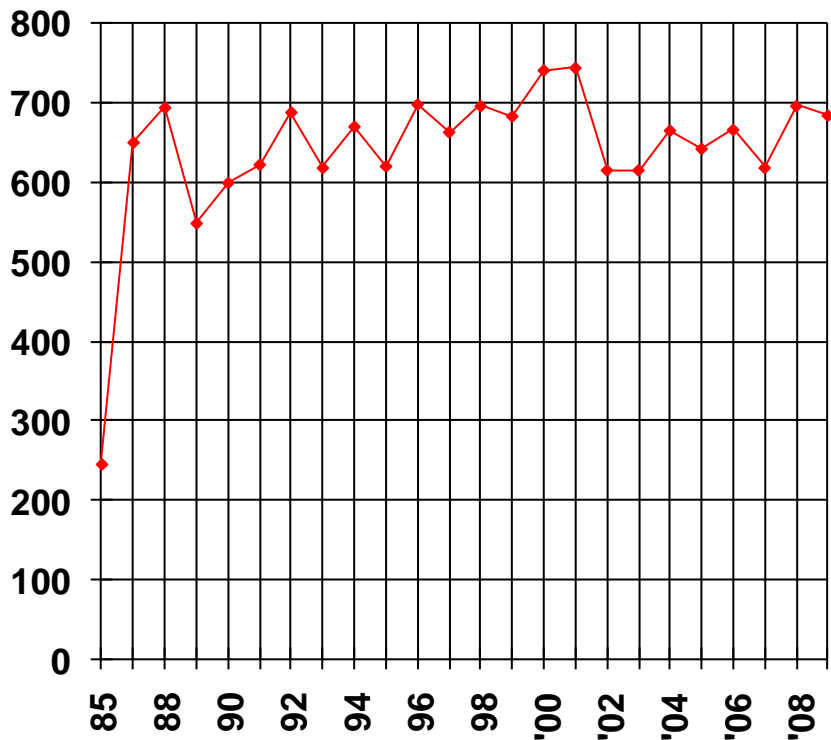


# TOTAL FUNDING BY SOURCE BY YEAR IN PERCENTAGES

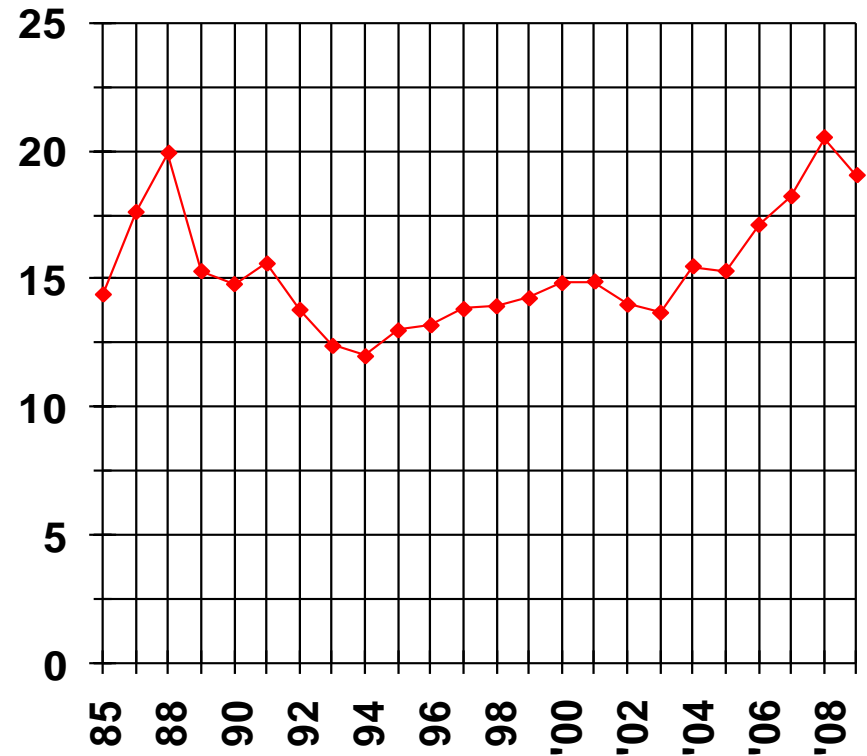


# INDUSTRIAL MEMBERSHIPS BY YEAR

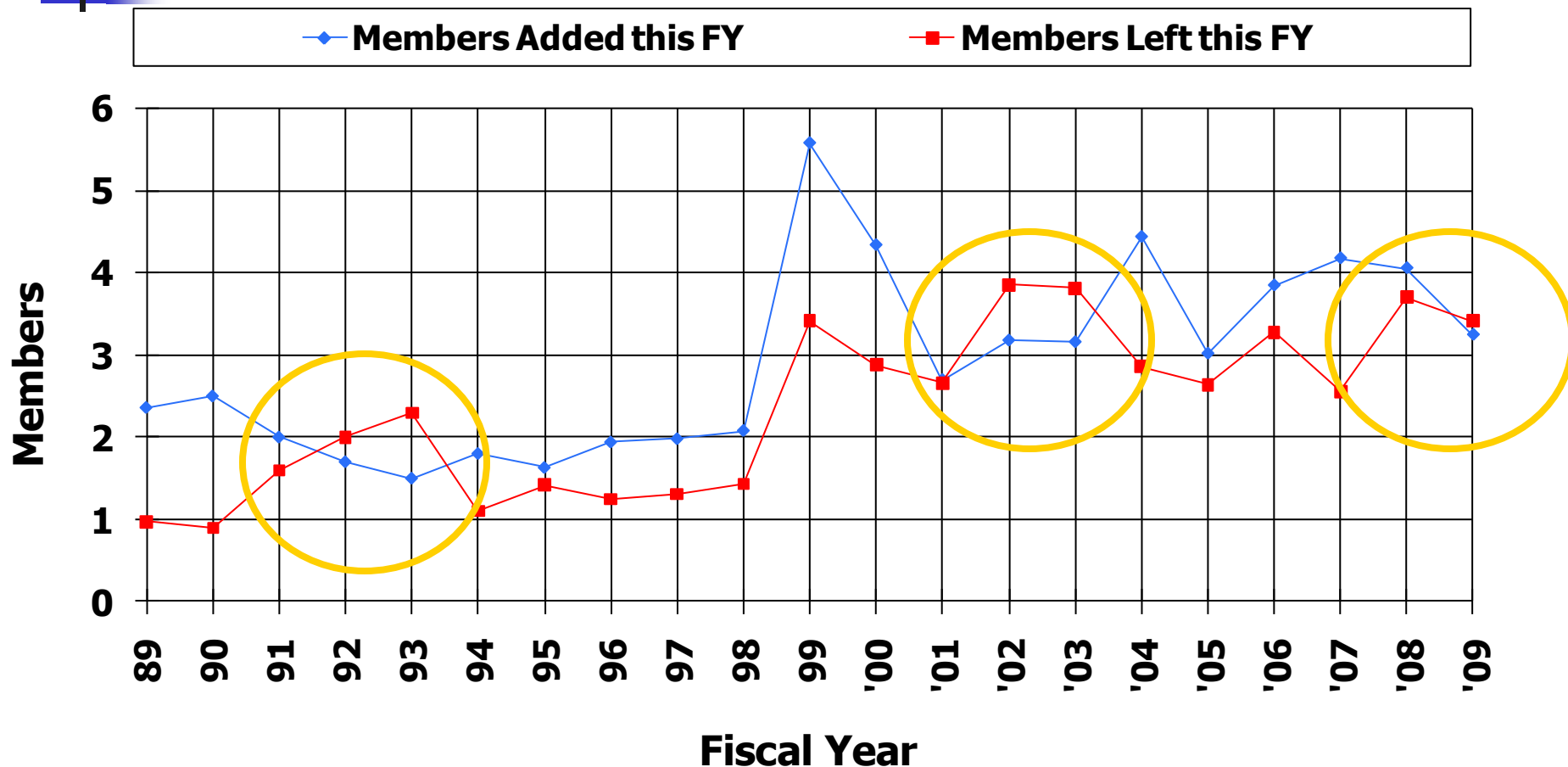
*TOTAL NUMBER OF MEMBERS*



*AVERAGE NUMBER OF MEMBERS PER CENTER*



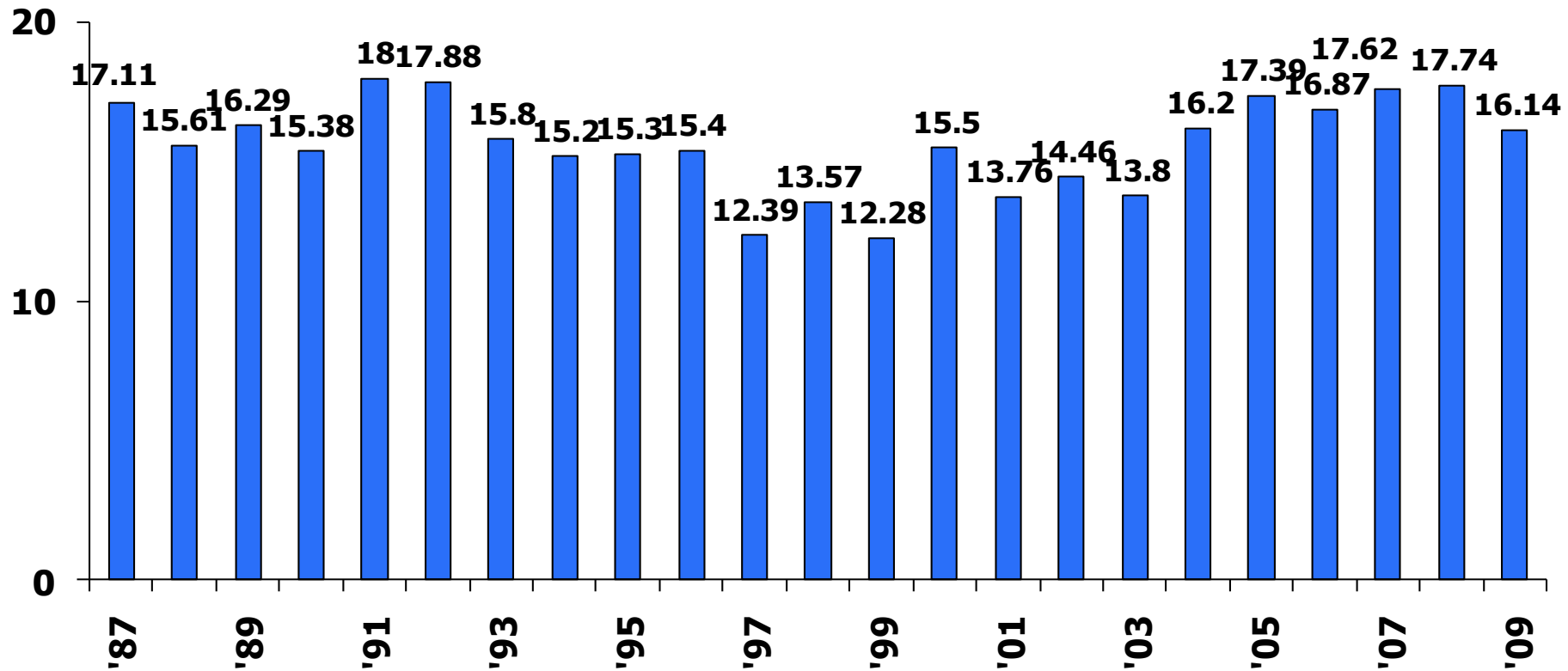
# AVERAGE MEMBERSHIP TURN OVER



\*Newly funded Centers' members are not counted as Members Added

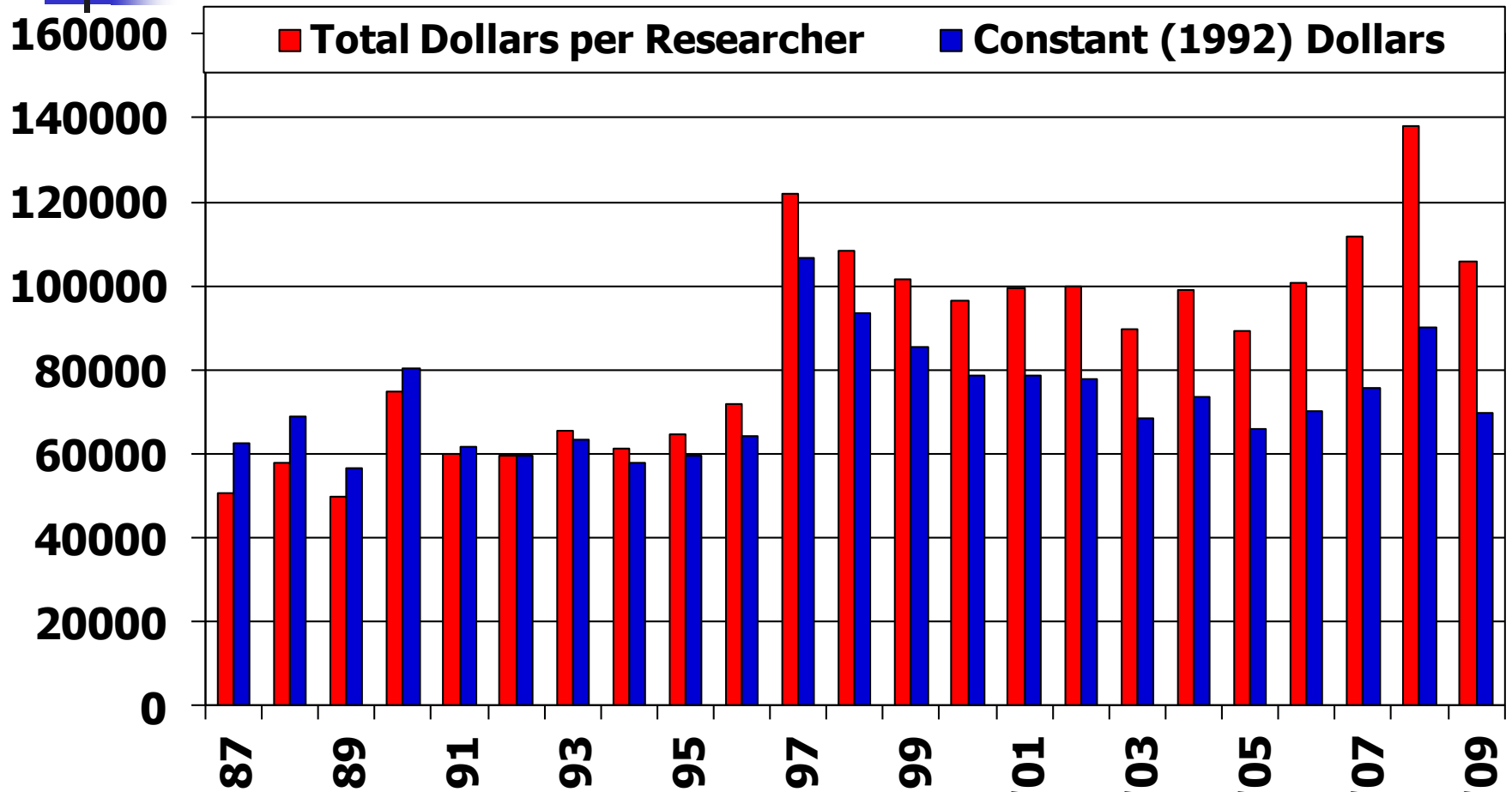
# AVERAGE NUMBER OF RESEARCHERS PER CENTER / BY YEAR

## FACULTY & POST DOC RESEARCHERS



*Note: As of 2003, NSF changed the label of "non-faculty" researchers to "post doc" researchers*

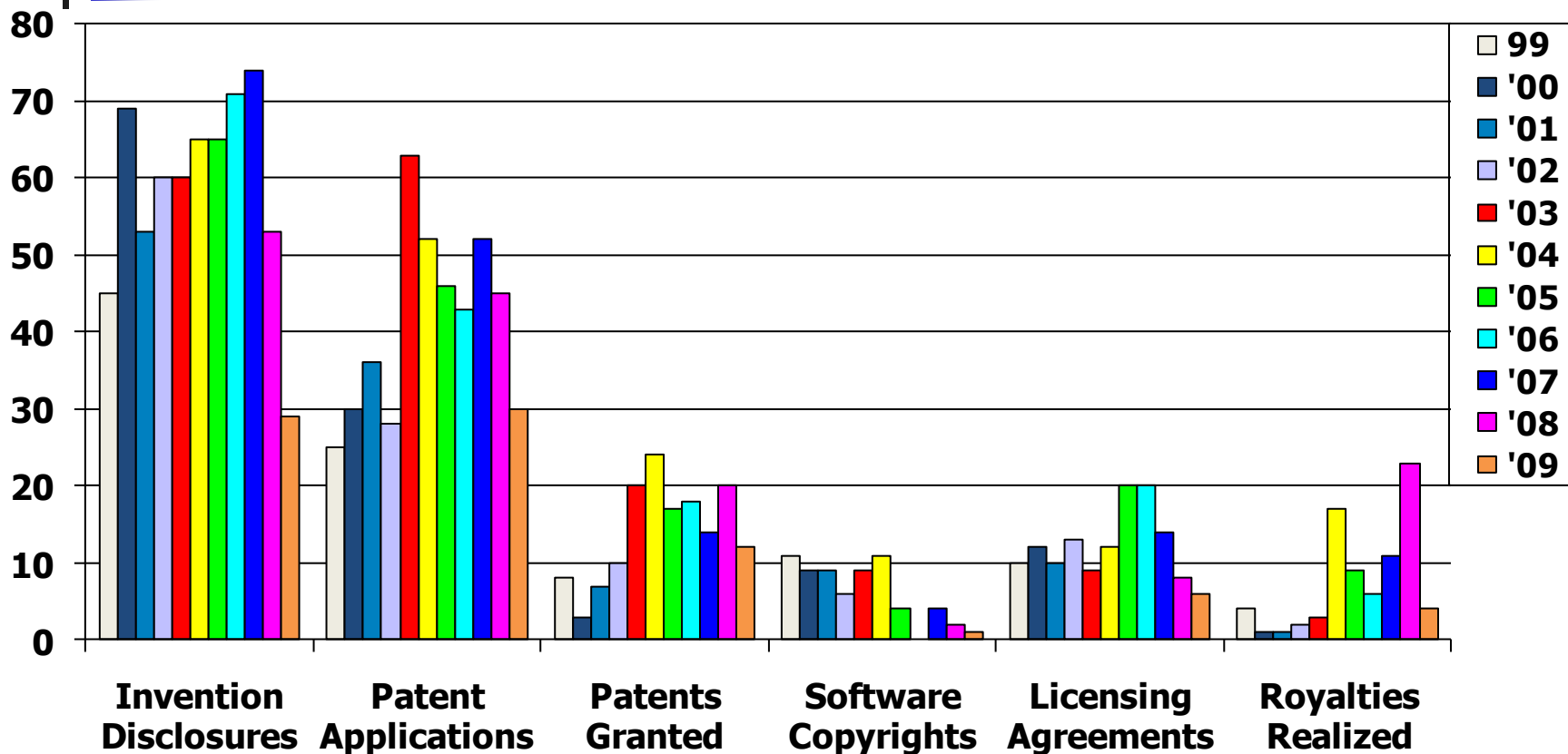
# FUNDING PER RESEARCHER TOTAL vs. CONSTANT DOLLARS



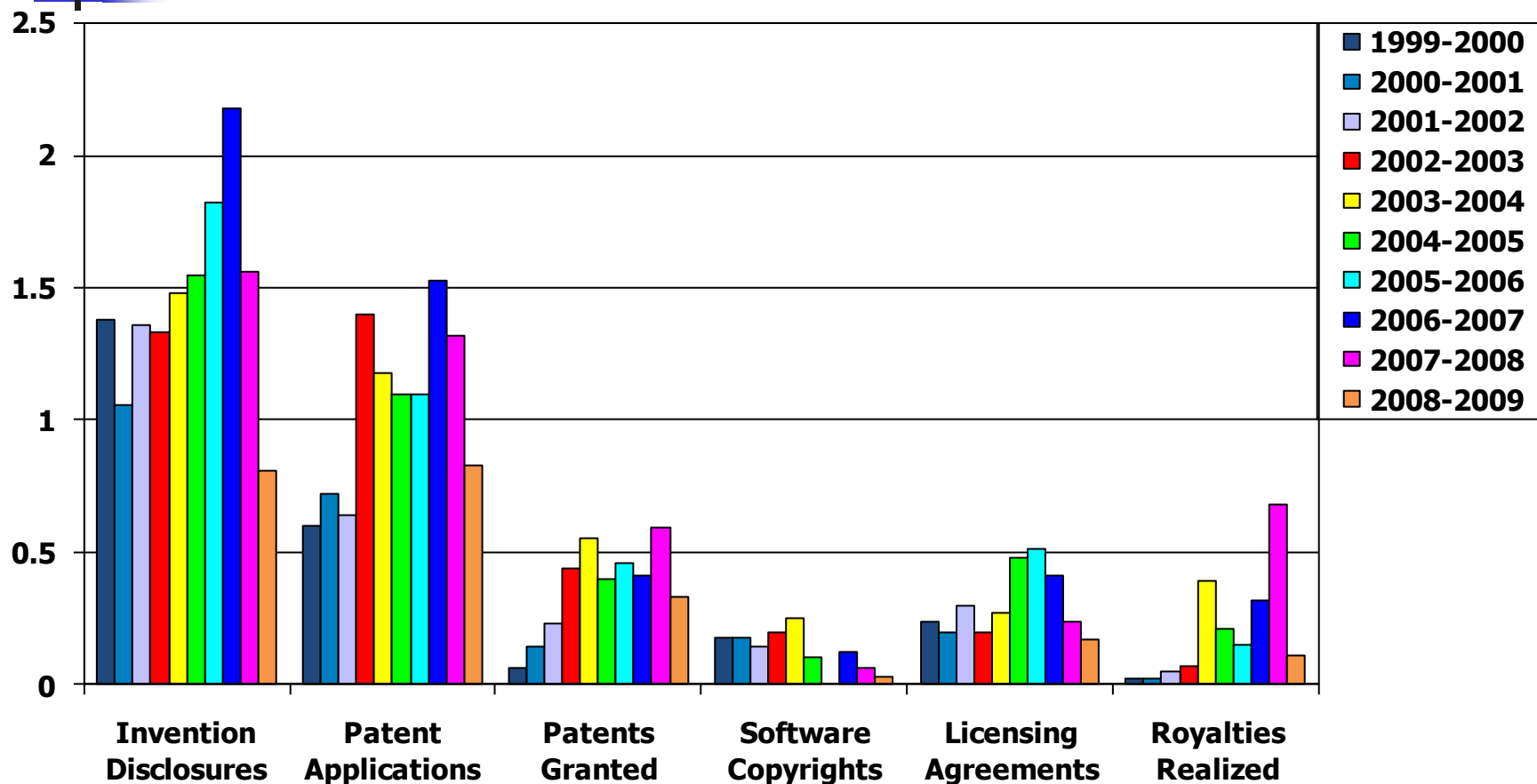
Note: 1992 dollars calculated at: <http://www.minneapolisfed.org/>



# INTELLECTUAL PROPERTY EVENTS FY 98-08 TOTALS



# AVERAGE NUMBER OF INTELLECTUAL PROPERTY EVENTS





# Overview

---

- Program is healthy and continues to add new centers
- ARRA gave a one year boost
- Movement toward multi-site centers continues
  - More NSF money per center but about same per site
- Graduation of some very large older centers has resulted in a steep decline in total funding and leveraging
  - Phase 3 funding may alter this next year
- Economy is hurting recruiting efforts and many centers are experiencing a net loss of members
  - Past history indicates centers bounce back after 2-3 years