

Meeting the Challenges of Multi-University Centers: *An Operations Perspective*

Linda Caudill
Managing Director

Wood-Based Composites Center (WBC)
Phase I, Two-Site Center

I/UCRC Annual Meeting
January 10, 2013

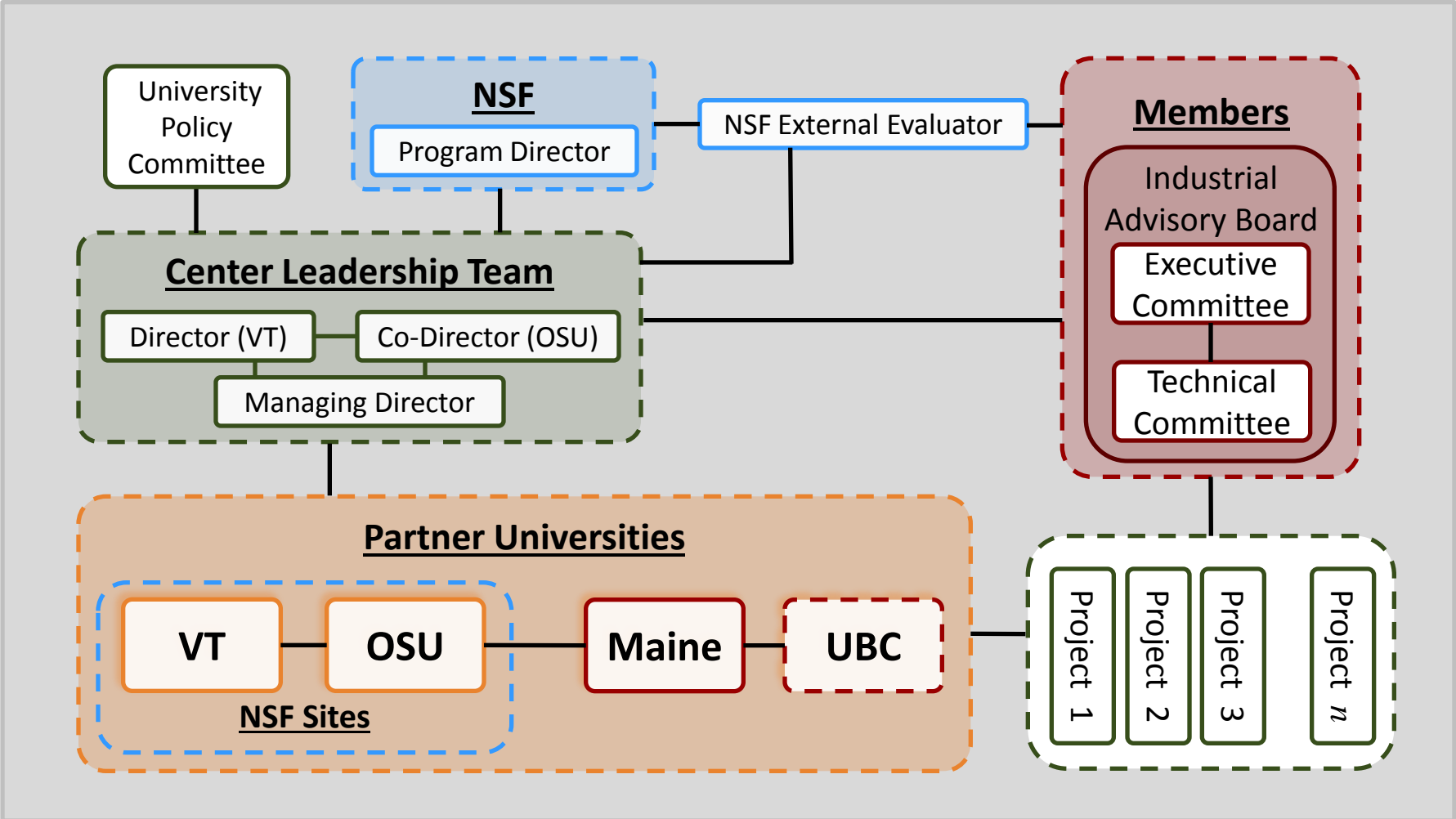


- Membership: 10 members representing:
 - Adhesive and additive suppliers to wbc industry
 - Manufacturers of wbc products
 - Government agencies (U.S., Australia)
 - European-based research laboratory
- Prior to the housing market collapse 18 members, evenly distributed between manufacturers and suppliers. Today, the majority are chemical producers.

Mission

*Advance the science and technology of
wood-based composite materials*

WBC Organizational Structure



Evolution of the Center

- Established: 1999
- I/UCRC Panning Grant Awarded: 2009
- I/UCRC Center Awarded: 2010
- Two NSF Sites and Two Partner Universities
- No new Sites added

Novel Characteristics/Innovative Management

Novel Characteristics:

- Two Partner Universities (not Sites); subcontracted for research
- Each Site subcontracts to only one Partner University
- Collaborative recruiting efforts include Directors, members and partner universities
- In all WBC activities, a member's university affiliation is **not** considered

Innovative Management:

- Single Managing Director serves both sites, presents a united front
- All documentation is standardized across four universities
- Lead Site invoices the other for expenses, as necessary

Thank you.

Questions?

