

# Meeting the Challenges of Multi-University Centers

Krishna Kavi

Director

## Net-Centric Software and Systems (NCSS) Phase I, Four-Site Center



*I/UCRC Annual Meeting*

*January 10, 2013*



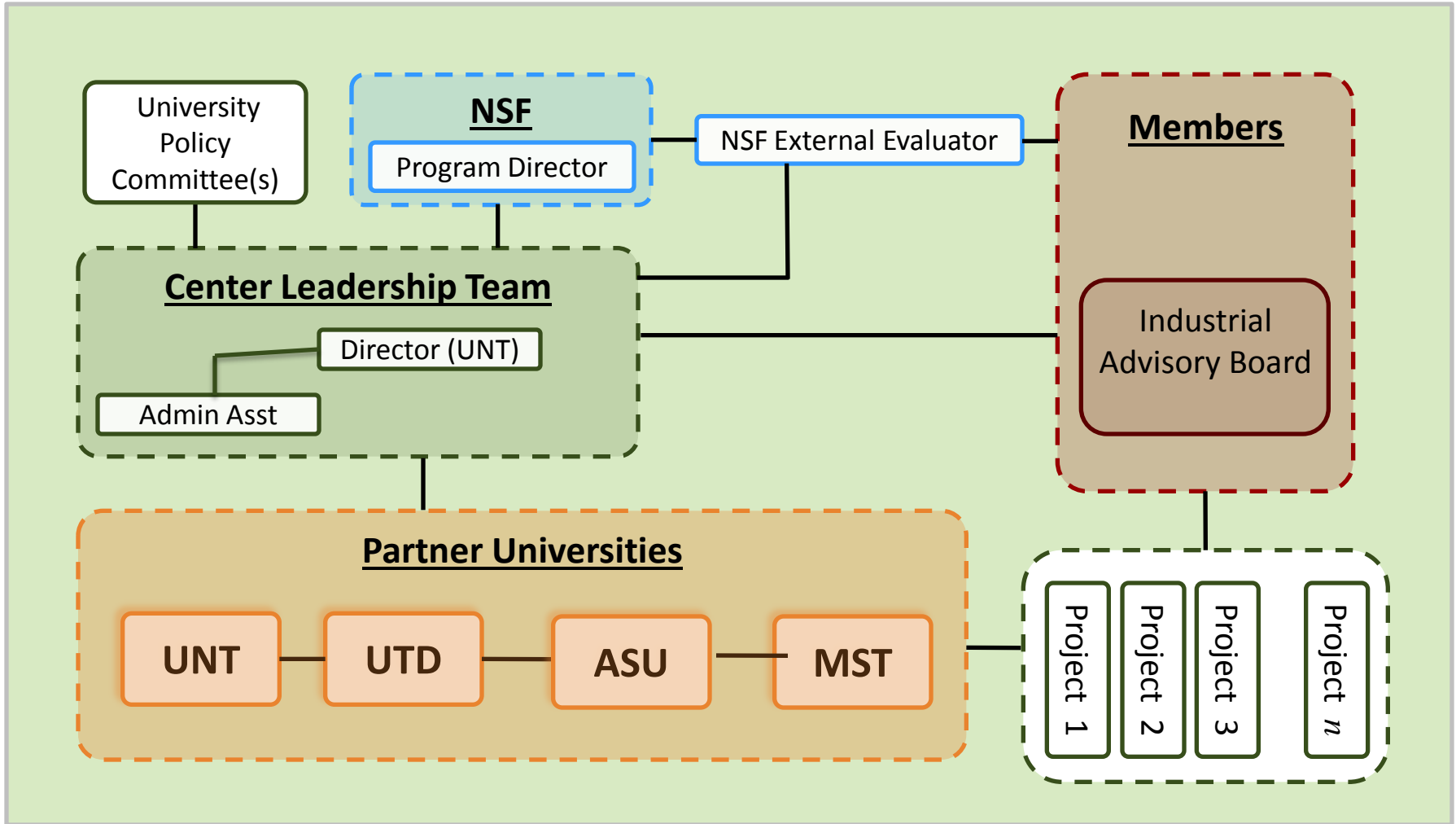
- Membership: Approximately 20 members representing
  - Defense and aerospace industries
  - Electronics and computer systems manufacturers
  - Software developers
  - Healthcare application developers
  - Cloud infrastructure and software service developers
  - Governmental agencies

**Many multiple memberships**

## Mission

*Advance research and development of Net-centric and Cloud based computing environments*

# WBC Organizational Structure



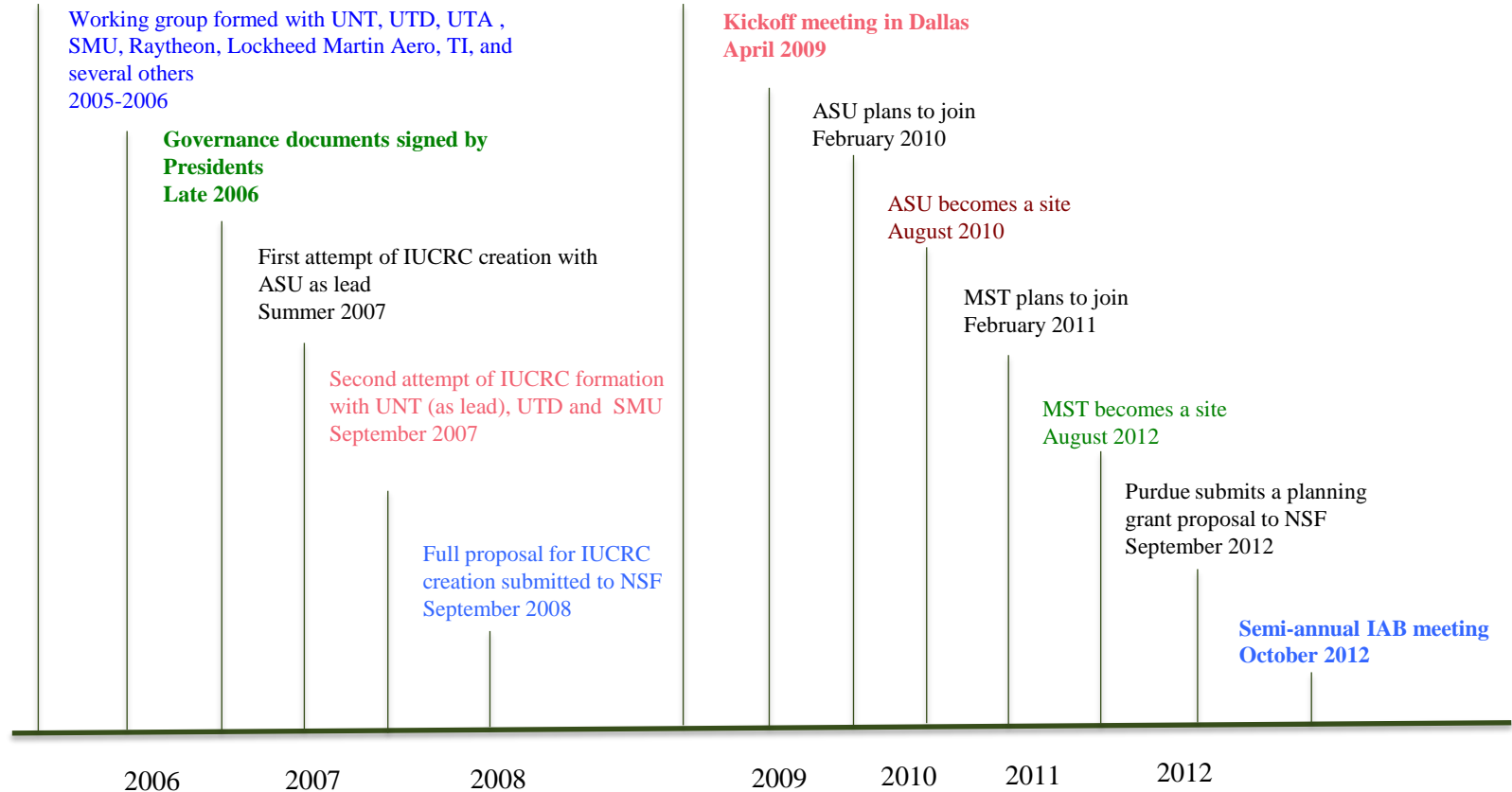
# *Evolution of the Center*

- Explored creation of a DFW area consortium
  - Developed agreements among DFW universities for collaboration
  - IUCRC was suggested as a model for the consortium
- I/UCRC Panning Grant: 2008
- I/UCRC status: 2009
- Originally Two NSF Sites (UNT, UTD) and one Partner University (SMU)
- Two new sites added (ASU-2010; MST 2012)
- Another site in planning stages (Purdue)
- Phase II for original sites in 2014

# Evolution of the Center

Ray Paul encourages DFW universities to form a research consortium  
Summer 2005

**NSF Net-Centric IUCRC approved with UNT as lead, UTD as a site and SMU as an affiliated site  
February 2009**



# Accomplishments By Numbers

Combined totals for all sites since 2009 (not including MST)

Total Industrial Memberships raised	\$1,660,000
Other funds leveraged	\$2,363,000
Total publications	37
Patents filed or received	3
Total number of students that participated	67
Number of underrepresented students involved	8
Total number of graduates	35
Graduates employed by member companies	13
Total number of faculty involved	19
Number of women faculty involved	5

# Novel Characteristics/Innovative Management

## Novel Characteristics:

- Original sites have strong collaborative agreements in place for sharing and transferring funds among the sites
  - Original industrial members viewed the organization as collaborative
  - This became more difficult with additional (geographically distant) sites
- Original university administrators waived indirect cost on memberships, provided the funds are used to support graduate students
  - One membership = one graduate student for approximately 1 year
- *Collaborative recruiting efforts include Directors, members and partner universities*

## Innovative Management:

- Single web-site for all documents and project reports
- All documentation is standardized across four universities
- Bi-monthly meetings for progress reporting and planning

# *New Ideas For Collaboration*

## **Ideas for collaborative projects**

- Industrial members vote on more than one project
  - With strong preference for one
- Each site contributes funds to a pool
  - Pooled funds will support a competitive research project from any university site
- Multiple sites propose (larger) joint project
  - Supported by members from the different sites
- Not yet implemented but hope to do so starting in 2013



**Thank you.**

**Questions?**