



Power Systems Engineering Research Center

(www.pserc.org)

**Empowering minds to engineer
the future electric energy system**

**A National Science Foundation
Industry-University Cooperative Research Center**

Our core purpose:

Empowering minds to engineer
the future electric energy system

What is important to us:

Pursuing, discovering
and transferring knowledge

Producing highly qualified
and trained engineers

Collaborating in all we do

What we're working toward:

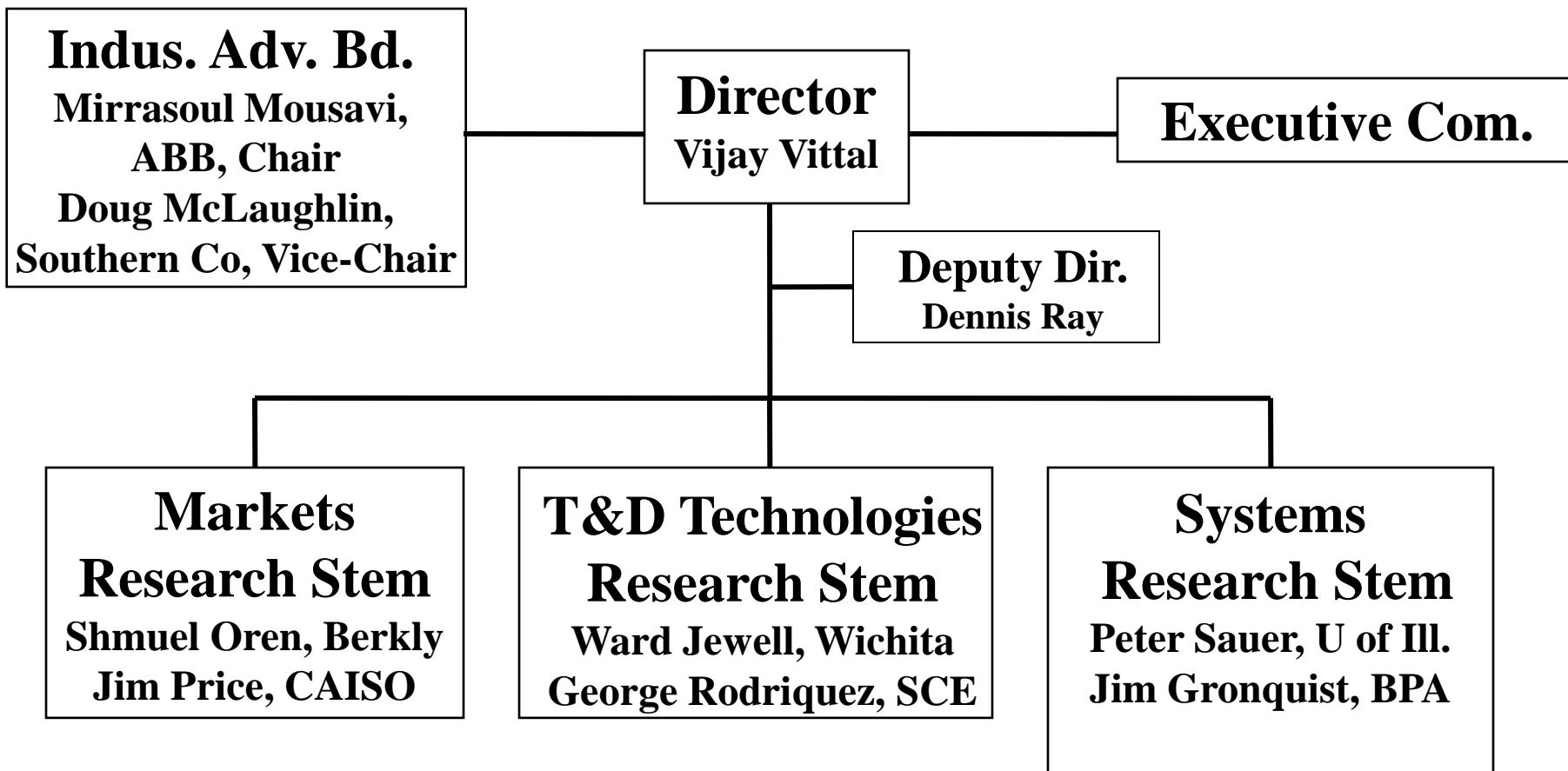
An efficient, secure, resilient, adaptable, and economic electric power infrastructure serving society

A new generation of educated technical professionals in electric power

Knowledgeable decision-makers on critical energy policy issues

Sustained, quality university programs in electric power engineering

Our Organization



Collaborating Universities



- **Arizona State University** - Gerald Heydt
- **University of California at Berkeley** - Shmuel Oren
- **Carnegie Mellon University** - Marija Ilic
- **Colorado School of Mines** - P.K. Sen
- **Cornell University** - Lang Tong
- **Georgia Institute of Technology** - Sakis Meliopoulos
- **Howard University** - James Momoh
- **University of Illinois at Urbana** - Peter Sauer
- **Iowa State University** - Venkataramana Ajjarapu
- **Texas A&M University** - Mladen Kezunovic
- **Washington State University** - Anjan Bose
- **University of Wisconsin-Madison** - Chris DeMarco
- **Wichita State University** - Ward Jewell

Industry Members



ABB

American Electric Power

American Transmission Co.

ALSTOM Grid

Arizona Public Service

BC Hydro

Bonneville Power Admin.

California ISO

CenterPoint Energy

Duke Energy

EPRI

Exelon

GE Energy

FirstEnergy

**Institut de recherche d'Hydro-Québec
(IREQ)**

ISO New England

ITC Holdings

Lawrence Livermore National Lab

Midwest ISO

Mitsubishi Elec. Research Lab

NASA

National Renewable Energy Lab.

National Rural Elec. Coop. Assn.

New York ISO

New York Power Authority

Pacific Gas and Electric

PJM Interconnection

PowerWorld Corp.

RTE (France)

Salt River Project

San Diego Gas & Electric

Southern California Edison

Southern Company

Southwest Power Pool

TVA

Tri-State G&T

U.S. DOE

Western Area Power Admin.

History



- Idea for PSERC began in Aug 1986
- NSF Engineering Research Center proposals – 1994 and 1995
- NSF Industry/University Cooperative Research planning meeting - May 1996
- Established with four schools - Dec 1996
- Added one school - Aug 1998
- Added six more in 1999 - 2000
- Re-organized management in 2000
- Added Executive Director in 2000
- Added two more schools in 2001
- Completed transition to new lead school - Jan 2006
- Became a Phase III I/UCRC - March 2010