

**FLOOR PLAN**  
SCALE: 1/4" = 1'-0"

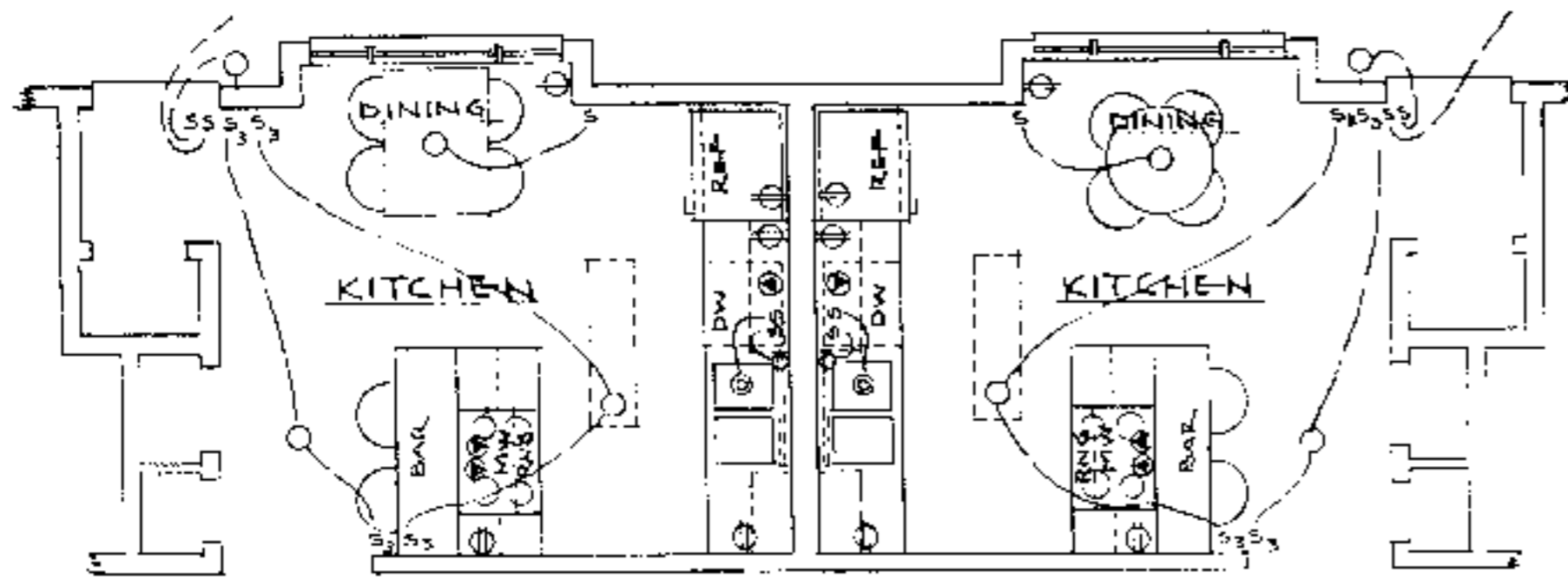
**SUGGESTED ORIENTATION**



Helping people put knowledge to work.

BUILDING DATA (EACH SIDE)	
<b>SQUARE FOOTAGE:</b>	
HEATED	1008
CARPORT, PORCH	321
<b>TOTAL</b>	<b>1329</b>
<b>ESTIMATED HEATING LOAD:</b>	
16,800 BTU/HR @ 60° TD	
<b>ESTIMATED COOLING LOAD</b>	
21,000 BTU/HR = 2 TONS-	

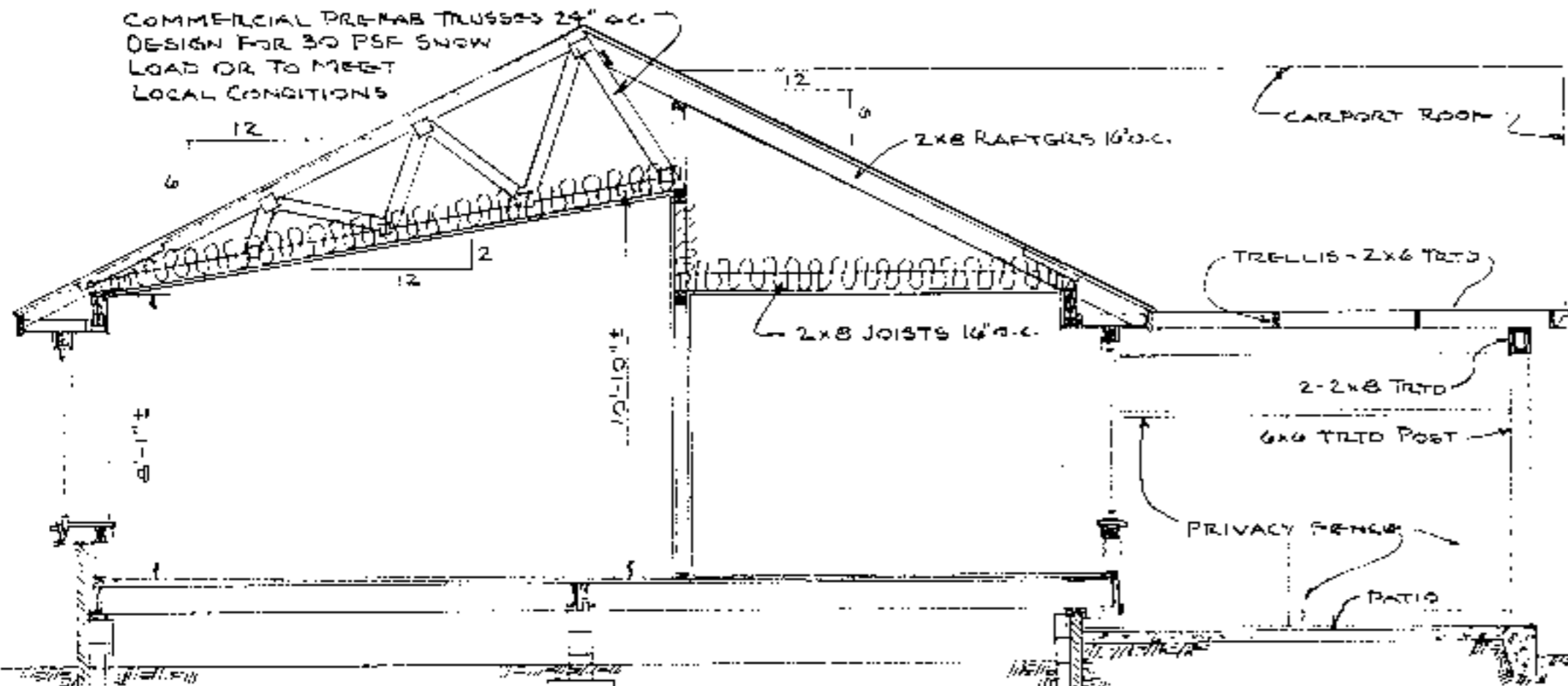
N.C. AGRICULTURAL EXTENSION SERVICE	
HOME ECONOMICS — HOUSING	
N.C. State University, Raleigh, North Carolina	
and	
U.S. Department of Agriculture, Cooperating	
<b>2-BEDROOM DUPLEX</b>	
<b>w/CARPORT</b>	
REV. OF USDA 7264	EA. SIDE 1008 Sq. Ft. HTD.
N.C. 9	86
Sheet	1 of 3



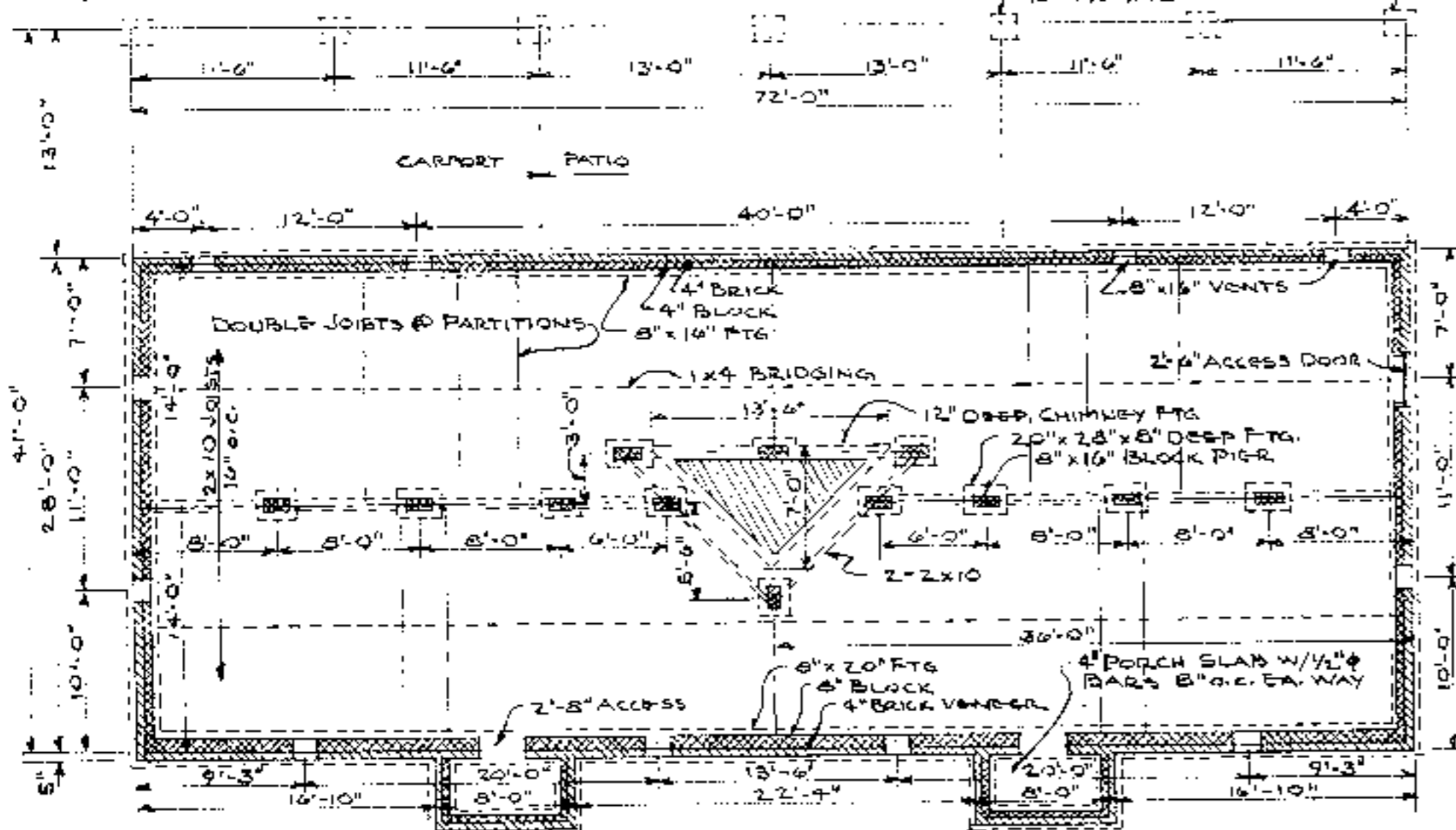
FLOOR PLAN OPTION #1 - KITCHENS

SCALE: 1/8" = 1'-0"

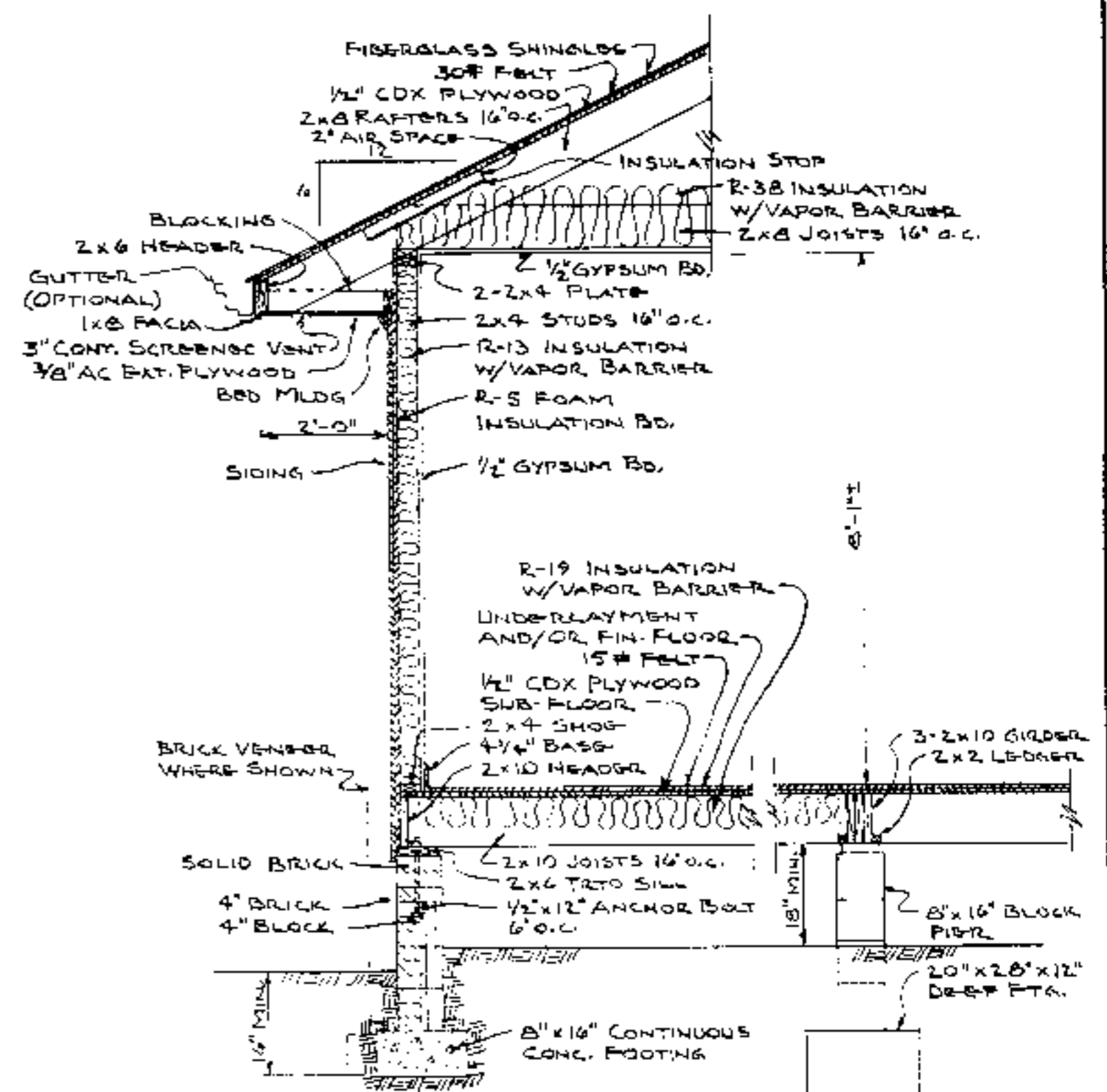
COMMERCIAL PRE-FAB TRUSSES 24" O.C.  
DESIGN FOR 30 PSF SNOW  
LOAD OR TO MEET  
LOCAL CONDITIONS



SECTION "A-A" (GREAT ROOM AREA) - 1/8" = 1'-0"

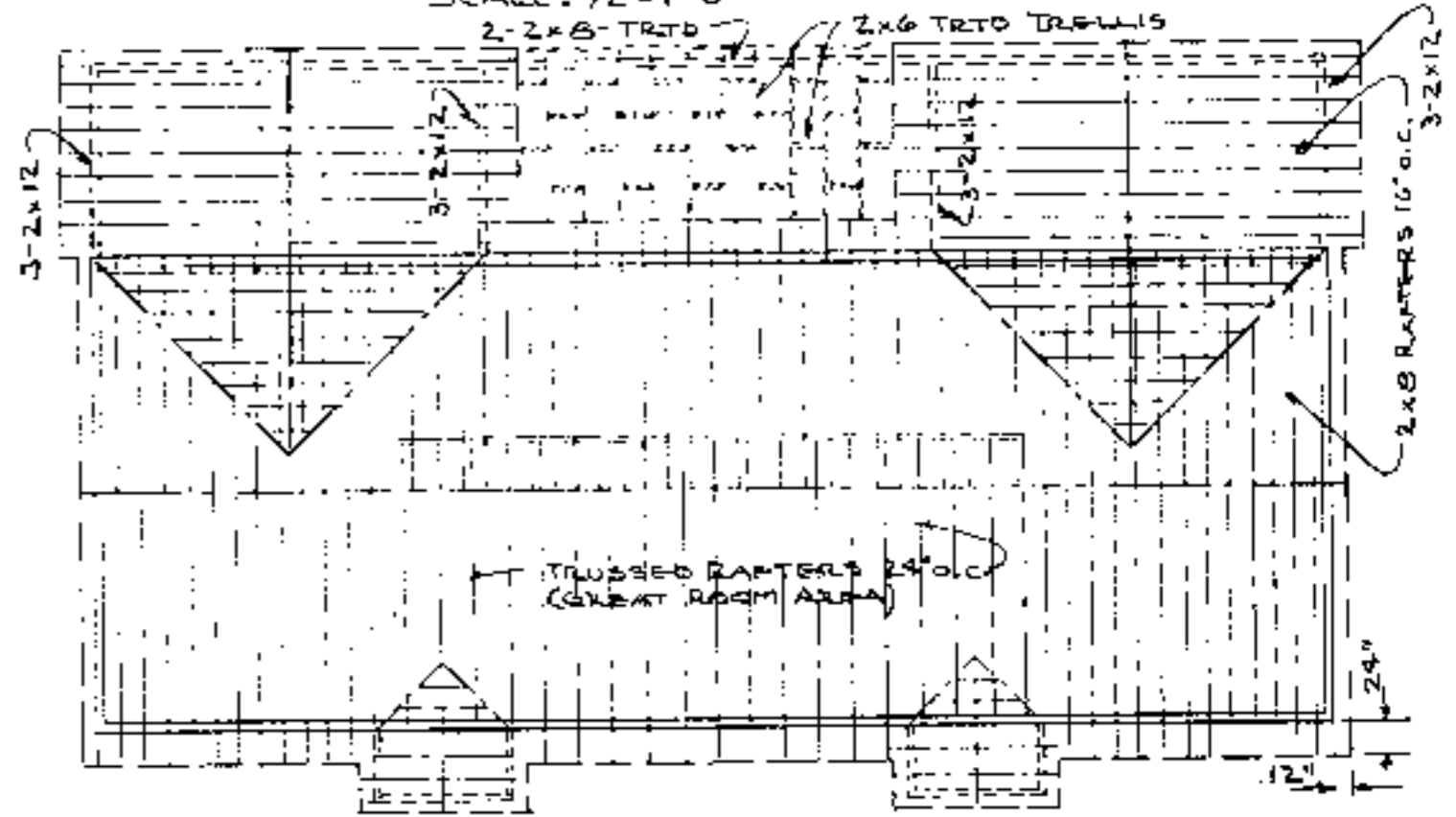


FOUNDATION PLAN - 1/8" = 1'-0"



TYPICAL WALL SECTION

SCALE: 1/2" = 1'-0"



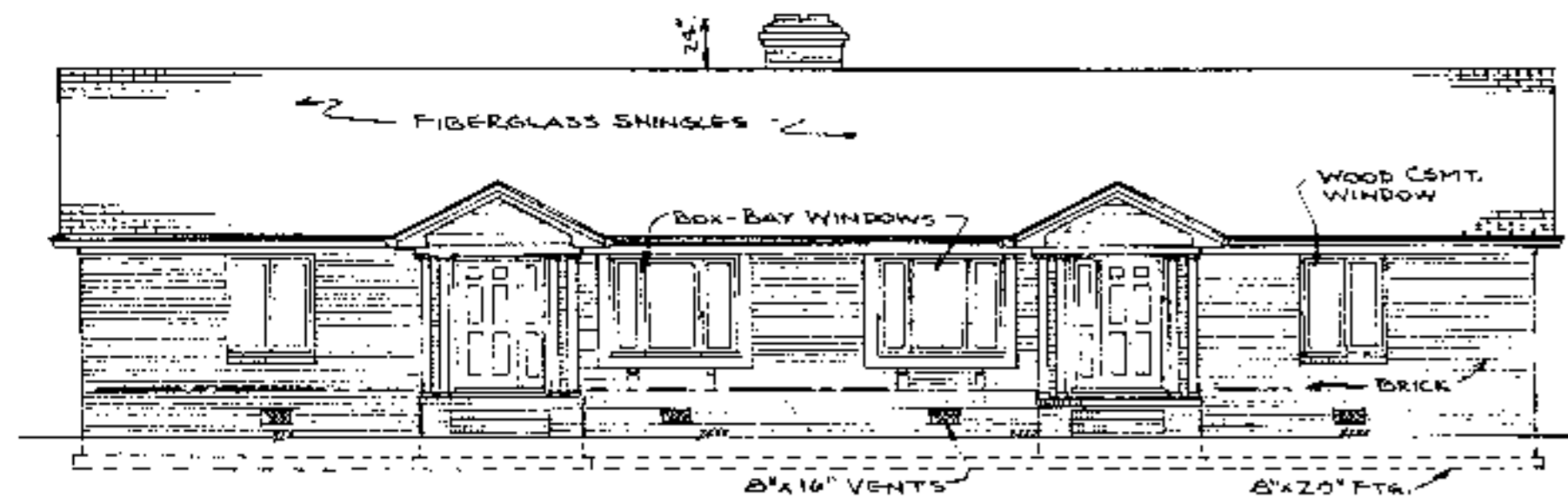
ROOF FRAMING PLAN

NO SCALE

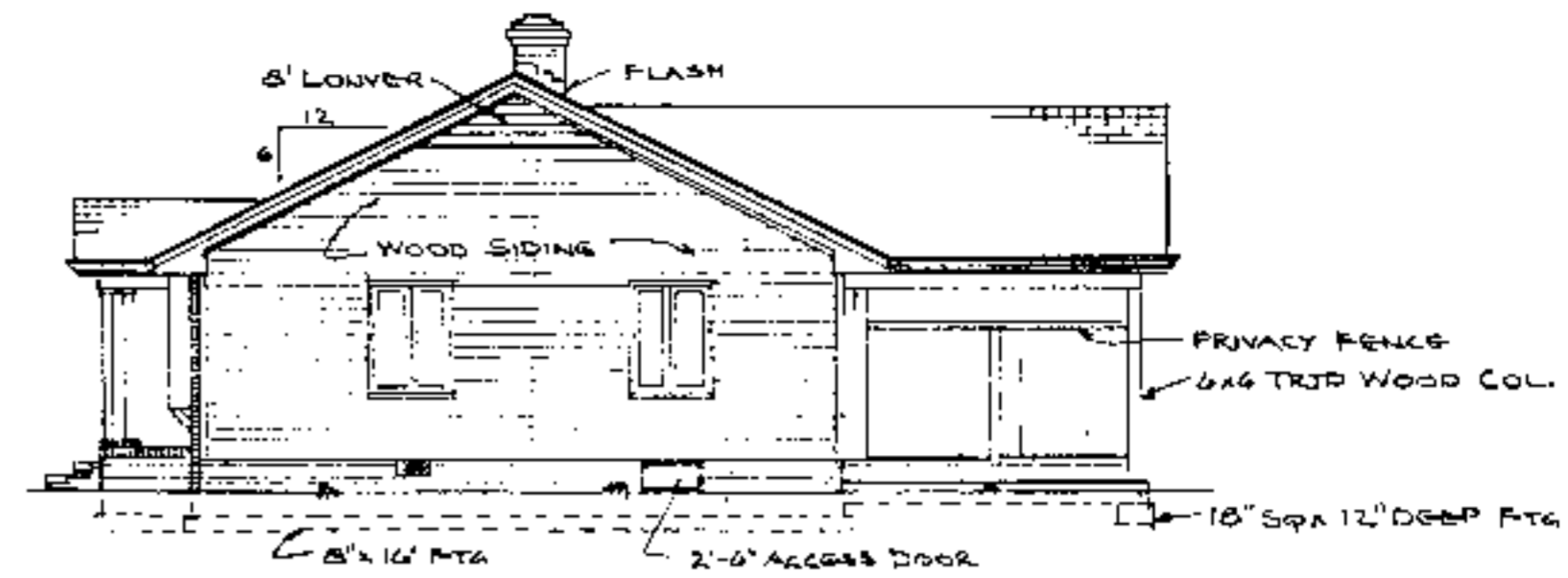


Helping people put knowledge to work

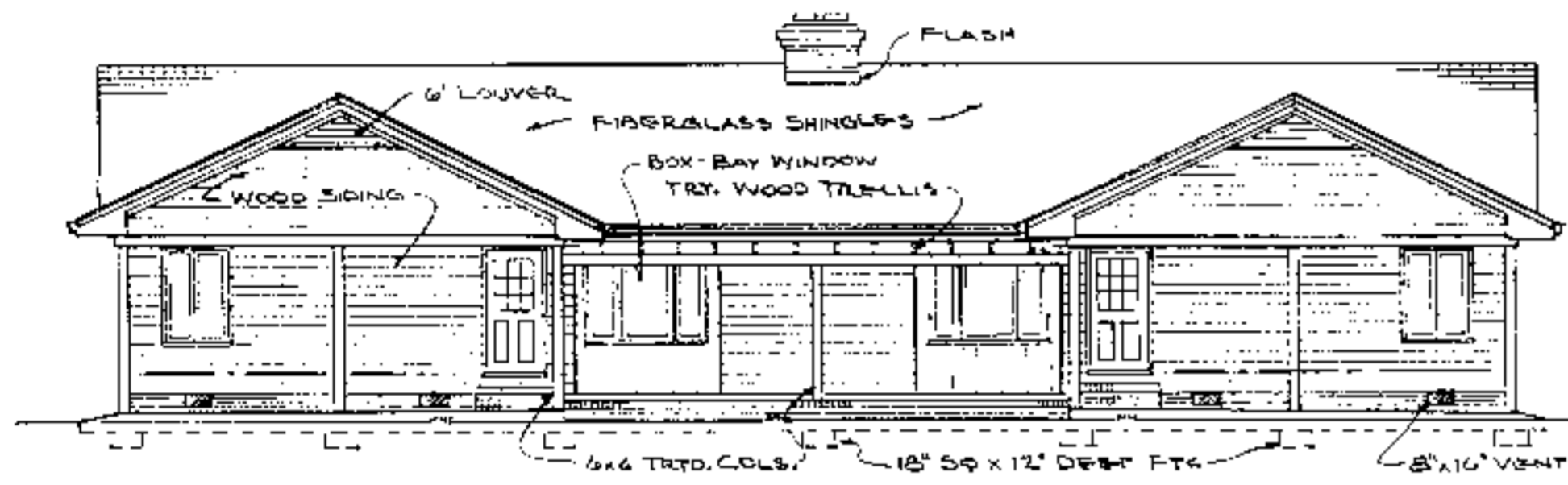
<b>N.C. AGRICULTURAL EXTENSION SERVICE</b> HOME ECONOMICS — HOUSING N.C. State University, Raleigh, North Carolina and U.S. Department of Agriculture, Cooperating	
<b>2-BEDROOM DUPLEX</b> W/CARPORIT	EA. SIDE 1008 Sq. Ft. HTD.
REV. OF USDA 7264	N.C. 9 '85 Sheet 2 of 3



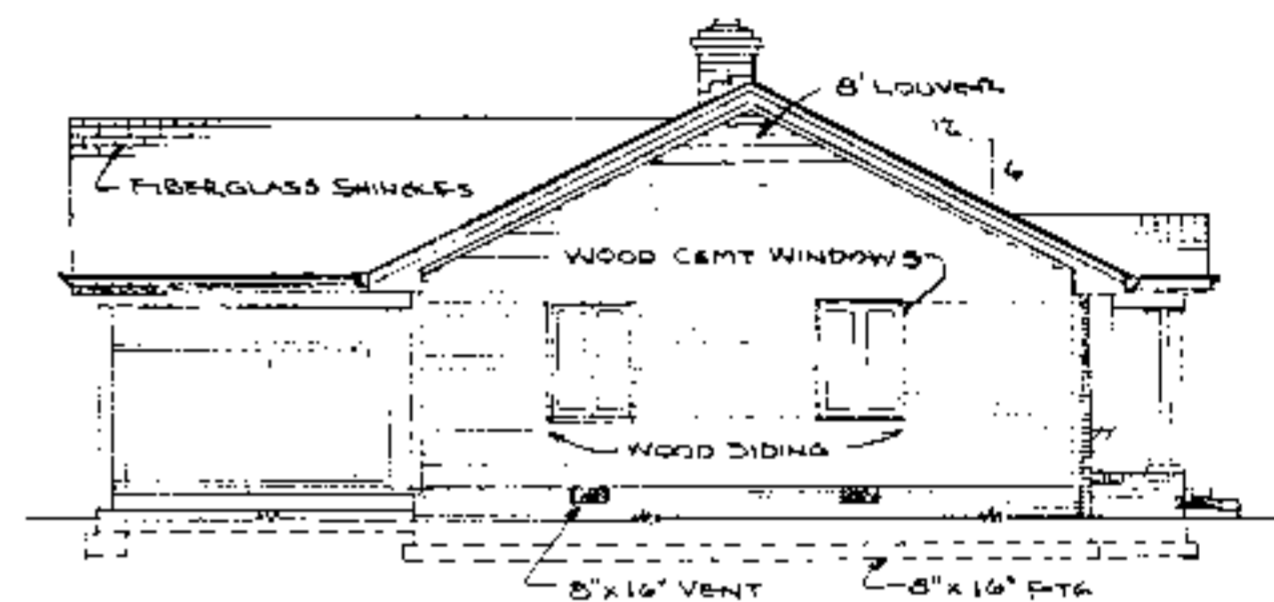
**FRONT ELEVATION**  
SCALE: 1/8" = 1'-0"



**RIGHT SIDE ELEVATION**  
SCALE: 1/8" = 1'-0"



**REAR ELEVATION**  
SCALE: 1/8" = 1'-0"



**LEFT SIDE ELEVATION**  
SCALE: 1/8" = 1'-0"

**CONSTRUCTION CHECKLIST**

- 1- CONSULT LOCAL BUILDING CODES AND LENDING AGENCIES BEFORE BEGINNING CONSTRUCTION (ROOF FRAMING SHOWN IS FOR 30 P.S.F. SNOW LOAD)
- 2- ACTUAL FOOTING SIZE & REINFORCING DEPENDS ON LOCAL SOIL CONDITIONS.
- 3- ADEQUATELY NAIL & ANCHOR JOINTS.
- 4- SHEATH CORNERS WITH 1/2" PLYWOOD OR HIGH DENSITY FIBERBOARD OR USE DIAGONAL BRACING.
- 5- USE EXTERIOR GLUE PLYWOOD WHEREVER IT MAY BE WETTED DURING OR AFTER CONSTRUCTION.
- 6- PRESSURE TREAT ALL WOOD WITH GROUND CONTACT AND PROVIDE OTHER NEEDED TERMITE CONTROL.
- 7- R-VALUES MAY BE ADJUSTED TO LOCAL TEMPERATURES AND FUEL COSTS.
- 8- PROVIDE 1 SQ. FT. MIN OF ATTIC VENT OPENINGS PER 150 SQ. FT. OF CEILING AREA.
- 9- WEATHERIZE ALL OPENINGS & JOINTS.

**ELECTRICAL SYMBOLS**

SYMBOL	DESCRIPTION
S	SINGLE POLE SWITCH
S3	THREE-WAY SWITCH
⊕	DUPLEX OUTLET
⊕ WP	WEATHERPROOF OUTLET
⊕	SPECIAL PURPOSE OUTLET
U	LIGHTING OUTLET
H	WALL BRACKET LIGHT
⊙	COMB. FAN, LIGHT, HEATER
⊞	FLUO. STRIP IN SOFFIT, COVE, CABINET

**DOOR SCHEDULE**

MARK	SIZE	DESCRIPTION	NO. REQ'D
①	32x68	1 1/2" EXT. - INSULATED STEEL W/SIDE LIGHT	2
②	32x68	" " " " " " 1/2 GLASS	2
③	28x68	1 1/8" INT. 6-PANEL COLONIAL	6
④	24x68	" " " " " "	4
⑤	16x68	" " 3-PANEL "	4
⑥	52x68	" " PANEL, BIFOLD	2
⑦	48x68	" " " " " "	4
⑧	28x68	" " " " " "	2



**WINDOW SCHEDULE**

MARK	SIZE	DESCRIPTION	NO. REQ'D
A	62x52	32x52 MIXED W/2-12x52 CMNTS	4
B	42x52	DOUBLE CASHEMENT, WOOD	2
C	32x52	" " " " "	6

ALL WINDOWS SHALL BE NWMA CERTIFIED, WITH DOUBLE GLAZING OR STORM SASH

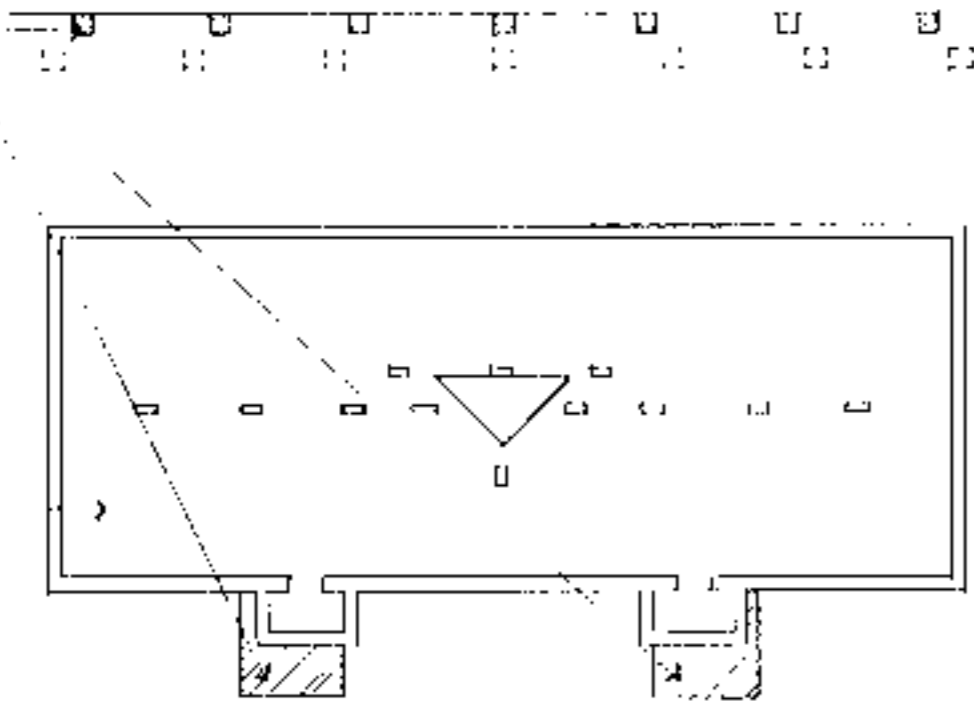
**N.C. AGRICULTURAL EXTENSION SERVICE**  
HOME ECONOMICS — HOUSING  
N.C. State University, Raleigh, North Carolina  
and  
U.S. Department of Agriculture, Cooperating

**2-BEDROOM DUPLEX w/CARPORT**

EA. SIDE 1008 Sq. Ft. HTD.

REV. OF USDA 7264 N.C. 9 '86 Sheet 3 of 3

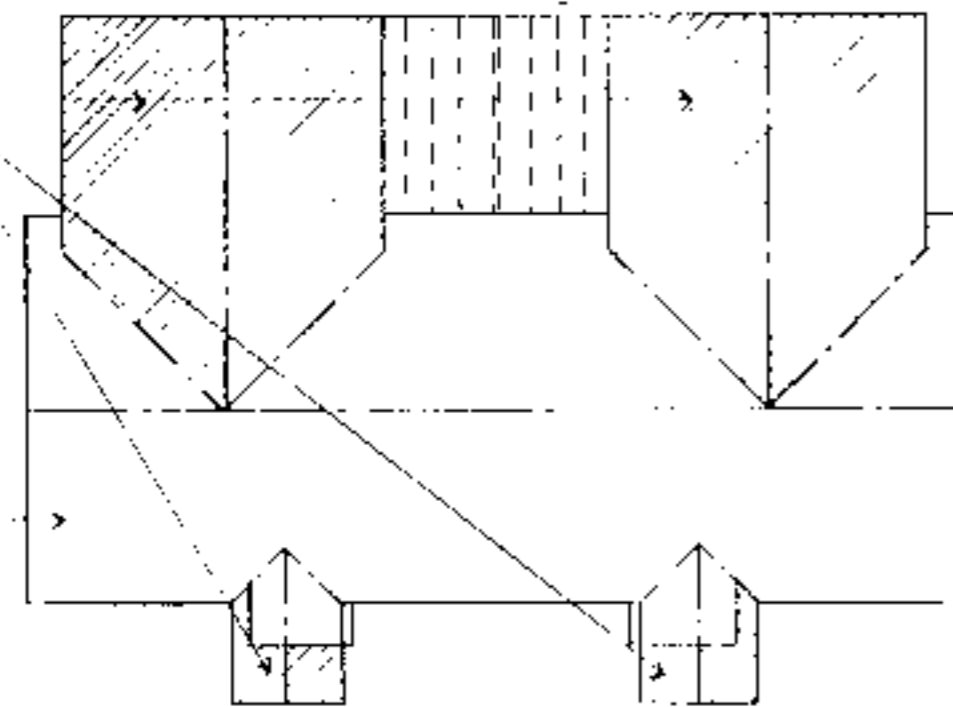
AMENDED ACCESSIBLE FOUNDATION AREA. REVISE AS NECESSARY.



FOUNDATION PLAN. SEE ORIGINAL PLANS FOR DIMENSIONS, NOTES, ETC.

KEY FOUNDATION PLAN  
NO SCALE

AMENDED ACCESSIBLE ROOF AREAS. REVISE AS NECESSARY.



ROOF PLAN. SEE ORIGINAL PLANS FOR DIMENSIONS, NOTES, ETC.

KEY ROOF FRAMING PLAN  
NO SCALE

**INFORMATION**

**Supplemental Accessible House Plan # 9A**

Adapted from and to be used in conjunction with original plan # NC 9

SEE ORIGINAL PLANS FOR ALL WALL SECTIONS, INTERIOR ELEVATIONS, DETAILS, CONSTRUCTION DETAILS, SCHEDULES AND MISCELLANEOUS INFORMATION.

**DISCLAIMER** These plans are supplements to plans offered by the NC Cooperative Extension Service. They are intended to improve access for people with mobility impairments and are provided for information purposes only. It is the responsibility of the contractor and owner to comply with all the applicable federal, state and local codes, ordinances and regulations in the construction of the house. Modifications to these plans will be needed to meet special individual needs of people with disabilities and may also be necessary to comply with specific requirements for energy codes (wind, seismic, snow or other special loading conditions). The set must be used in conjunction with the Extension Service plans and all dimensions, notes and recommended details must be coordinated with the original set and verified in the field by the owner and contractor. For information on product manufacturers contact the Center for Accessible Housing.

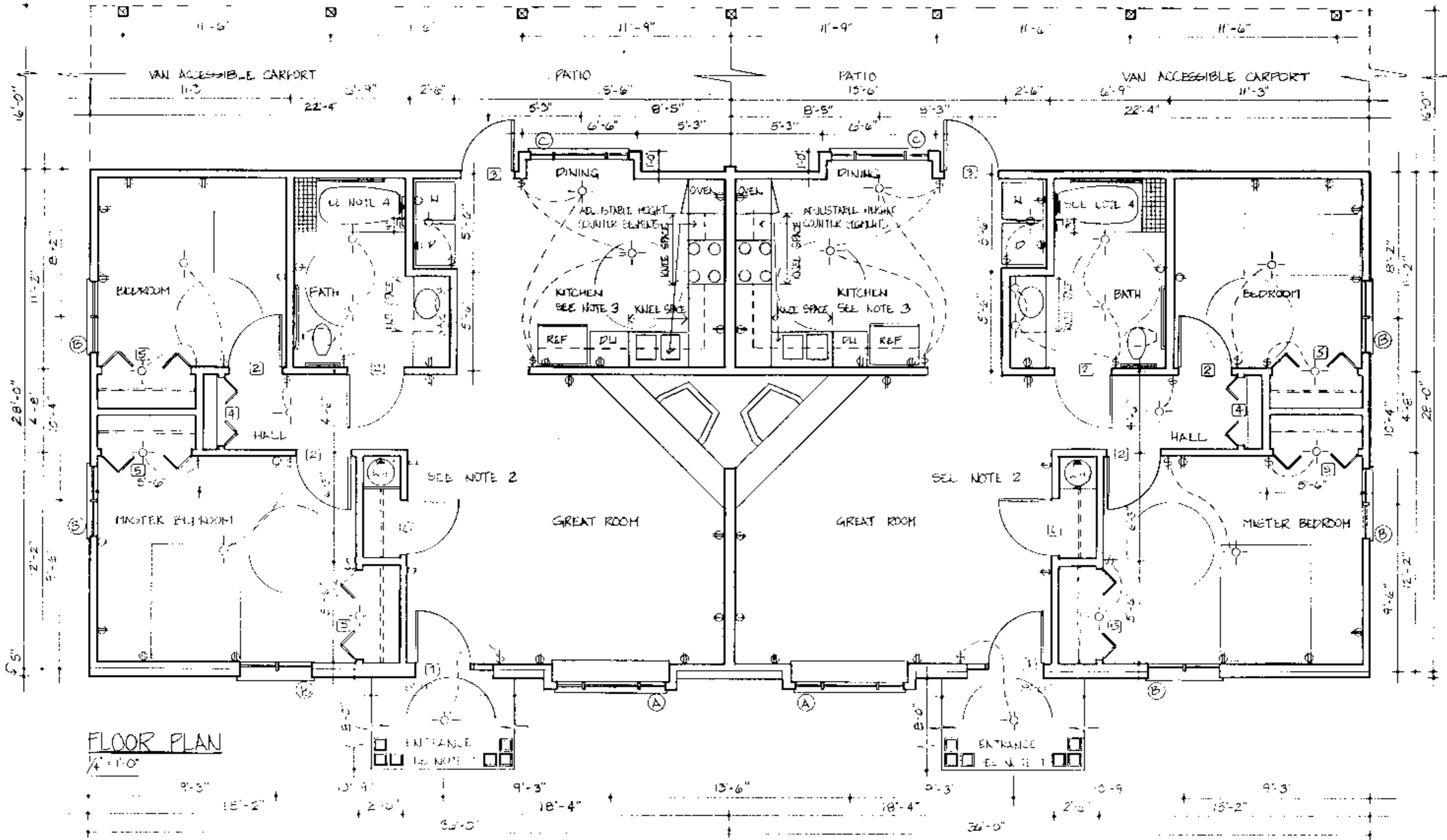
BUILDING DATA	
# Bedrooms	2
Square Footage: heated	1008
storage/porch	368
porch	64
total	1440

**PLAN DATA**  
Adapted by: C. Sanchez  
Drawn by: C. Humkey  
Approved by: R. Moore

Center for Accessible Housing  
School of Design  
NCSU  
Box 8613  
Raleigh, NC 27695-8613  
919.515.3082 voice/TDD  
919.515.3023 fax

Accessible House Plan # 9A  
Adapted from NC Collection Plan # 9  
North Carolina Cooperative Extension Service  
NCSU Home Economics - Housing  
Box 7605  
Raleigh, NC 27695-7605  
US Department of Agriculture, Composting

**PLAN DATA**  
Sheet 1 of 6  
Date May 93



**Note 1. Entrance**

- Viewing window glass or sidelights or high/low peep hole viewer or extreme wide angle lens viewer for security
- Level clear floor area both inside and outside of door to provide maneuvering space at doors
- 36-inch wide doors
- Maximum of 1/4-inch vertical change in level at thresholds and other changes in level
- Lever handle on doors
- 12-inch wide outside shelf for packages

**Note 2. General**

- Electrical receptacles are to be placed at easy to reach height; electrical outlets 18 inches above floor, light switches 38 inches above floor
- Additional electrical outlets in bedrooms to accommodate assistive devices
- Thermostats/controls 44 inches above the floor
- Rocker light switches
- 42-inch clearance in hallways, 32-inch width minimum clear opening width in doorways, 24-inch wide space on latch side of doors on pull side
- Lever handle on doors. Auxiliary handles on doors for ease in closing. Loop type handles 30-36 inches above floor and 6 inches from hinge edge on pull side
- Window sill between 18 and 36 inches above the floor
- Casement windows
- Smooth dense floor coverings for easy maneuvering
- Adjustable height closet rods and storage shelves from 3' 0" to 5' 6"

**Note 3. Kitchen**

- Counter segments elevation can be set at different heights from 30 to 36 inches.
  - Kneespace with pipe protection panel or base cabinets at key locations
  - Front mounted controls on the stove
  - Loop cabinet handles and drawer pulls
  - 5' diameter turning space
  - Lever handle faucet
  - Cabinet doors sliding or spring loaded hinges on cabinet doors
  - Cabinets with full extension pull out shelves
  - Lazy Susans
  - Side-by-side refrigerator/freezer
  - Adaptable removable base cabinets
- See sheet 5 for adjustable sink and counter detail, section at garbage disposal enclosure detail, and counter support bracket detail.

**Note 4. Bathrooms**

- Hand held shower head
  - Lever handle faucets
  - Offset controls in tub/shower
  - Open front lavatory with knee space with protection panel
  - 5' diameter turning space
  - Dual lever faucet controls permit easy manipulation of the flow of water and water temperature.
  - Reinforced walls to accommodate grab bars. Suggested grab bar locations are as required by ANSI. Actual location may need to meet individual needs. Full wall reinforcement, as specified, allows for any position or height to be accommodated.
- See sheets 5 & 6 for section at bathroom counter and sink detail, and typical suggested roll-in shower floor and drain detail at wood frame construction.

**DISCLAIMER** These plans are supplements to plans offered by the NC Cooperative Extension Service. They are intended to provide access for people with mobility impairments and are provided for information purposes only. It is the responsibility of the contractor and owner to comply with all the applicable federal, state and local codes, ordinances and regulations in the construction of the house. Modifications to these plans will be needed to meet special individual needs of people with disabilities and may also be necessary to comply with specific requirements for energy codes, wind, seismic, snow or other special loading conditions. The set must be used in conjunction with the Extension Service plans and any dimensions, notes and recommended details must be in accordance with the original set and verified in the field by the owner and contractor. For information on product manufacturers contact the Center for Accessible Housing.

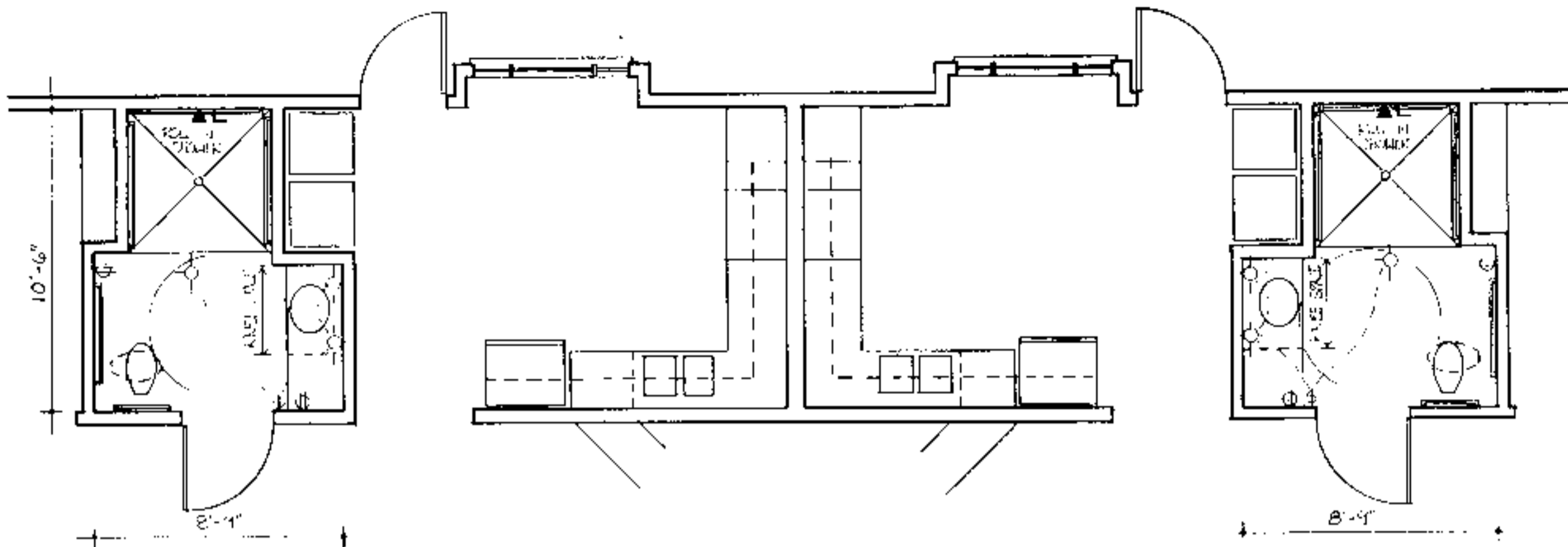
BUILDING DATA	
# Bedrooms	2
Square Footage: heated	1008
storage/carport	368
porch	64
total	1440

**PLAN DATA**  
 Adapted by: C. Sanchez  
 Drawn by: C. Humkey  
 Approved by: R. Mace

**Center for Accessible Housing**  
 School of Design  
 NCSU  
 Box 8613  
 Raleigh, NC 27695-8613  
 919.515.3082 voice/TDD  
 919.515.3023 fax

**Accessible House Plan # 9A**  
 Adapted from NC Collection Plan # 9  
 North Carolina Cooperative Extension Service  
 NCSU Home Economics - Housing  
 Box 7605  
 Raleigh, NC 27695-7605  
 US Department of Agriculture, Cooperating

**PLAN DATA**  
 Sheet 2 of 6  
 Date May 93

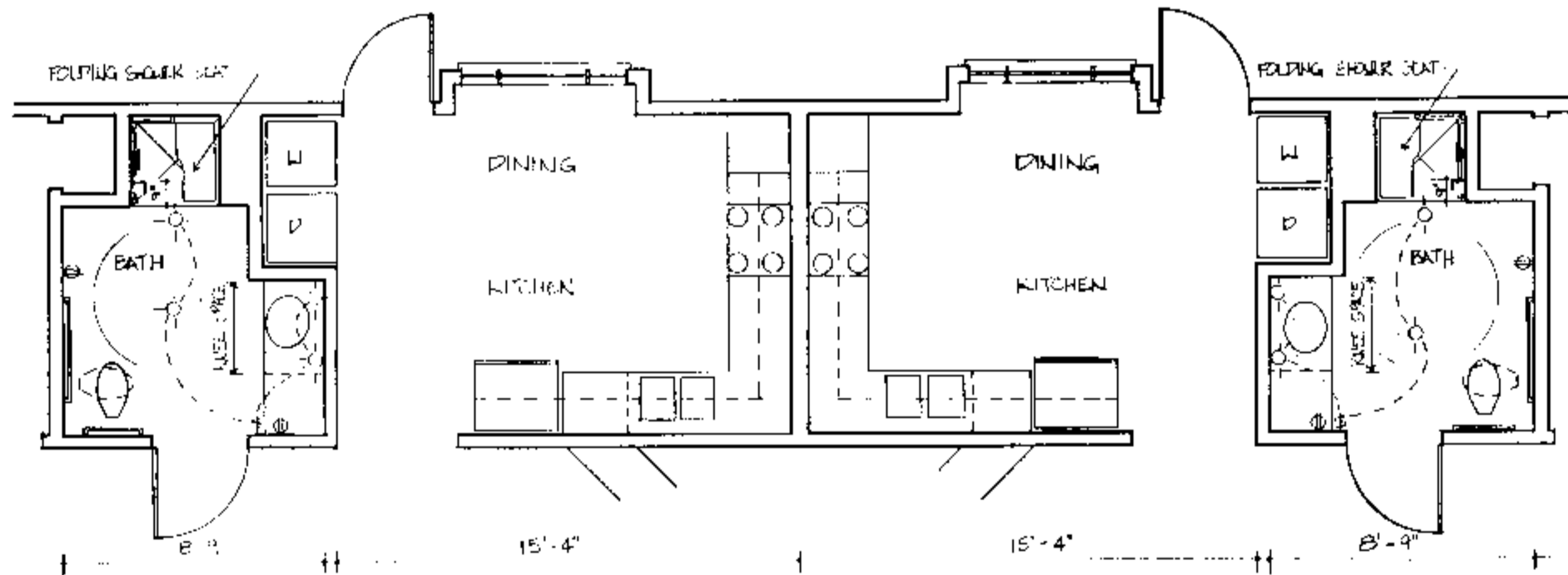


BATHROOM OPTION - 5'5' ROLL IN SHOWER  
 $\frac{1}{4}'' = 1'-0''$

House # 4

Door Schedule			Symbol
Mark	Size	Description	No. Required
1	3'0" x 6'8"	exterior hardwood w/side light	2
2	3'0" x 6'8"	interior hardwood	6
3	3'0" x 6'8"	exterior	2
4	3'6" x 6'8"	interior bifold	2
5	5'0" x 6'8"	interior bifold	6
6	3'0" x 6'8"	int. hardwood (closet)	2

Window Schedule			Symbol
Mark	Size	Description	No. Required
A	6'0" x 5'2"	casement	2
B	4'0" x 5'2"	casement	6
C	5'6" x 5'2"	casement	2



BATHROOM OPTION - 3'3' TRANSFER SHOWER  
 $\frac{1}{4}'' = 1'-0''$

**DISCLAIMER** These plans are supplements to plans offered by the NC Cooperative Extension Service. They are intended to improve access for people with mobility impairments and are provided for information purposes only. It is the responsibility of the contractor and owner to comply with all the applicable federal, state and local codes, ordinances and regulations in the construction of the house. Modifications to these plans will be needed to meet special individual needs of people with disabilities and may also be necessary to comply with specific requirements for energy codes, wind seismic, snow or other special loading conditions. This set must be used in conjunction with the Extension Service plans and all dimensions notes and recommended details must be co-ordinated with the original set and verified in the field by the owner and contractor. For information on product manufacturers contact the Center for Accessible Housing.

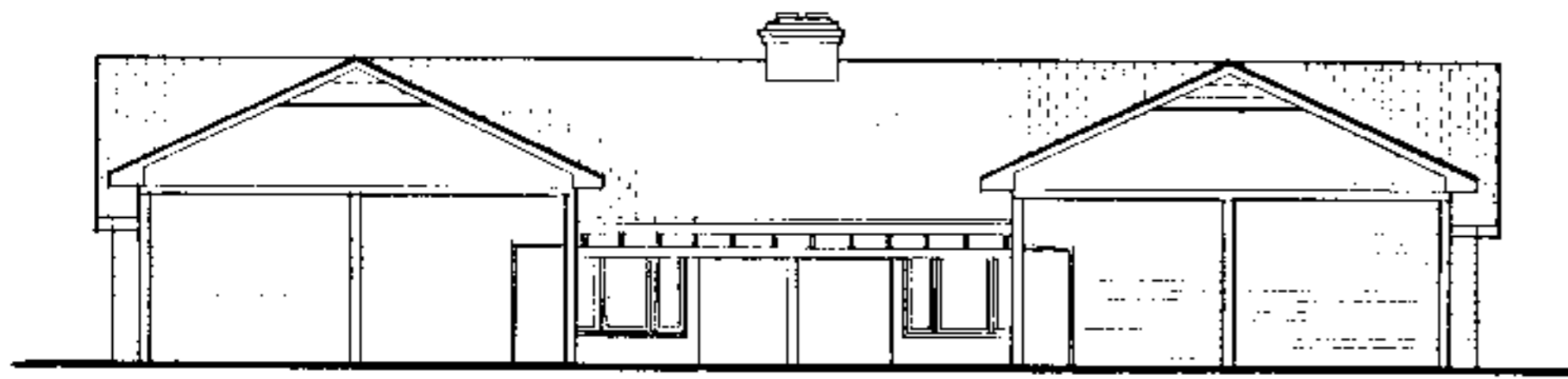
BUILDING DATA	
# Bedrooms	2
Square Footage: heated	1000
storage/porch	368
porch	64
total	1440

**PLAN DATA**  
 Adopted by: C. Sanchez  
 Drawn by: C. Humkey  
 Approved by: R. Mace

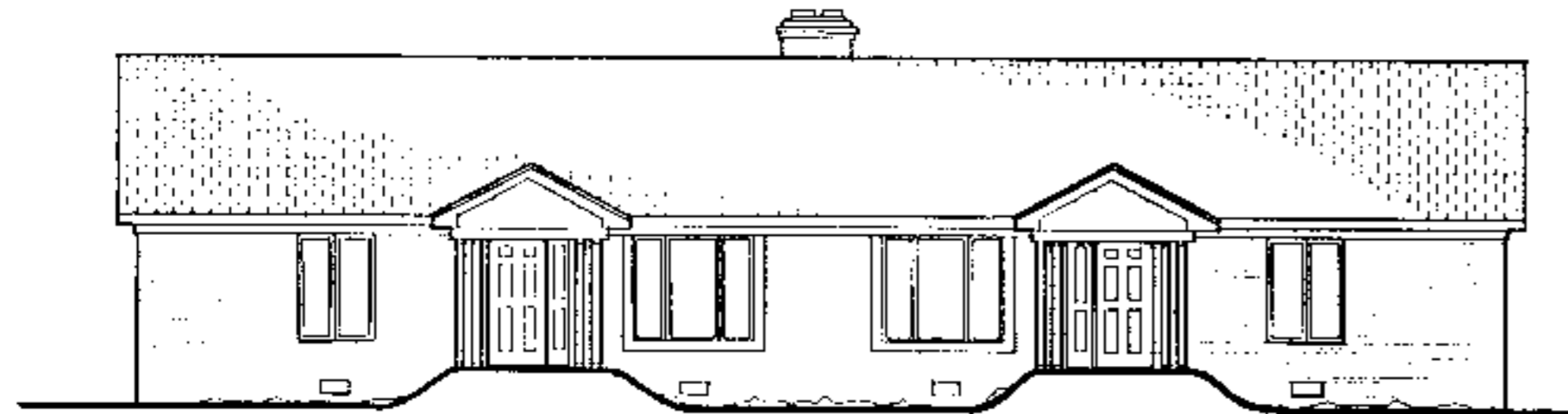
Center for Accessible Housing  
 School of Design  
 NCSU  
 Box 8613  
 Raleigh, NC 27695-8613  
 919.515.3082 voice/TDD  
 919.515.3023 fax

Accessible House Plan # 97A  
 Adopted from NC Collection Plan # 9  
 North Carolina Cooperative Extension Service  
 NCSU Home Economics - Housing  
 Box 7605  
 Raleigh, NC 27695-7605  
 US Department of Agriculture, Commodity

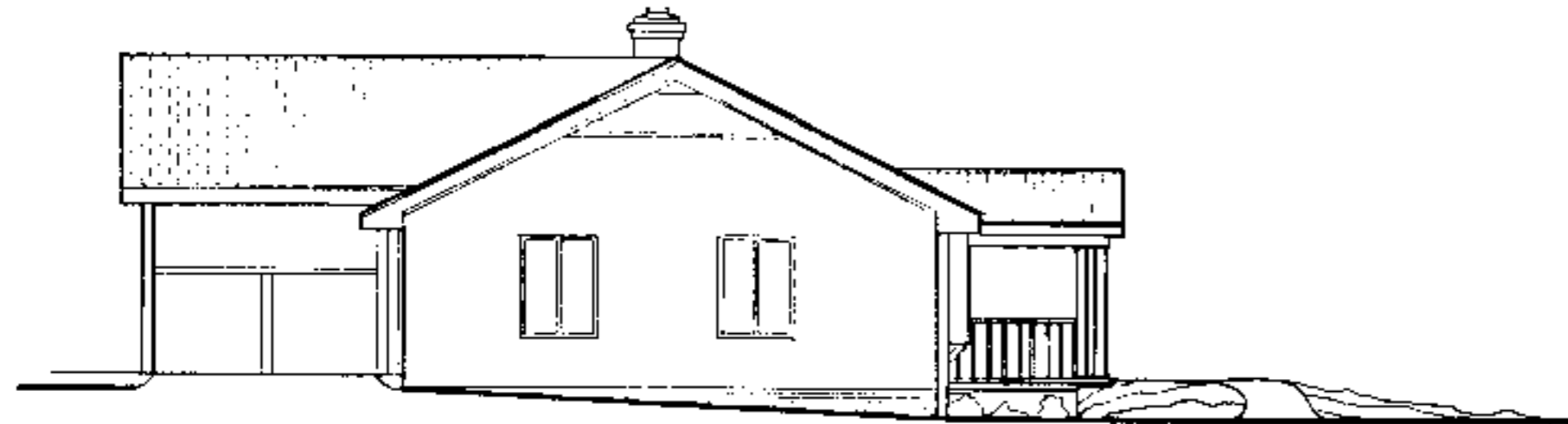
**PLAN DATA**  
 Sheet 3 of 6  
 Date May 92



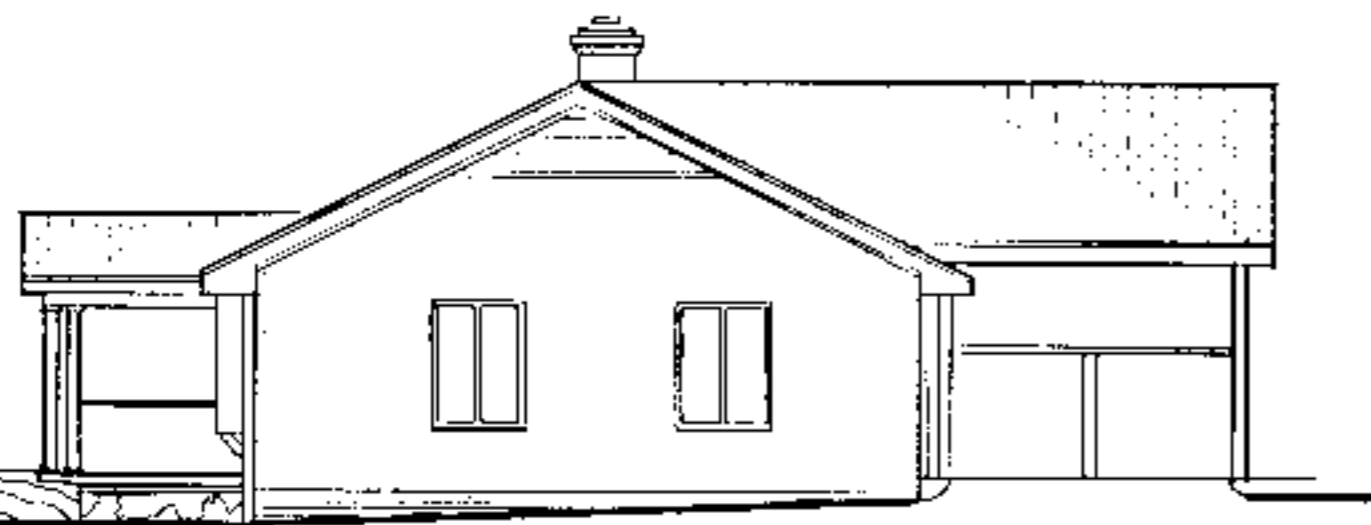
REAR ELEVATION  
1/8" = 1'-0"



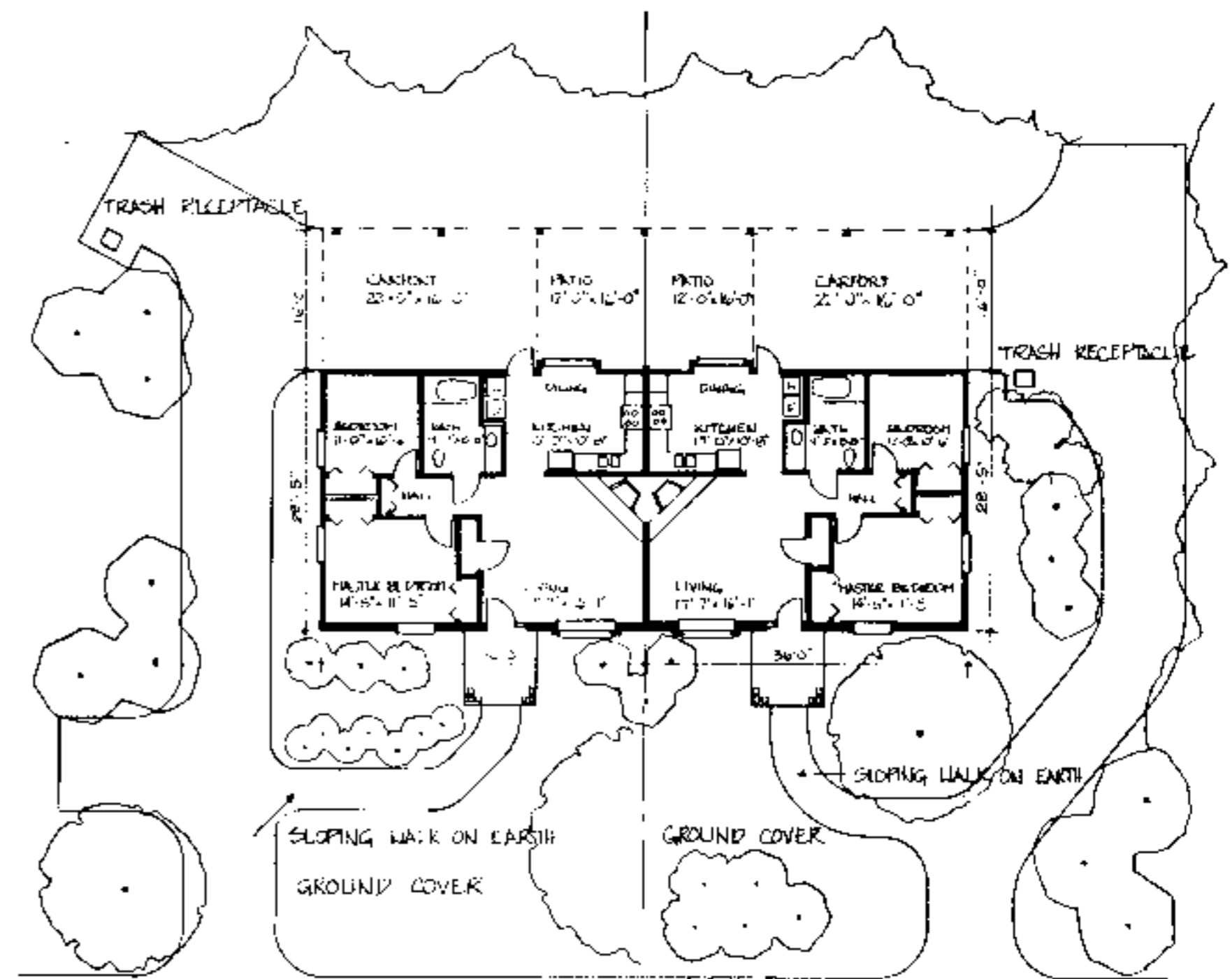
FRONT ELEVATION  
1/8" = 1'-0"



LEFT SIDE ELEVATION  
1/8" = 1'-0"



RIGHT SIDE ELEVATION  
1/8" = 1'-0"



SITE PLAN - OPTION 1  
1" = 15'-0"

SITE PLAN - OPTION 2  
1" = 15'-0"

**Site Plan Notes**

- When siting house and designing exterior walkways, consider topography, existing vegetation, solar orientation, and drainage.
- Eliminate the need for a ramp or limit its length and slope by placing the foundation as close to the ground as possible.
- Create attractive accessible entrances utilizing earthwork and site grading. Short wood framed bridges spanning from the elevated floor of the house to an uphill site location eliminate the need for special drainage, waterproofing and ventilation measures. On flatter sites, the bridge solution is possible by building an earth berm and retaining wall with a sloped walk.
- Locate walkways to provide convenient access to the parking area, house entrances, outside sitting area, mail/newspaper delivery area, and trash/recycling receptacles. Provide 1/2 inch raised edge on the side of walkways to prevent stroller or wheelchairs from rolling off accidentally.
- Create attractive enclosure for trash/recycling containers, that would also prevent them from blowing over or being disturbed by animals.
- Provide raised beds for gardening, on outside entertaining area and a recreational/play area. Locate raised beds/vegetable/flower near walkways, entrances and seating areas to maximize enjoyment, while facilitating ease of maintenance.
- When designing outside features, such as ramps, railings, or raised beds, use similar architectural details, colors, and building materials as in the (exterior) residence.
- Consider minimizing lawn space, or replacing it entirely with ground cover or mulch to reduce maintenance.
- Select plants which are appropriate for the soil and climate, such as indigenous species, to reduce maintenance. Include a variety of species of ground cover, and size and species of shrubbery to improve the ecological balance and wild life habitat.
- Choose plants which will mature at the desired height and provide year-round interest in views both outside and from within the house.
- Use multiseason plants (those with interesting color, textures, fragrance, or edible part) and plants which attract birds and butterflies to maximize landscape enjoyment without increasing maintenance.

**DISCLAIMER** These plans are supplements to plans offered by the NC Cooperative Extension Service. They are intended to improve access for people with mobility impairments and are provided for information purposes only. It is the responsibility of the contractor and owner to comply with all applicable federal, state and local codes, ordinances and regulations in the construction of the house. Modifications to these plans will be needed to meet special individual needs of people with disabilities and may also be necessary to comply with specific requirements for energy codes, wind, seismic, snow or other special loading conditions. This set must be used in conjunction with the Extension Service plans and all other notes and recommended details must be coordinated with the original set and verified in the field by the owner and contractor. For information on product manufacturers contact the Center for Accessible Housing.

BUILDING DATA	
# Bedrooms	2
Square Footage: heated	1000
storage/carpent	368
porch	64
total	1440

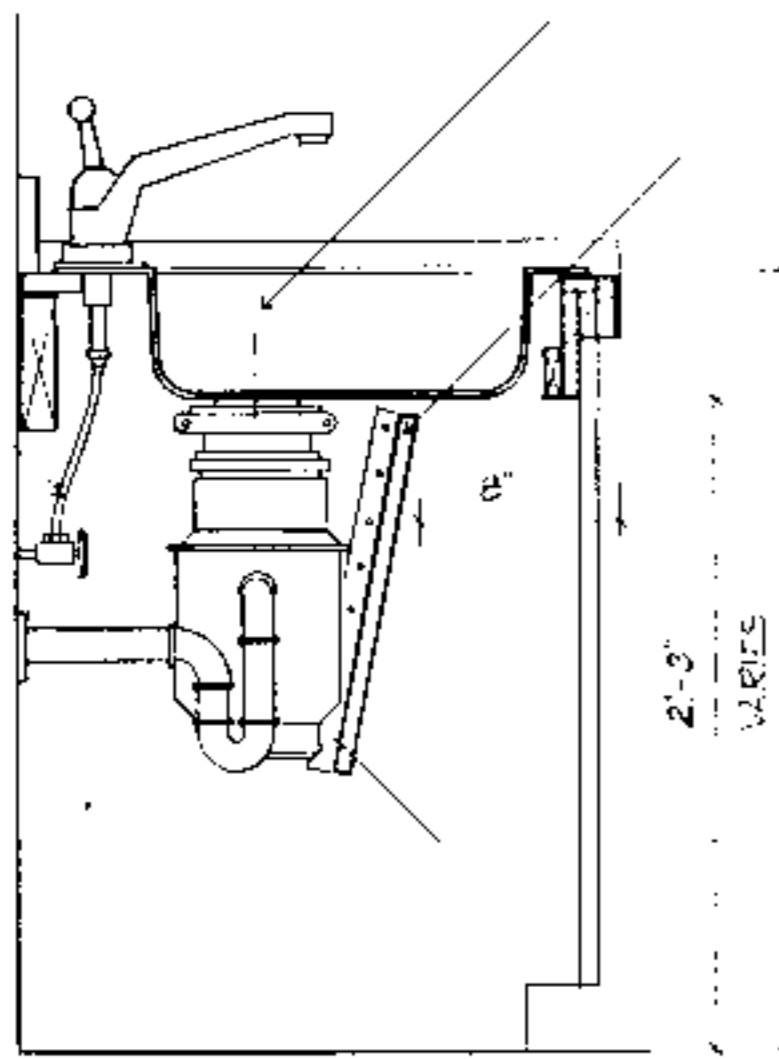
**PLAN DATA**  
Adapted by: C. Sanchez  
Drawn by: C. Hamley  
Approved by: R. Mace

Center for Accessible Housing  
School of Design  
NC SU  
Box 8413  
Raleigh, NC 27695-8413  
919.515.3082 voice/TDD  
919.515.3023 fax

Accessible House Plan # 9A  
Adapted from NC Collection Plan # 9  
North Carolina Cooperative Extension Service  
NC SU Home Economics - Housing  
Box 7405  
Raleigh, NC 27695-7405  
US Department of Agriculture, Cooperating

Plan 9A.D.116  
Sheet 4 of 6  
Date: May 93

FLEXIBLE SUPPLY PIPES



MOEN SINK E-2522 4 HL/HR

PIPE PROTECTION PANEL  
1/4" TO 3/8" PLYWOOD  
VENEER PANEL

1" x 2" MOUNTING STRIPS  
AT CABINET BEYOND

TYPICAL SECTION AT GARBAGE DISPOSAL ENCLOSURE

1/2" = 1'-0"

STANDARD  
BASE CABINETS  
ADJUSTABLE  
SINK & COUNTER

7" MAX.

1/4" TO 3/8" PLYWOOD  
VENEER PANEL  
WITH 1" x 2"  
STIFFENERS AS  
NEEDED

REMOVABLE  
PANEL, ANGLE AND  
LENGTH CONCEAL  
PIPES SCREW  
TO MOUNTING  
STRIPS

MOVABLE WOOD BLOCK  
SUPPORT AT  
ADJACENT CABINETS

3/4" PLYWOOD WITH  
PLASTIC LAMINATE

STUD KNEE WALL

FLEXIBLE SUPPLY PIPE

TAIL PIECE WITH  
SLIP JOINT

1" x 2" MOUNTING STRIPS  
AT CABINET BEYOND

TYPICAL ADJUSTABLE SINK & COUNTER DETAIL

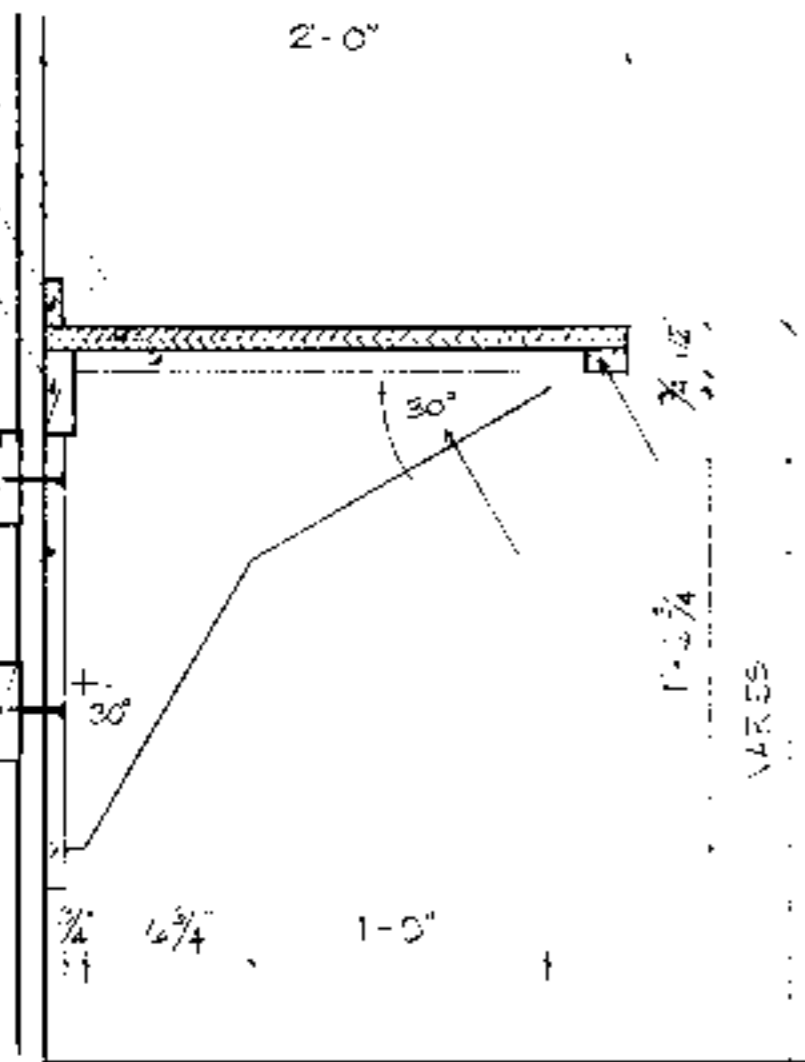
1/2" = 1'-0"

1" x 4" FLANGE  
3/4" PLYWOOD WITH  
PLASTIC LAMINATE  
1" x 2" BACKBUSH  
2" x 4"

SOLID WOOD  
STRUCTURAL BLOCKING  
BETWEEN STUDS. ALL  
BRACKETS AS NECESSARY

BRACKET FLANGE  
SCREWED, NAILED OR  
BOLTED TO BLOCKING  
OR STUDS AS NECESSARY  
TO SUPPORT ALL LOADS

1" x 4" SOLID WOOD  
FLANGE ROUTED,  
LET-IN, GLUED AND  
NAILED TO PLYWOOD



1" x 2"

3/4" BIRCH VENEER PLYWOOD  
WITH 1/4" x 3/8" SOLID WOOD  
EDGE BAN LET-IN, GLUED  
AND NAILED

NEW RECEPTACLE

GRANITE COUNTERTOP

CUT OUT PIPE  
PROTECTION PANEL  
AROUND SINK FLANGE

CONTINUOUS WOOD  
SUPPORT BUILT  
OR SCREWED TO  
METAL STUDS

PLACE SINK AS  
CLOSE TO COUNTER  
EDGE AS POSSIBLE

DRAIN COVERING  
UNRAFFED PLYWOOD  
PIPE PROTECTION  
PANEL, FLANGE  
PARTIAL AT DISCHARGE

THE DRAIN LINE GOES TO  
EXISTING OUTLET

TYPICAL SECTION THROUGH BATHROOM COUNTER AND SINK

1/2" = 1'-0"

**DISCLAIMER** These plans are supplements to plans offered by the NC Cooperative Extension Service. They are intended to improve access for people with mobility impairments and are provided for information purposes only. It is the responsibility of the contractor and owner to comply with all applicable federal, state and local codes, ordinances and regulations in the construction of the house. Modifications to these plans will be needed to meet special individual needs of people with disabilities and may also be necessary to comply with specific requirements for energy codes, wind, seismic, snow or other special loading conditions. This set must be used in conjunction with the Extension Service plans and all dimension notes and recommended details must be coordinated with the original set and verified in the field by the owner and contractor. For information on product manufacturers contact the Center for Accessible Housing.

BUILDING DATA	
# Bedrooms	_____
Square footage: heated	_____
storage/porch	_____
total	_____

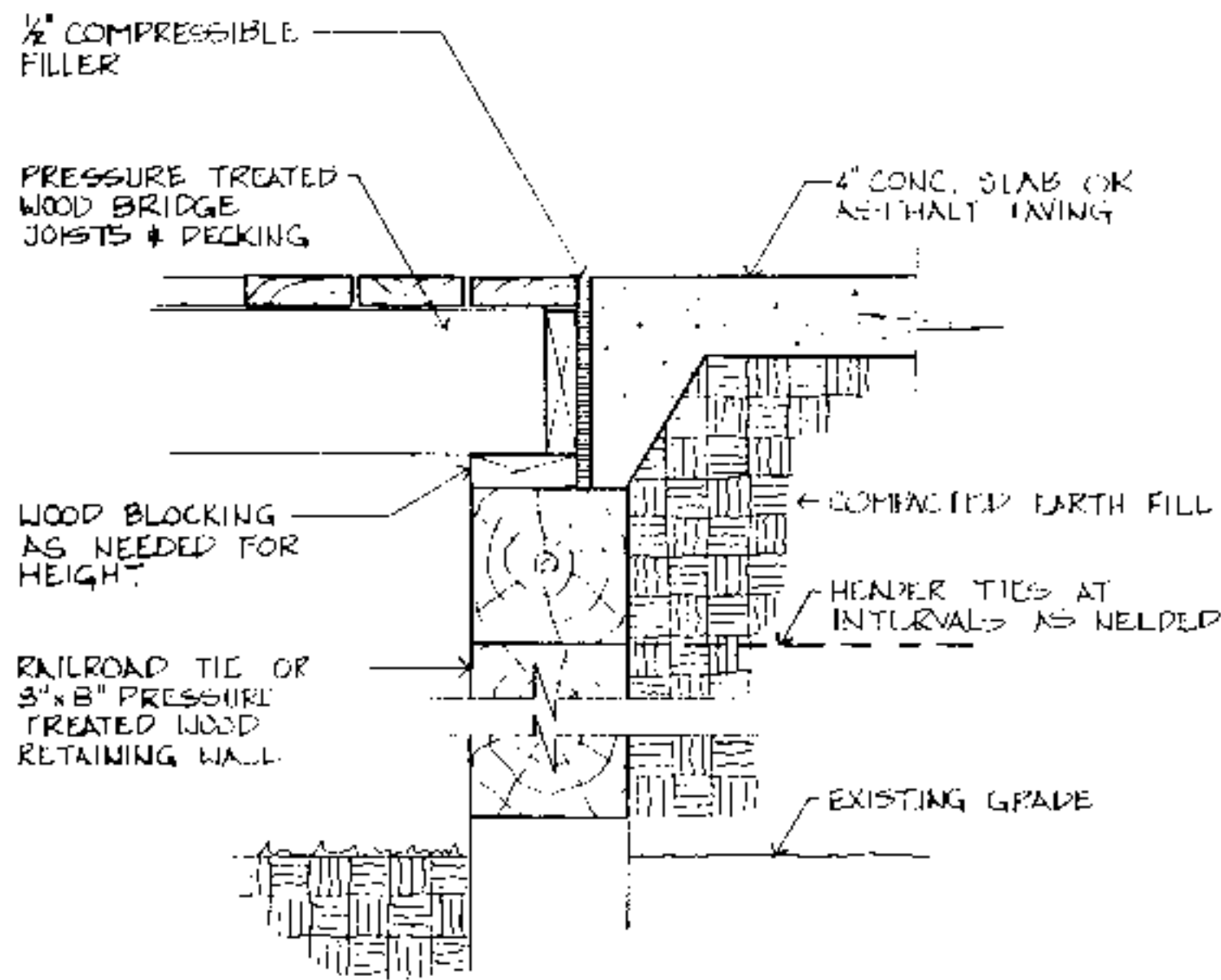
PLAN DATA	
Adapted by:	C. Sanchez
Drawn by:	C. Humkey
Approved by:	R. Mace

Center for Accessible Housing  
School of Design  
NCSU  
Box 8613  
Raleigh, NC 27695-8613  
919.515.3082 voice/TDD  
919.515.3023 fax

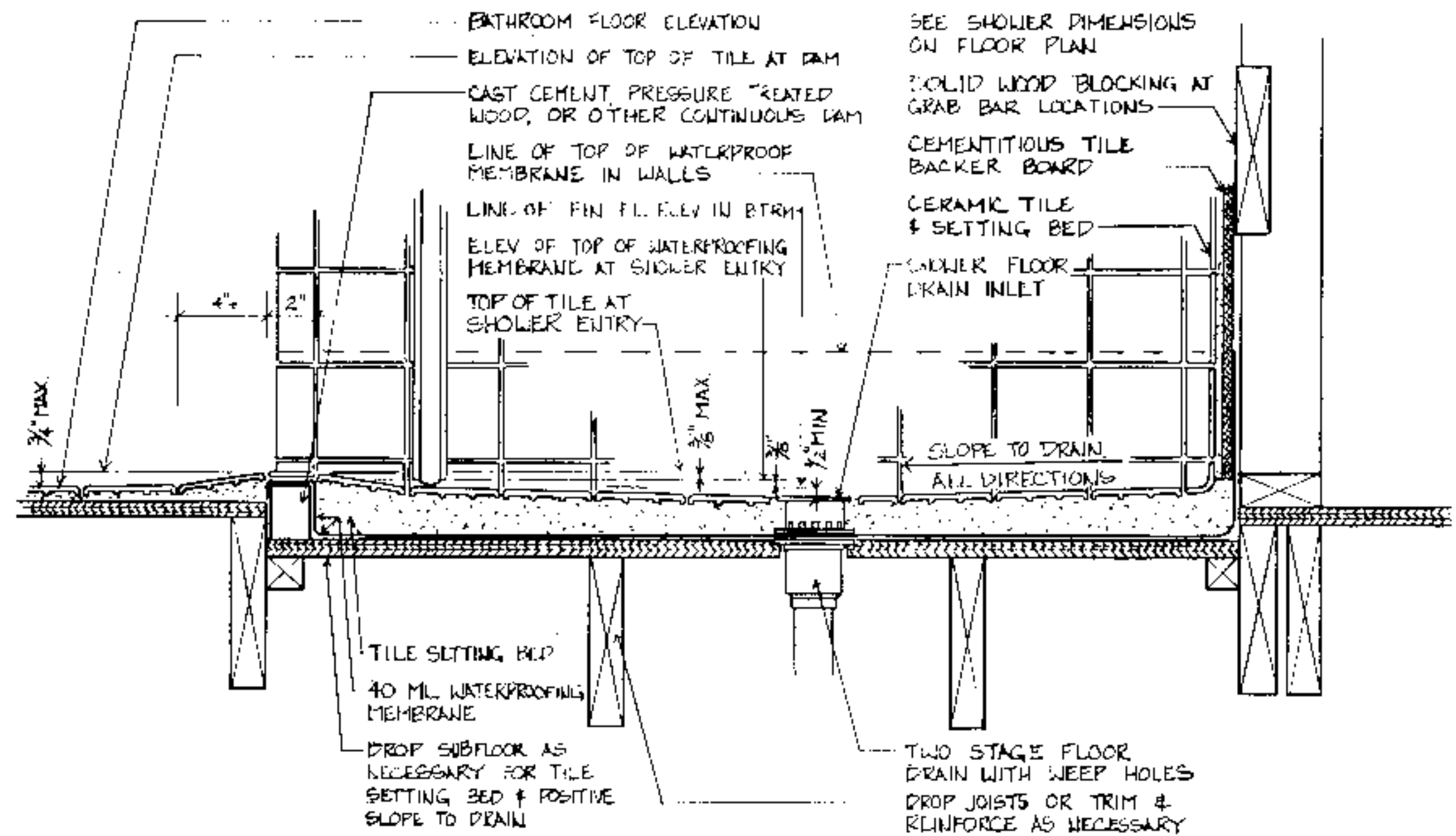
Accessible House Plan # \_\_\_\_\_  
Adapted from NC Collection Plan # \_\_\_\_\_  
North Carolina Cooperative Extension Service  
NCSU Home Economics - Housing  
Box 7605  
Raleigh, NC 27695-7605  
US Department of Agriculture, Cooperating

PLAN	DATA
Sheet	5 of 6
Date	May 93

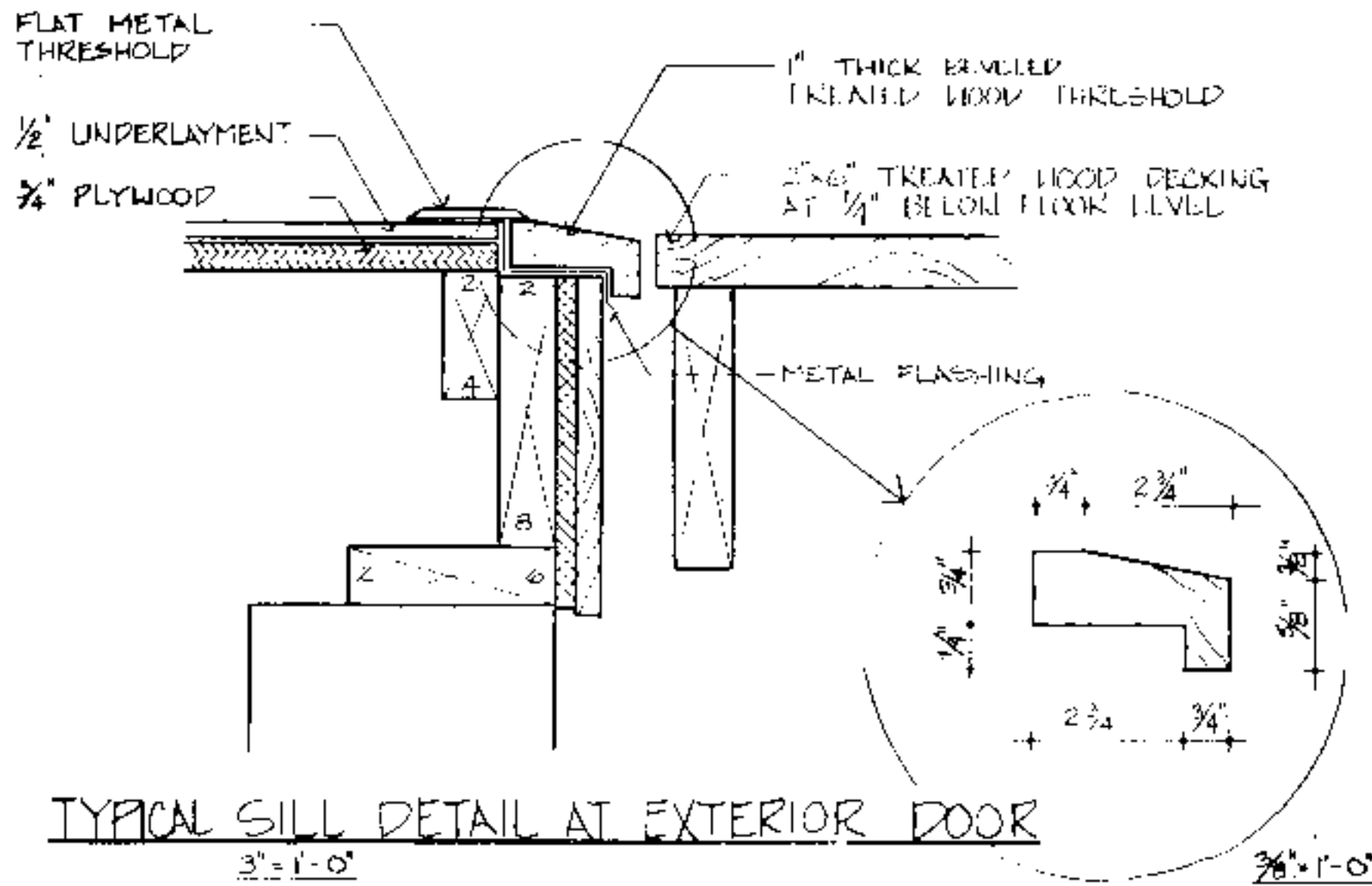




**TYPICAL BRIDGE END DETAIL**  
1/2" = 1'-0"



**TYPICAL ROLL-IN SHOWER FLOOR & DRAIN DETAIL AT WOOD FRAME CONSTRUCTION**  
3" = 1'-0"



**TYPICAL SILL DETAIL AT EXTERIOR DOOR**  
3" = 1'-0"

**DISCLAIMER** These plans are supplements to plans offered by the NC Cooperative Extension Service. They are intended to improve access for people with mobility impairments and are provided for information purposes only. It is the responsibility of the contractor and owner to comply with all the applicable federal, state and local codes, ordinances and regulations in the construction of the house. Modifications to these plans will be needed to meet special individual needs of people with disabilities and may also be necessary to comply with specific requirements for energy codes, wind, seismic, snow or other special loading conditions. This set must be used in conjunction with the Extension Service plans and all dimensions notes and recommended details must be coordinated with the original set and verified in the field by the owner and contractor. For information on product manufacturers contact the Center for Accessible Housing.

BUILDING DATA	
# Bedrooms	_____
Square Footage: heated	_____
storage/corner	_____
porch	_____
total	_____

PLAN DATA	
Adopted by:	C. Sanchez
Drawn by:	C. Humkey
Approved by:	R. Mace

Center for Accessible Housing  
School of Design  
NCSU  
Box 8613  
Raleigh, NC 27695-8613  
919.515.3082 voice/TDD  
919.515.3023 fax

Accessible House Plan # \_\_\_\_\_  
Adapted from NC Collection Plan # \_\_\_\_\_  
North Carolina Cooperative Extension Service  
NCSU Home Economics - Housing  
Box 7605  
Raleigh, NC 27695-7605  
US Department of Agriculture, Cooperating

PLAN	DATA
Sheet	6 of 6
Date	May 93