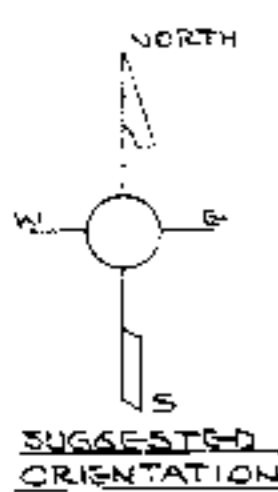


FLOOR PLAN
SCALE: 1/4" = 1'-0"



Helping people put knowledge to work.

WINDOW SCHEDULE			
MARK	SIZE	DESCRIPTION	No. Req'd
(A)	32 x 43	DOUBLE HUNG, WOOD	4
(B)	22 x 32	" " "	2
(C)	34 x 32	" " "	1
(D)	3-22 x 43	" " "	1

ALL WINDOWS SHALL BE NWMA CERTIFIED, WITH DOUBLE GLAZING OR STORM SASH

DOOR SCHEDULE			
MARK	SIZE	DESCRIPTION	No. Req'd
(1)	32 x 68	SOLID CORE FLUSH EXTERIOR	2
(2)	32 x 68	" " " " EXT. 1/2 GLASS	1
(3)	22 x 68	HOLLOW CORE FLUSH, INTERIOR	4
(4)	22 x 68	HOLLOW CORE FLUSH, INTERIOR	2
(5)	42 x 68	" " " " INT. BI-FOLD	4
(6)	52 x 68	" " " " "	1
(7)	32 x 68	" " " " "	1
(8)	22 x 68	" " " " "	1
(9)	32 x 68	FOLDING ACCORDIAN DOOR	1
(10)	12 x 68	HOLLOW CORE FLUSH, INTERIOR	1

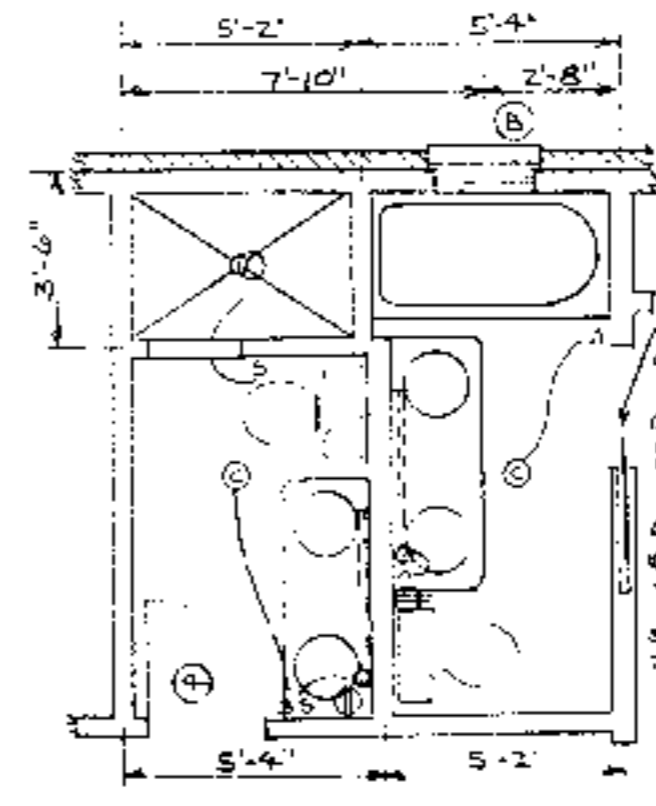
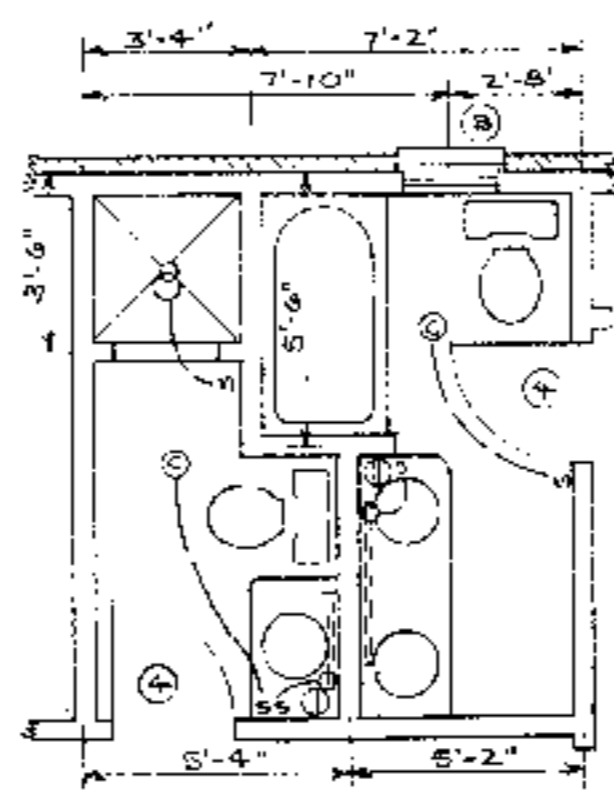
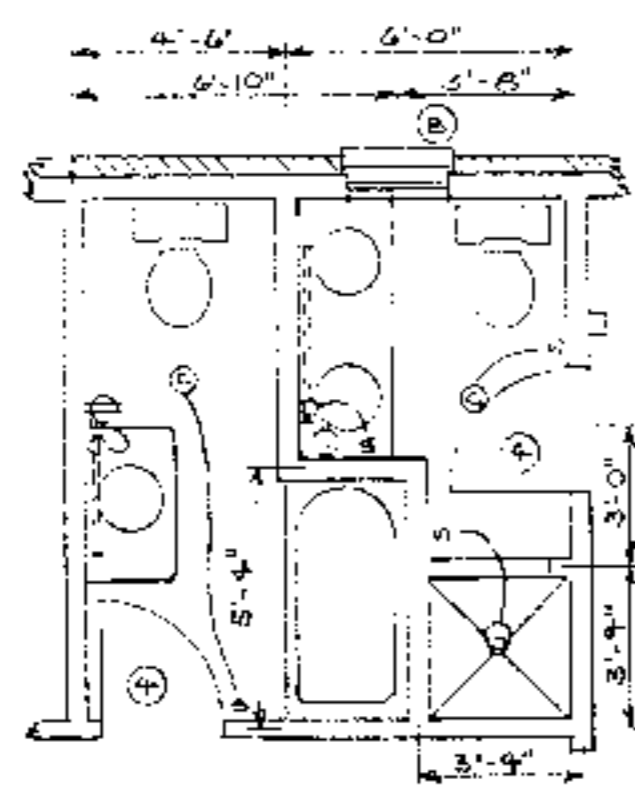
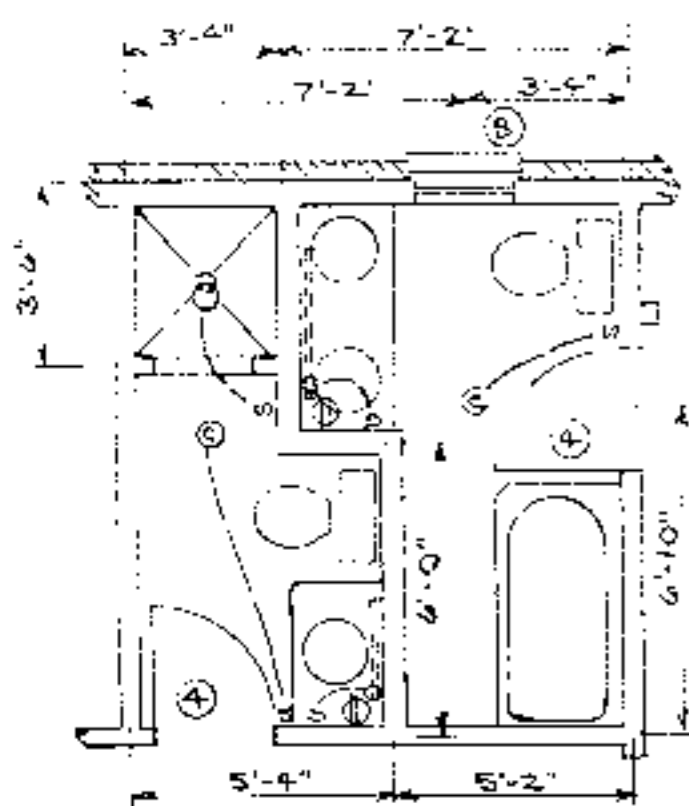
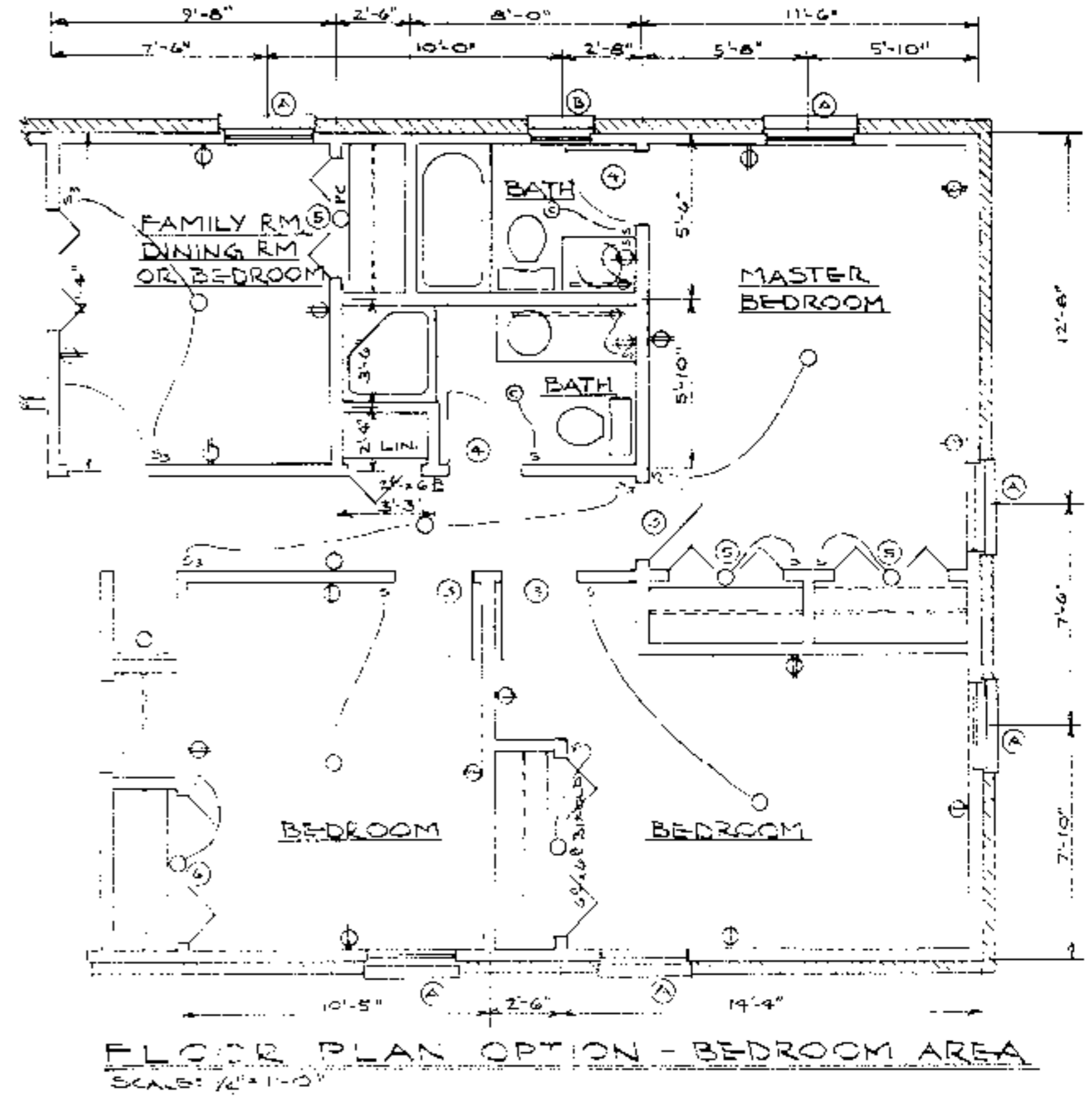
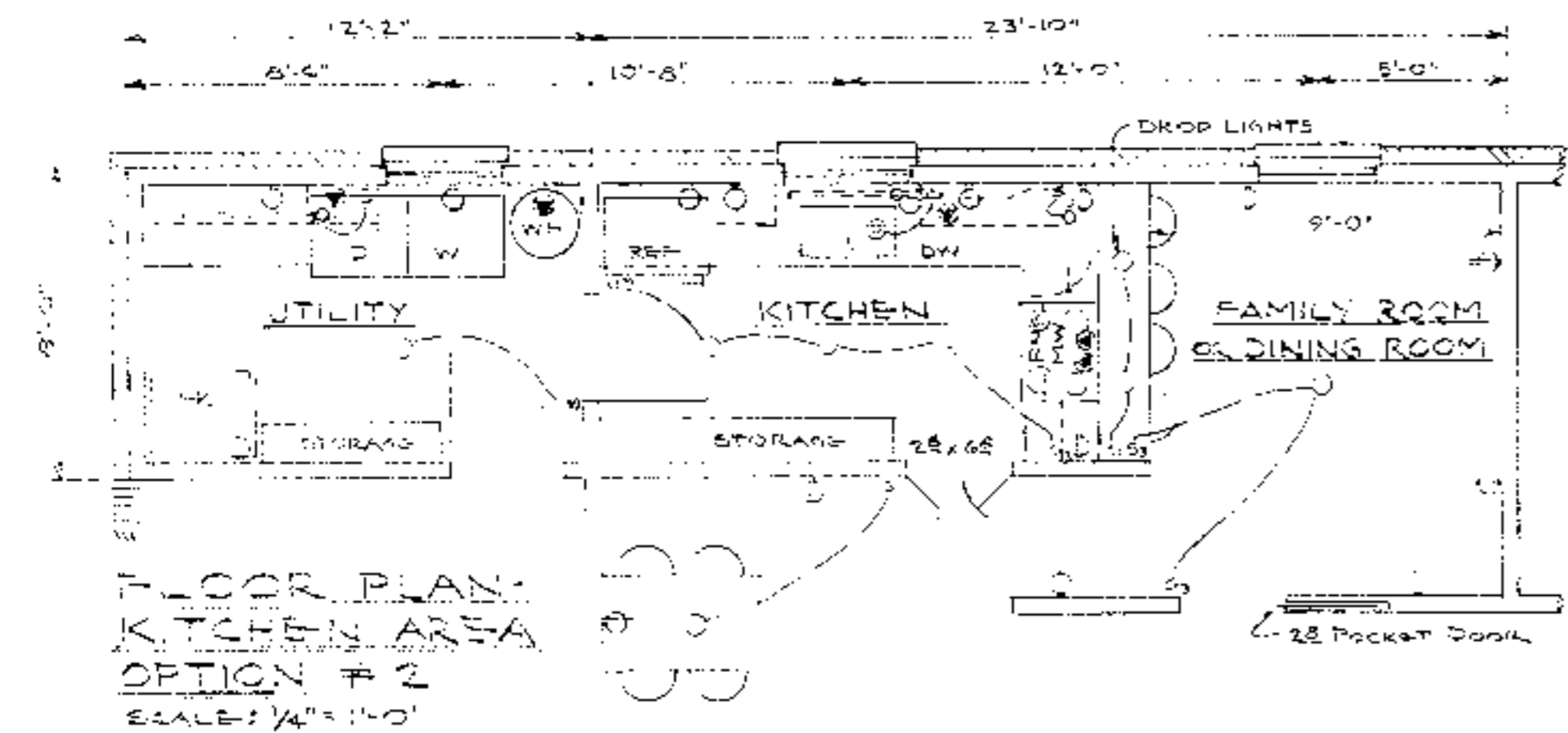
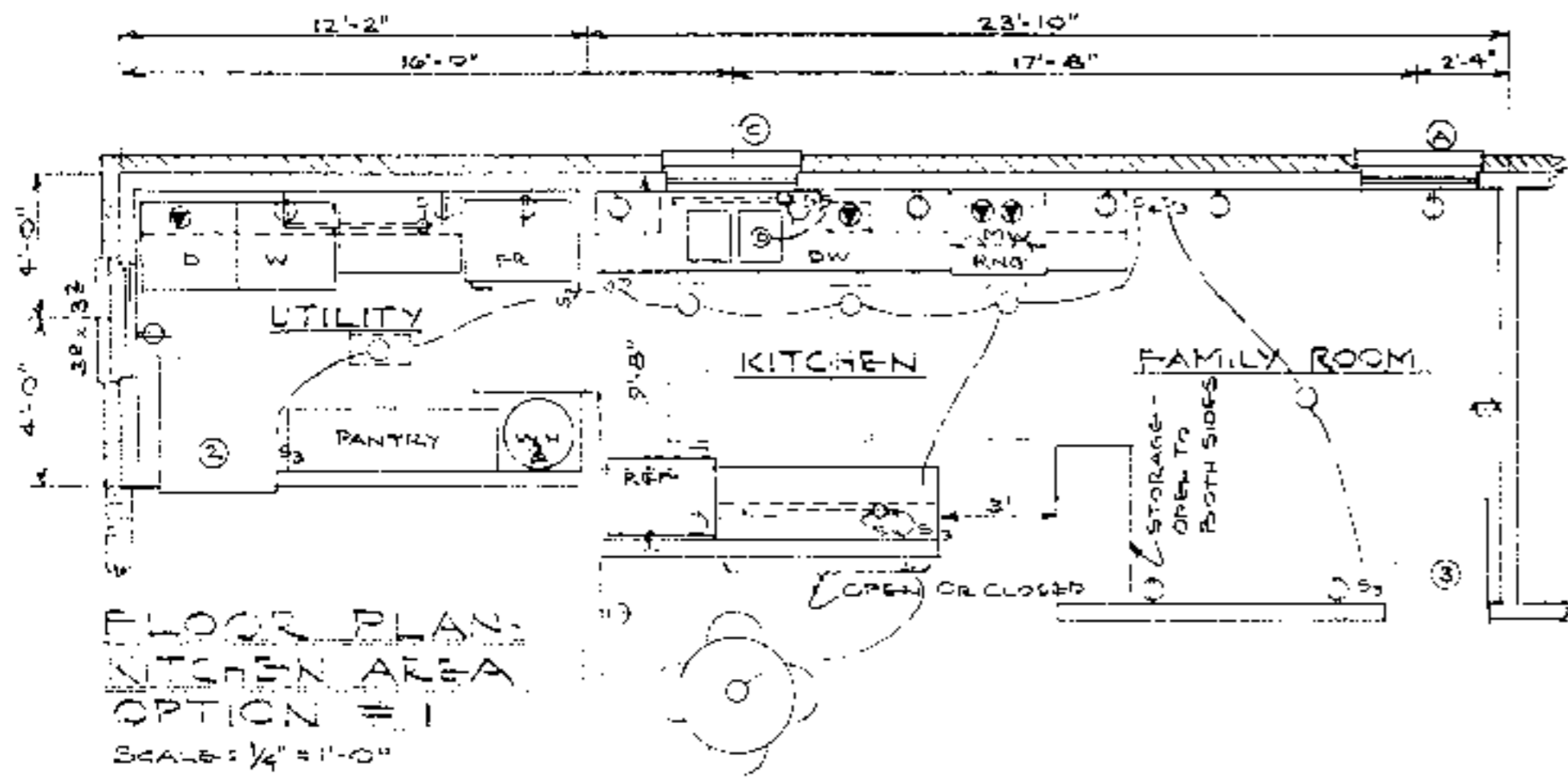
ELECTRICAL SYMBOLS	
SYMBOL	DESCRIPTION
S	SINGLE POLE SWITCH
S3	THREE WAY SWITCH
S4	FOUR WAY SWITCH
⊕	DUPLEX OUTLET
⊕ WP	WEATHERPROOF OUTLET
⊕	SPECIAL PURPOSE OUTLET
○	LIGHTING OUTLET
⊕	WALL BRACKET LIGHT
⊕	COMB. FAN, LIGHT, HEATER
⊕	FLUO. STRIP IN SMOKE, COVER, CABINET

BUILDING DATA	
SQUARE FOOTAGE:	
HEATED:	1443
CARPENT, PORCH:	375
TOTAL	1818

ESTIMATED HEATING LOAD
20,100 BTU/HR @ 60° TO
ESTIMATED COOLING LOAD
23,700 BTU/HR = 2 TONS ±

N.C. AGRICULTURAL EXTENSION SERVICE
HOME ECONOMICS — HOUSING
N.C. State University, Raleigh, North Carolina
and
U.S. Department of Agriculture, Cooperating

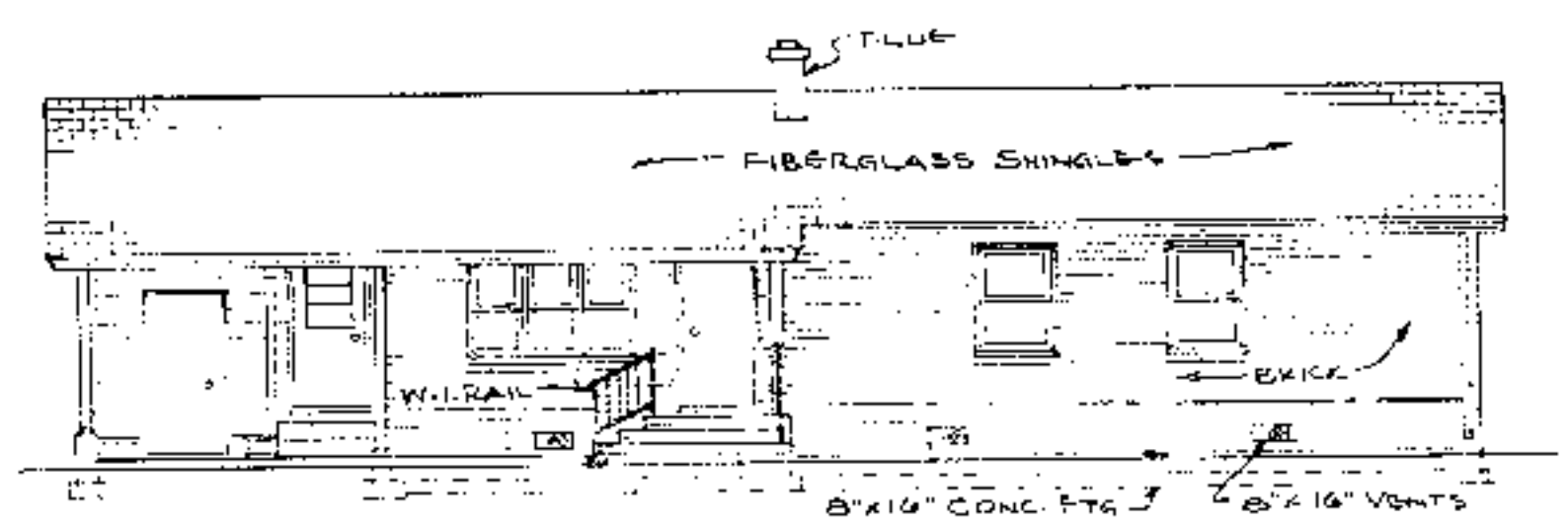
3-BEDROOM HOUSE		1443
W/ CARPORT		Sq. Ft. H.T.D.
REV. OF NC 89-R USDA 7202	N.C. 6 '66	Sheet 1 of 3



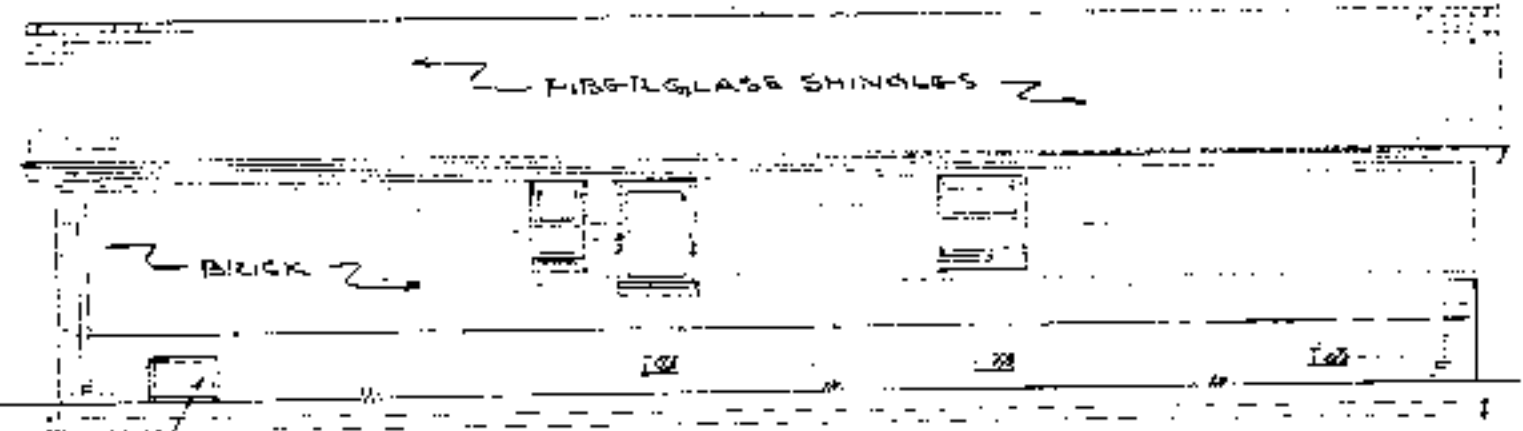
FLOOR PLAN OPTIONS - BATHROOM AREA - 1/4" = 1'-0"



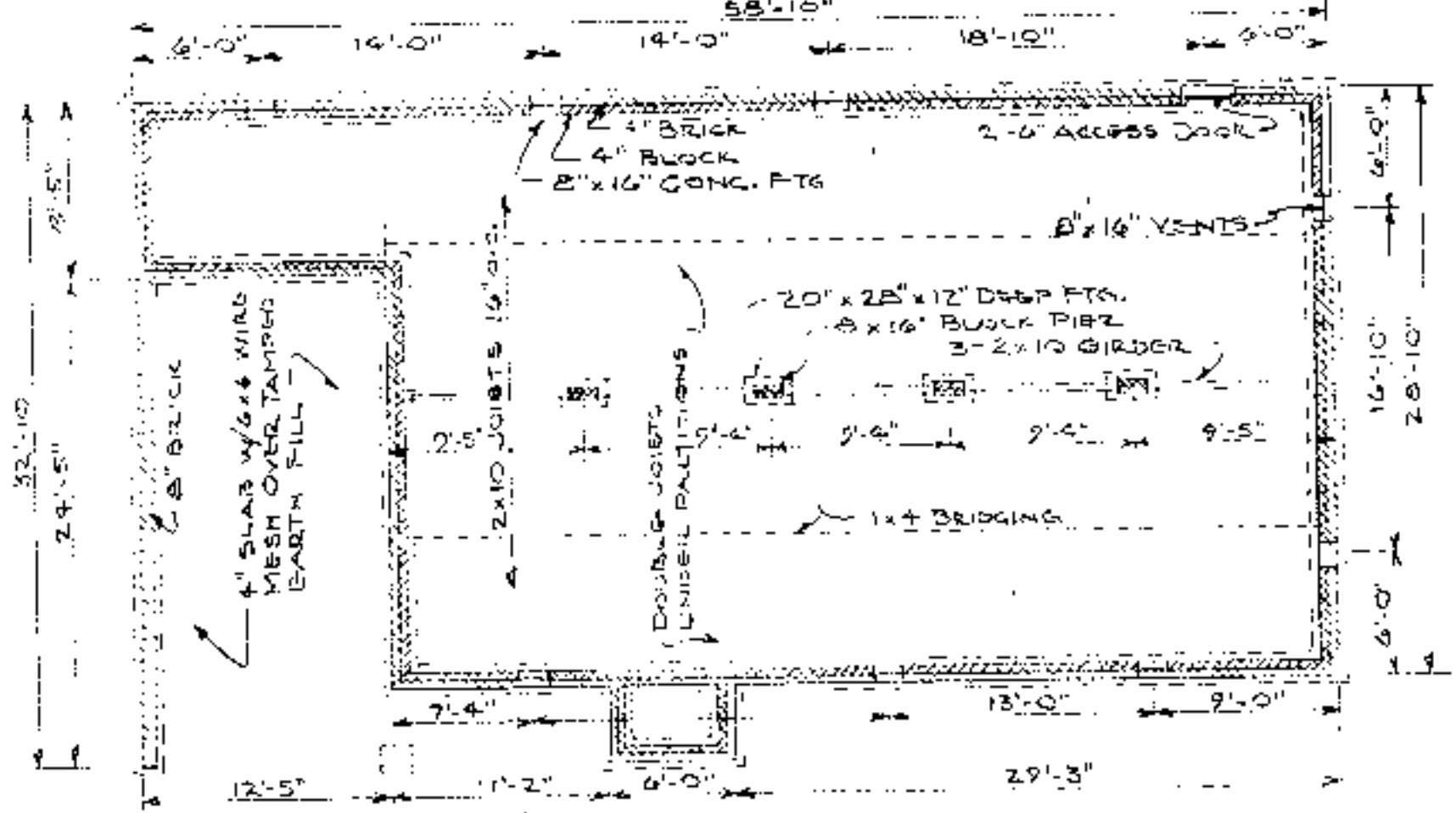
N.C. AGRICULTURAL EXTENSION SERVICE	
HOME ECONOMICS -- HOUSING	
N.C. State University, Raleigh, North Carolina and U.S. Department of Agriculture, Cooperating	
3-BEDROOM HOUSE W/CARPORIT	14-43 Sq. Ft. HTD
REV. OF NC 89-R USDA 7202	N.C. 6 '88 Sheet 2 of 3



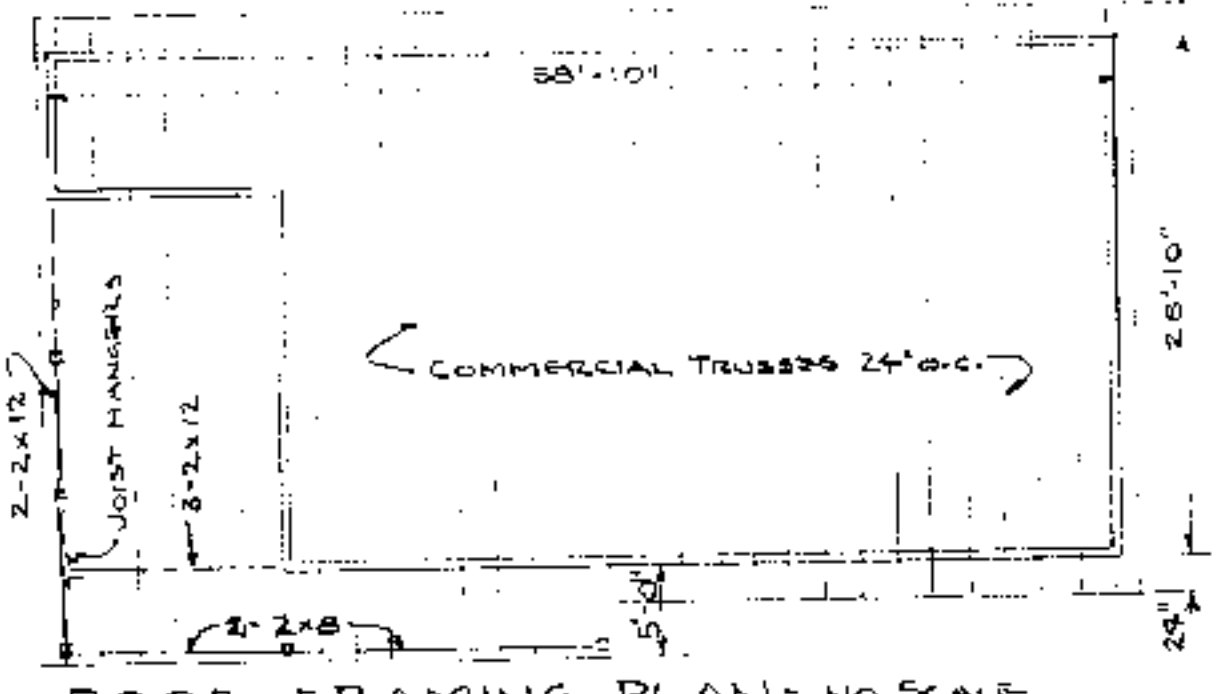
FRONT ELEVATION
SCALE: 1/8" = 1'-0"



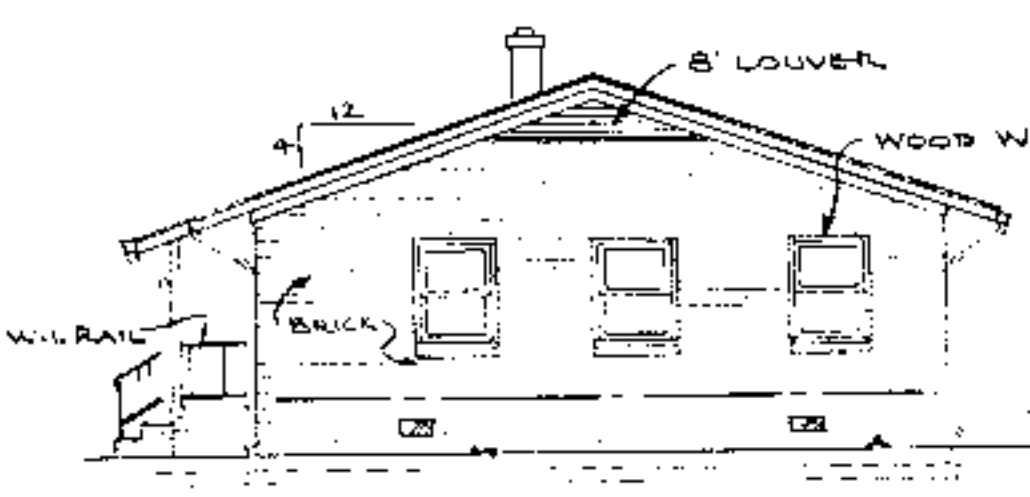
REAR ELEVATION
SCALE: 1/8" = 1'-0"



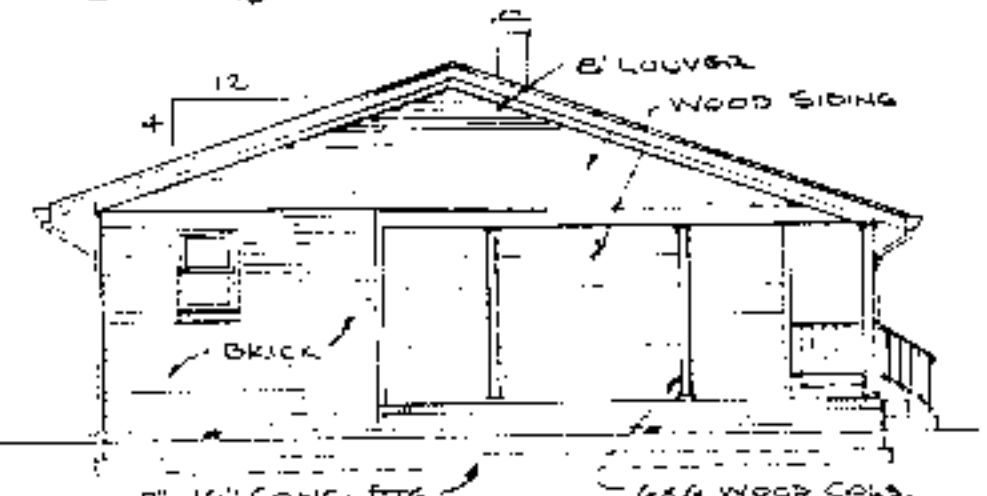
FOUNDATION PLAN - 1/8" = 1'-0"



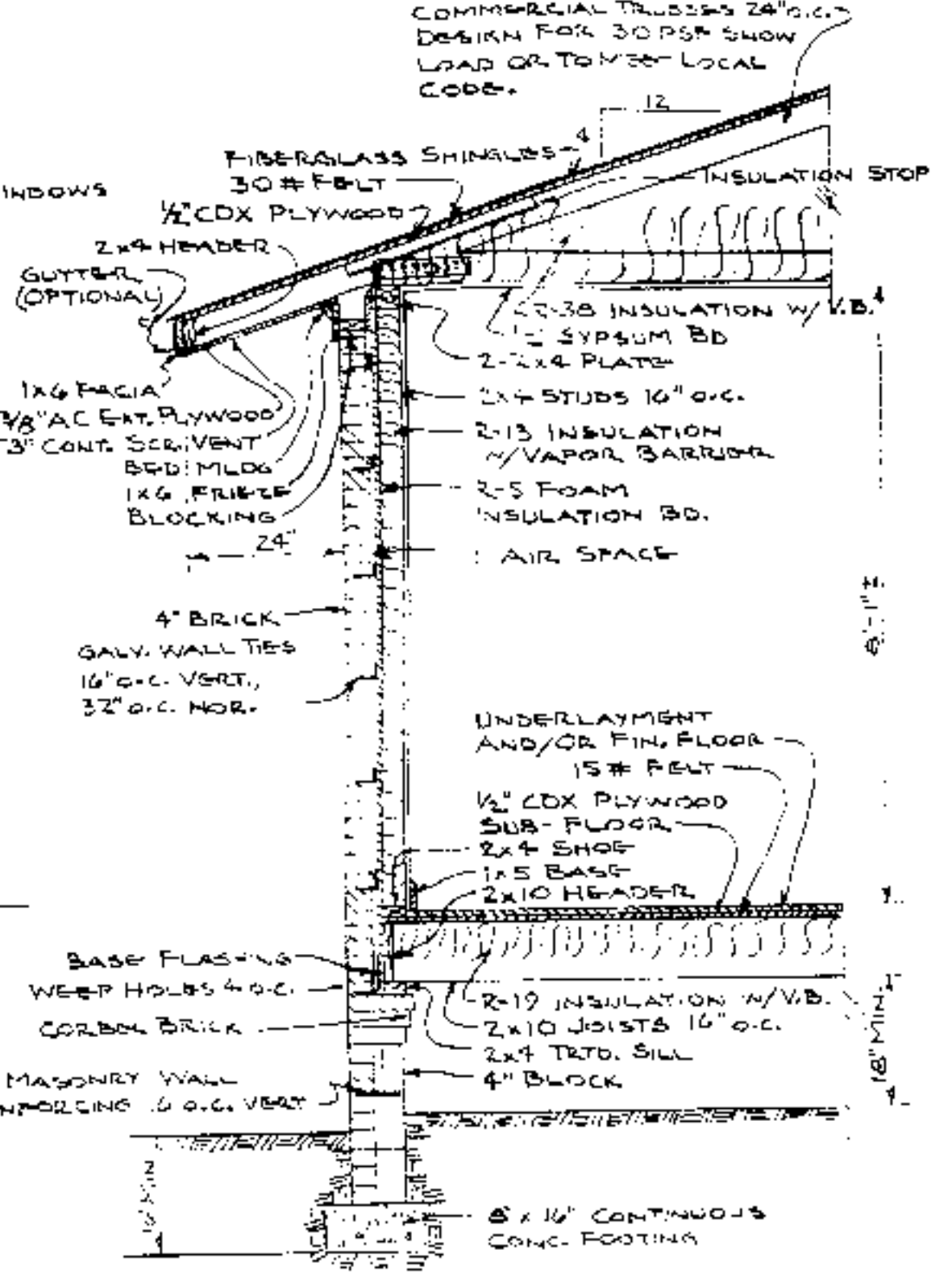
ROOF FRAMING PLAN - NO SCALE



RIGHT SIDE ELEVATION
SCALE: 1/8" = 1'-0"



LEFT SIDE ELEVATION
SCALE: 1/8" = 1'-0"



TYPICAL WALL SECTION
SCALE: 1/2" = 1'-0"

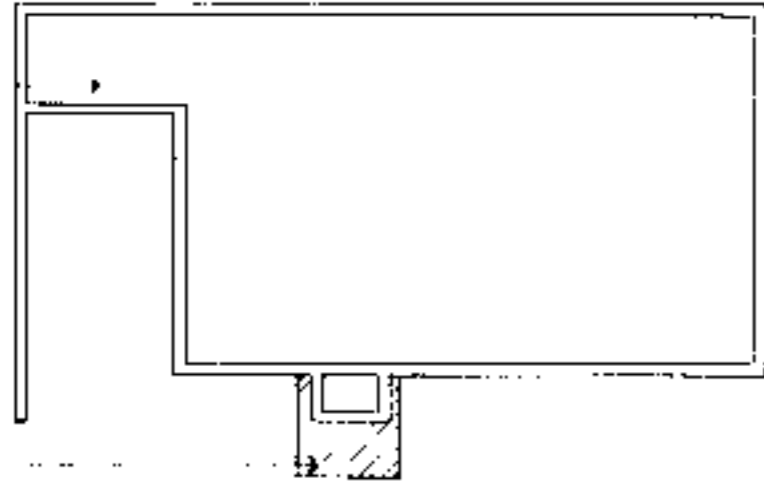
CONSTRUCTION CHECKLIST

- 1- CONSULT LOCAL BUILDING CODES AND LENDING AGENCIES BEFORE BEGINNING CONSTRUCTION (ROOF FRAMING IS SHOWN FOR 30 PSF SNOW LOAD)
- 2- ACTUAL FOOTING SIZE & REINFORCING DEPENDS ON LOCAL SOIL CONDITIONS.
- 3- ABSOLUTELY NAIL & ANCHOR JOINTS.
- 4- SHEATH CORNERS WITH 1/2" PLYWOOD OR HIGH DENSITY FIBERBOARD OR USE DIAGONAL BRACING.
- 5- USE EAT-2102 GLUE PLYWOOD WHEREVER IT MAY BE WETTED DURING OR AFTER CONSTRUCTION.
- 6- PRESSURE TREAT ALL WOOD WITH GROUND CONTACT AND PROVIDE OTHER NEEDED TERMITES CONTROL.
- 7- R-VALUES MAY BE ADJUSTED TO LOCAL TEMPERATURES AND FUEL COSTS.
- 8- PROVIDE 1 SQ. FT. MIN. OF ATTIC VENT OPENINGS PER 150 SQ. FT. OF CEILING AREA.
- 9- WEATHERIZE ALL OPENINGS & JOINTS.



N.C. AGRICULTURAL EXTENSION SERVICE		
HOME ECONOMICS — HOUSING		
N.C. State University, Raleigh, North Carolina and U.S. Department of Agriculture, Cooperating		
3-BEDROOM HOUSE	1443	Sq. Ft. HTD.
W/CARPORT		
REV. OF NC 87-2 USDA 7202	N.C. 6	'86
		Sheet 3 of 3

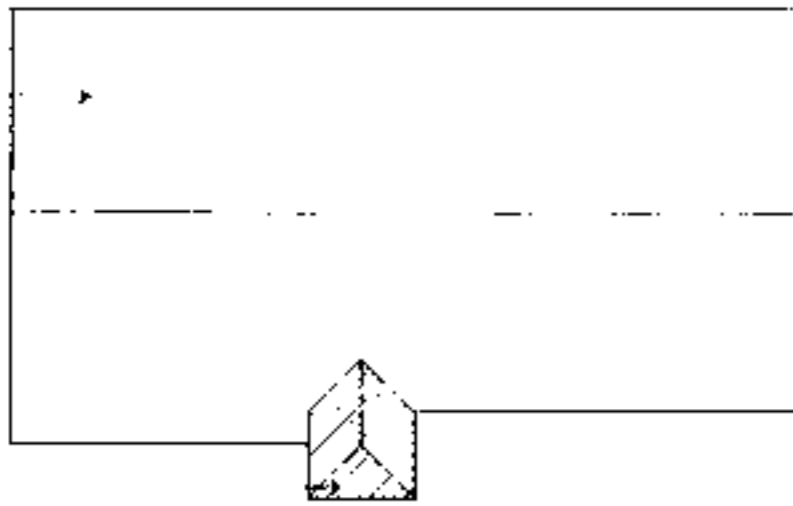
FOUNDATION PLAN
SEE ORIGINAL PLANS
FOR DIMENSIONS, NOTES, ETC.



AMENDED ACCESSIBLE
FOUNDATION AREA
REVISE AS NECESSARY

KEY FOUNDATION PLAN
NO SCALE

ROOF PLAN
SEE ORIGINAL PLANS
FOR DIMENSIONS, NOTES, ETC.



AMENDED ACCESSIBLE
ROOF AREA
REVISE AS NECESSARY

KEY ROOF FRAMING PLAN
NO SCALE

INFORMATION

Supplemental Accessible House Plan # GA

Adapted from and to be used in conjunction with original plan # NC 6

SEE ORIGINAL PLANS FOR ALL WALL SECTIONS, INTERIOR ELEVATIONS, DETAILS, CONSTRUCTION
DETAILS, SCHEDULES AND MISCELLANEOUS INFORMATION.

DISCLAIMER These plans are supplements to plans offered by the NC Cooperative Extension Service. They are intended to improve access for people with mobility impairments and are provided for information purposes only. It is the responsibility of the contractor and owner to comply with all the applicable federal, state and local codes, ordinances and regulations in the construction of the house. Modifications to these plans will be needed to meet special individual needs of people with disabilities and they also be necessary to comply with specific requirements for energy codes, wind, seismic, snow or other special loading conditions. This set must be used in conjunction with the Extension Service plans and all dimensions, notes and recommended details must be coordinated with the original set and verified in the field by the owner and contractor. For information on product manufacturers contact the Center for Accessible Housing.

BUILDING DATA

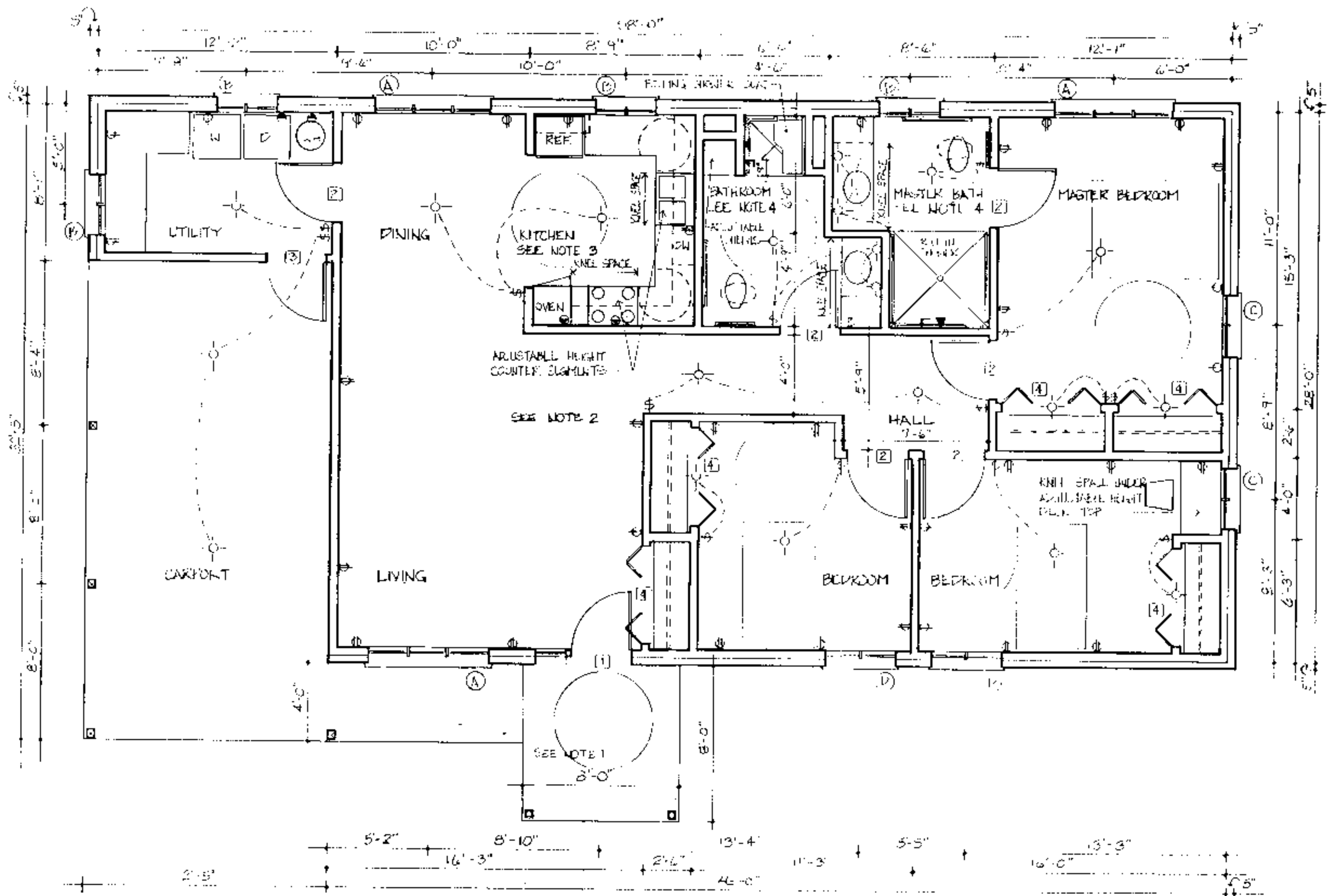
# Bedrooms	<u>2</u>
Square Footage: heated	<u>1443</u>
storage/corport	<u>375</u>
porch	<u>64</u>
total	<u>1882</u>

PLAN DATA
Adapted by: C. Sanchez
Drawn by: C. Humkey
Approved by: R. Mace

Center for Accessible Housing
School of Design
NCSU
Box 8613
Raleigh, NC 27695-8613
919.515.3082 voice/TDD
919.515.3023 fax

Accessible House Plan # GA
Adapted from NC Collection Plan # 6
North Carolina Cooperative Extension Service
NCSU Home Economics - Housing
Box 7605
Raleigh, NC 27695-7605
US Department of Agriculture, Cooperating

PLAN DATA
Sheet 1 of 6
Date May 93



FLOOR PLAN
1/4" = 1'-0"

Note 1. Entrance

- Viewing window glass or sidelights or high/low peep hole viewer or extreme wide angle lens viewer for security
- Level clear floor area both inside and outside of door to provide maneuvering space at doors
- 36-inch wide doors
- Maximum of 1/4-inch vertical change in level at thresholds and other changes in level
- Lever handle on doors
- 12-inch wide outside shelf for packages

Note 2. General

- Electrical receptacles are to be placed at easy to reach height: electrical outlets 18 inches above floor, light switches 38 inches above floor
- Additional electrical outlets in bedrooms to accommodate assistive devices
- Thermostats/controls 44 inches above the floor
- Rocker light switches
- 42-inch clearance in hallways, 32-inch width minimum clear opening width in doorways, 24-inch wide space on latchside of doors on pull side
- Lever handle on doors. Auxiliary handles on doors for ease in closing. Loop type handles 30-36 inches above floor and 6 inches from hinge edge on pull side.
- Window sill between 18 and 36 inches above the floor
- Casement windows
- Smooth dense floor coverings for easy maneuvering
- Adjustable height closet rods and storage shelves from 3'-0" to 5'-6"

Note 3. Kitchen

- Counter segments elevation can be set at different heights from 30 to 36 inches.
 - Kneespace with pipe protection panel or base cabinets at key locations
 - Front mounted controls on the stove
 - Loop cabinet handles and drawer pulls
 - 5' diameter turning space
 - Lever handle faucet
 - Cabinet doors sliding or spring loaded hinges on cabinet doors
 - Cabinets with full extension pull out shelves
 - Lazy Susans
 - Side-by-side refrigerator/freezer
 - Adaptable removable base cabinets
- See sheet 5 for adjustable sink and counter detail, section at garbage disposal enclosure detail, and counter support bracket detail.

Note 4. Bathrooms

- Hand held shower head
 - Lever handle faucets
 - Offset controls in tub/shower
 - Open front lavatory with knee space with protection panel
 - 5' diameter turning space
 - Dual lever faucet controls permit easy manipulation of the flow of water and water temperature.
 - Reinforced walls to accommodate grab bars. Suggested grab bar locations are as required by ANSI. Actual location may need to meet individual needs. Full wall reinforcement, as specified, allows for any position or height to be accommodated.
- See sheets 5 & 6 for section of bathroom counter and sink detail, and typical suggested roll-in shower floor and drain detail at wood frame construction.

DISCLAIMER These plans are supplements to plans offered by the NC Cooperative Extension Service. They are intended to improve access for people with mobility impairments and are provided for information purposes only. It is the responsibility of the contractor and owner to comply with all the applicable federal, state and local codes, ordinances and regulations in the construction of the house. Modifications to these plans will be needed to meet special individual needs of people with disabilities and may also be necessary to comply with specific requirements for energy codes, wind, seismic, snow or other special loading conditions. The set must be used in conjunction with the Extension Service plans and all dimensions notes and recommended details must be co-ordinated with the original set and verified in the field by the owner and contractor. For information on product manufacturers contact the Center for Accessible Housing.

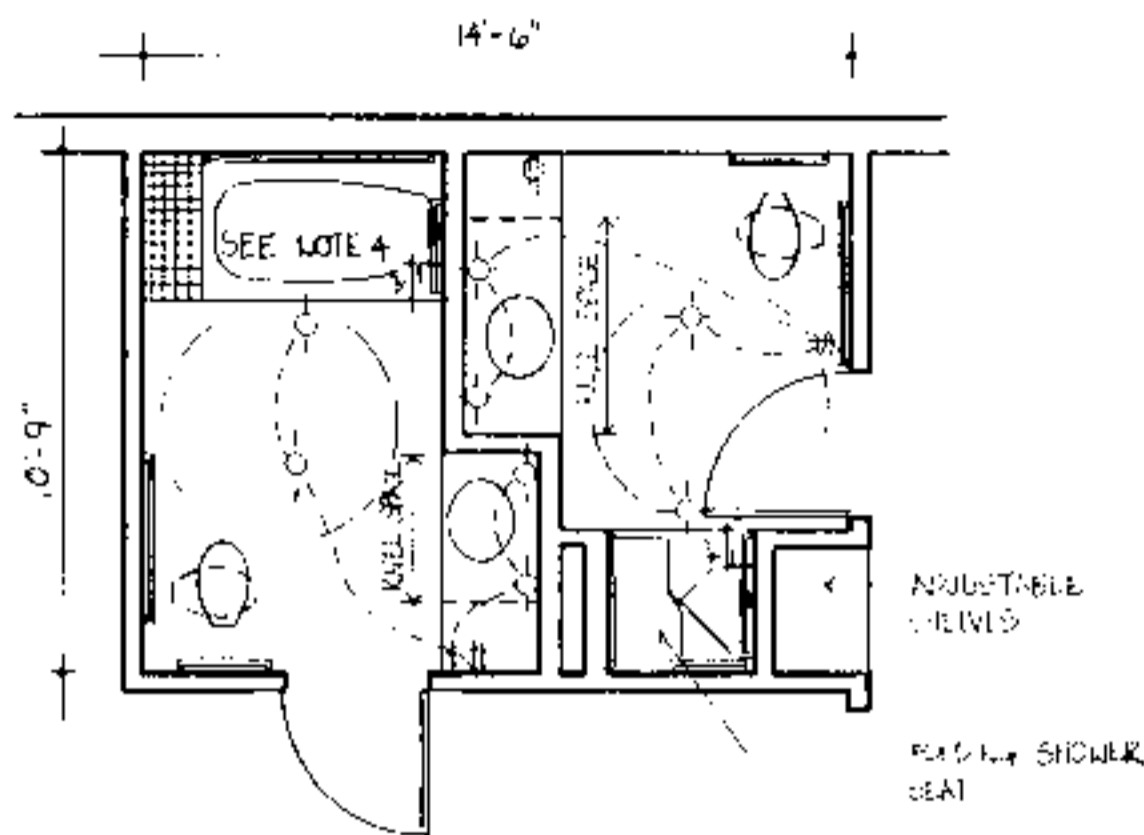
BUILDING DATA	
# Bedrooms	3
Square Footage: heated	1443
storage/carport	375
porch	64
total	1882

PLAN DATA
Adapted by: C. Sanchez
Drawn by: C. Humkey
Approved by: R. Mace

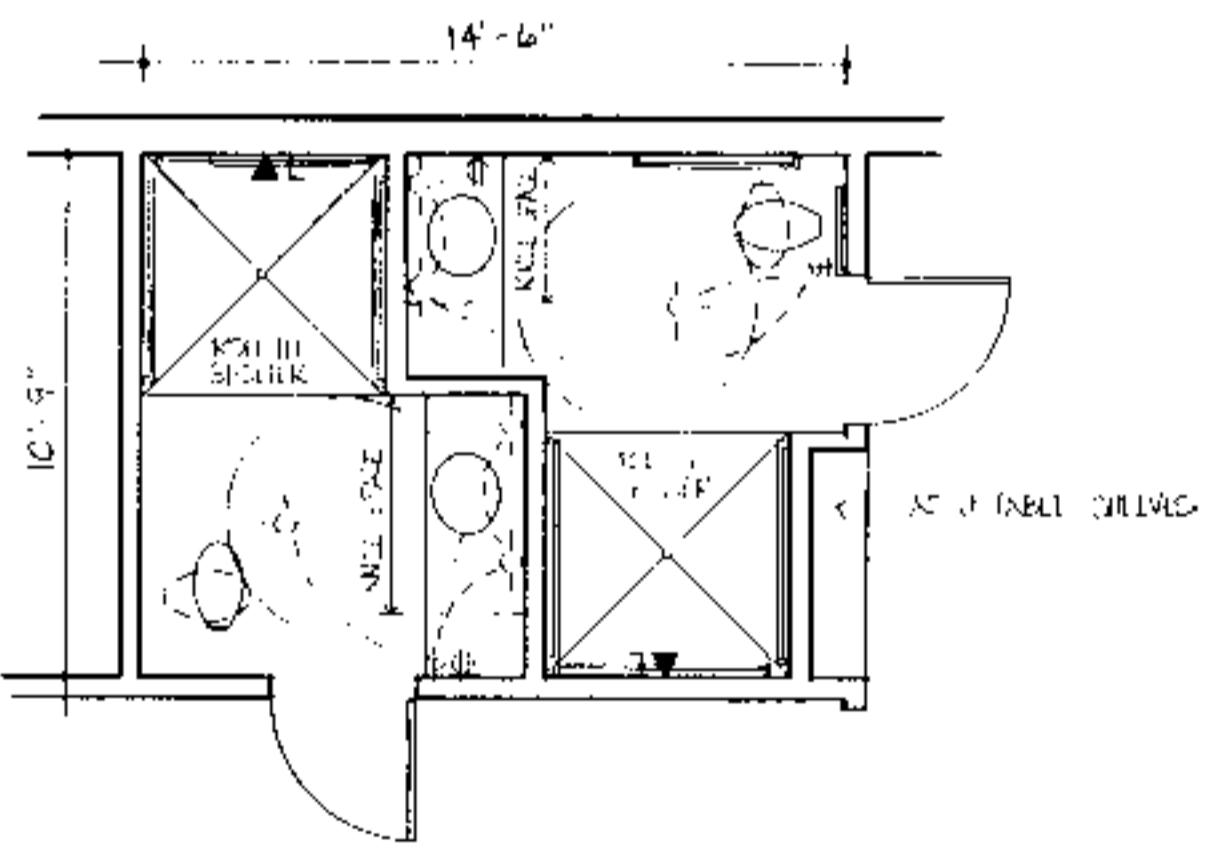
Center for Accessible Housing
School of Design
NCSU
Box 8613
Raleigh, NC 27695-8613
919.515.3082 voice/TDD
919.515.3023 fax

Accessible House Plan # GA
Adapted from NC Collection Plan # GA
North Carolina Cooperative Extension Service
NCSU Home Economics - Housing
Box 7605
Raleigh, NC 27695-7605
US Department of Agriculture, Cooperating

PLAN DATA
Sheet 2 of 6
Date May 93



BATHROOM OPTION- 3'-3' TRANSFER SHOWER/
TUB WITH BUILT-IN TRANSFER SURFACE
1/4" = 1'-0"



BATHROOM OPTION- 5'-5' ROLL IN SHOWER
1/4" = 1'-0"

House # 5

Door Schedule		Symbol	
Mark	Size	Description	No. Required
1	3'0" x 6'8"	exterior hardwood w/side light	1
2	3'0" x 6'8"	interior hardwood	6
3	3'0" x 6'8"	exterior hardwood	1
4	5'0" x 6'8"	interior bifold	5

Window Schedule		Symbol	
Mark	Size	Description	No. Required
A	6'0" x 5'2"	casement	3
B	3'0" x 3'2"	casement	4
C	3'0" x 5'2"	casement	2
D	3'6" x 5'2"	casement	2

DISCLAIMER These plans are supplements to plans offered by the NC Cooperative Extension Service. They are intended to improve access for people with mobility impairments and are provided for information purposes only. It is the responsibility of the contractor and owner to comply with all the applicable federal, state and local codes, ordinances and regulations in the construction of the house. Modifications to these plans will be needed to meet special individual needs of people with disabilities and may also be necessary to comply with specific requirements for energy codes, wind, seismic, snow or other special loading conditions. These must be used in conjunction with the Extension Service plans and all dimensions notes and recommended details must be coordinated with the original set and verified in the field by the owner and contractor. For information on product manufacturers contact the Center for Accessible Housing.

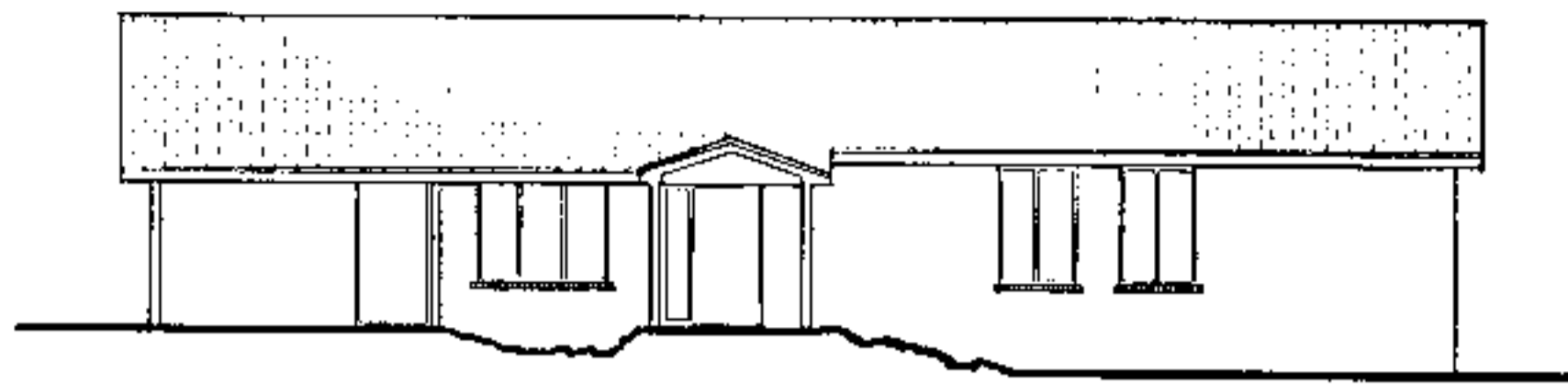
BUILDING DATA	
# Bedrooms	3
Square Footage: heated	445
storage/corpor	375
porch	62
total	1882

PLAN DATA
Adapted by: C. Sanchez
Drawn by: C. Humkey
Approved by: R. Mace

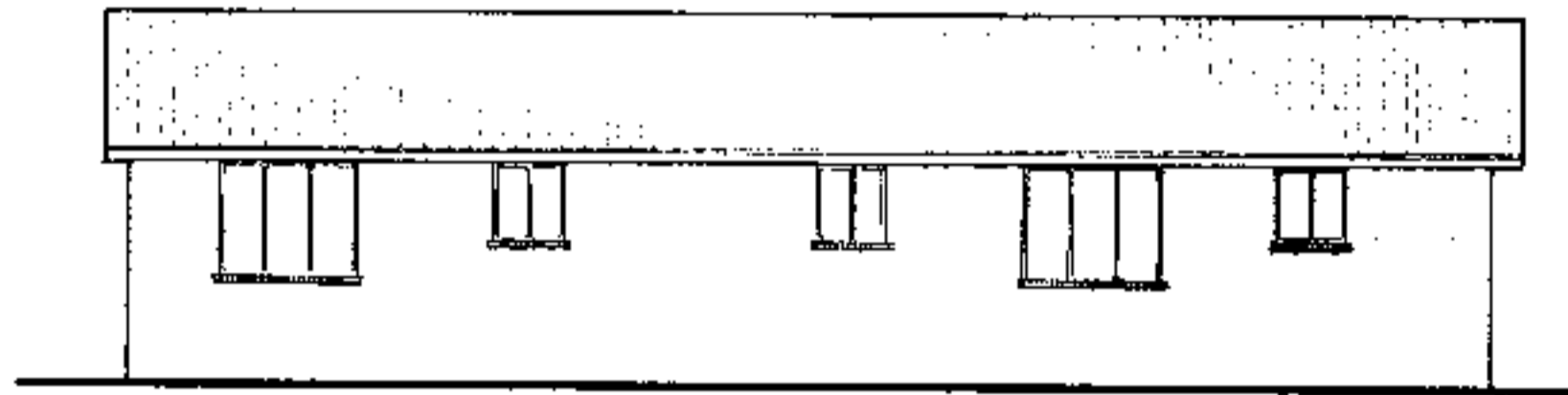
Center for Accessible Housing
School of Design
NCSU
Box 8613
Raleigh, NC 27695-8613
919.515.3082 voice/TDD
919.515.3023 fax

Accessible House Plan # GA
Adapted from NC Collection Plan # GA
North Carolina Cooperative Extension Service
NCSU Home Economics - Housing
Box 7605
Raleigh, NC 27695-7605
US Department of Agriculture, Cooperating

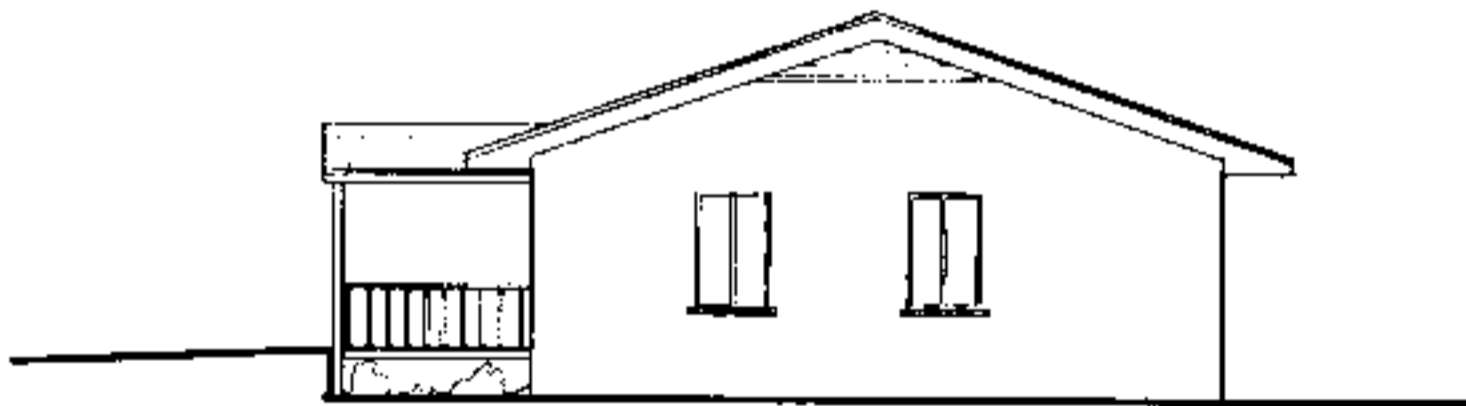
PLAN DATA
Sheet 3 of 16
Date May 95



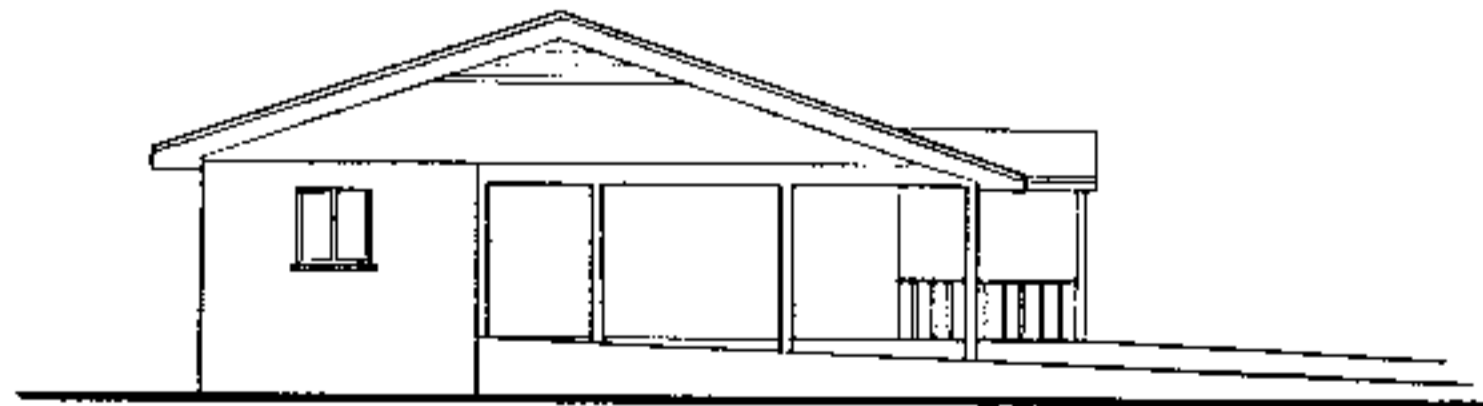
FRONT ELEVATION
1/8" = 1'-0"



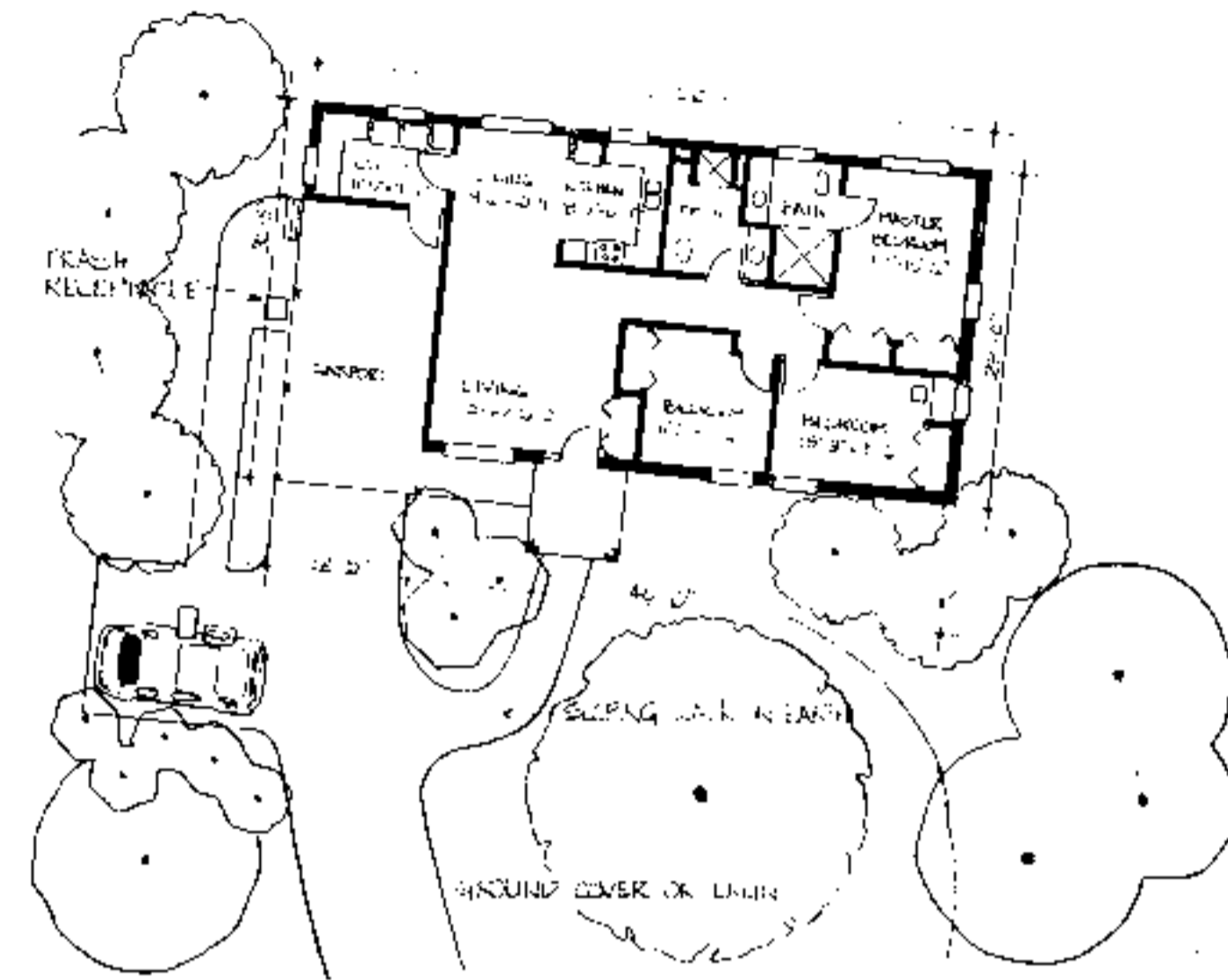
REAR ELEVATION
1/8" = 1'-0"



RIGHT SIDE ELEVATION
1/8" = 1'-0"



LEFT SIDE ELEVATION
1/8" = 1'-0"



SITE PLAN
1" = 15'-0"

Site Plan Notes

- When siting house and designing exterior walkways, consider topography, existing vegetation, solar orientation, and drainage.
- Eliminate the need for a ramp or limit its length and slope by placing the foundation as close to the ground as possible.
- Create attractive accessible entrances utilizing earthwork and site grading. Short wood framed bridges spanning from the elevated floor of the house to an uphill site location eliminates the need for special drainage, waterproofing and ventilation measures. On flatter sites, the bridge solution is possible by building an earth berm and retaining wall with a sloped walk.
- Locate walkways to provide convenient access to the parking area, house entrances, outside sitting area, mail/newspaper delivery area, and trash/recycling receptacles. Provide 1/2 inch raised edge on the side of walkways to prevent stroller or wheelchairs from rolling off accidentally.
- Create attractive enclosure for trash/recycling containers, that would also prevent them from blowing over or being disturbed by animals.
- Provide raised beds for gardening, an outside entertaining area and a recreational/play area. Locate raised beds/vegetable/flower near walkways, entrances and seating areas to maximize enjoyment, while facilitating ease of maintenance.
- When designing outside features, such as ramps, railings, or raised beds, use similar architectural details, colors, and building materials as in the (exterior) residence.
- Consider minimizing lawn space, or replacing it entirely with ground cover or mulch to reduce maintenance.
- Select plants which are appropriate for the soil and climate, such as indigenous species, to reduce maintenance. Include a variety of species of ground cover, and size and species of shrubbery to improve the ecological balance and wild life habitat.
- Choose plants which will mature at the desired height and provide year-round interest in views both outside and from within the house.
- Use multisense plants (those with interesting color, textures, fragrance, or edible part) and plants which attract birds and butterflies to maximize landscape enjoyment without increasing maintenance.

DISCLAIMER These plans are supplements to plans obtained by the NC Cooperative Extension Service. They are intended to improve access for people with mobility impairments and are provided for information purposes only. It is the responsibility of the contractor and owner to comply with all the applicable federal, state and local codes, ordinances and regulations in the construction of the house. Modifications to these plans will be needed to meet special individual needs of people with disabilities and may also be necessary to comply with specific requirements for energy codes, wind, seismic, snow or other special loading conditions. This set must be used in conjunction with the Extension Service plans and all dimensions notes and recommended details must be co-ordinated with the original set and verified in the field by the owner and contractor. For information on product manufacturers contact the Center for Accessible Housing.

BUILDING DATA	
# Bedrooms	3
Square Footage: heated	1443
storage/carport	375
porch	64
total	1882

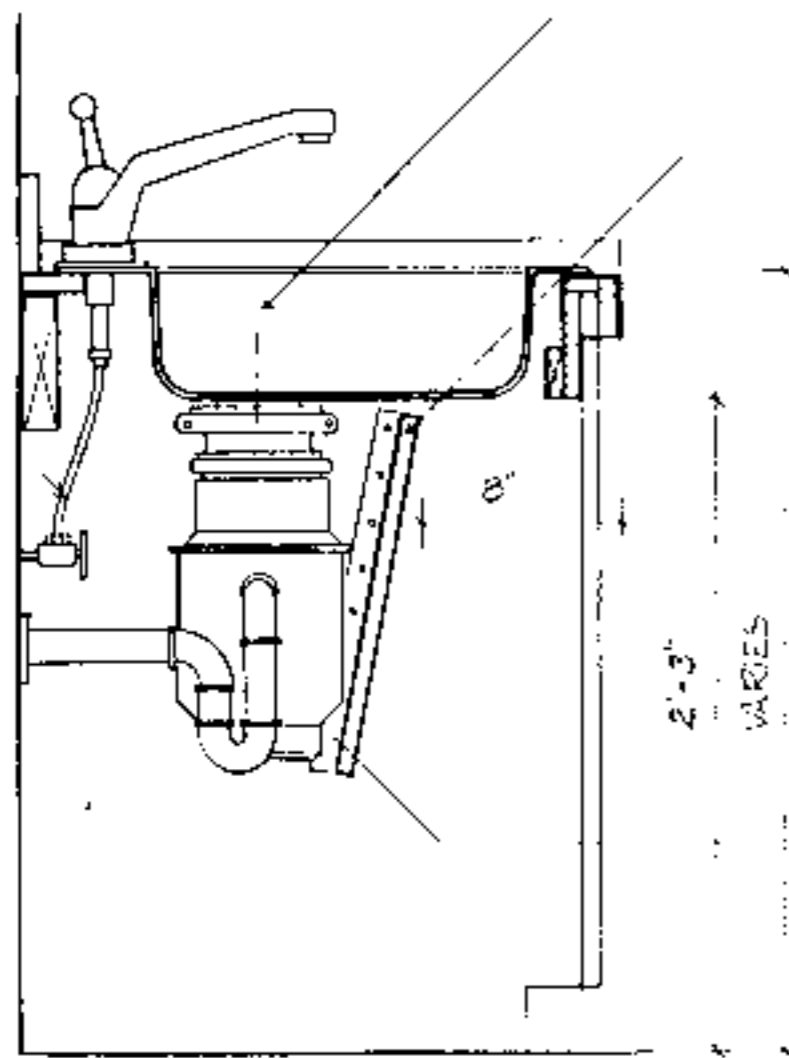
PLAN DATA
Adapted by: C. Sanchez
Drawn by: C. Humkey
Approved by: R. Mace

Center for Accessible Housing
School of Design
NCSU
Box 8613
Raleigh, NC 27695-8613
919.515.3082 voice/TDD
919.515.3023 fax

Accessible House Plan # 608
Adapted from NC Collection Plan # 6
North Carolina Cooperative Extension Service
NCSU Home Economics - Housing
Box 7605
Raleigh, NC 27695-7605
US Department of Agriculture, Composting

PLAN DATA
Sheet 4 of 6
Date May 93

FLEXIBLE SUPPLY PIPES



KOEN SINK E-2522 4 HL/HR

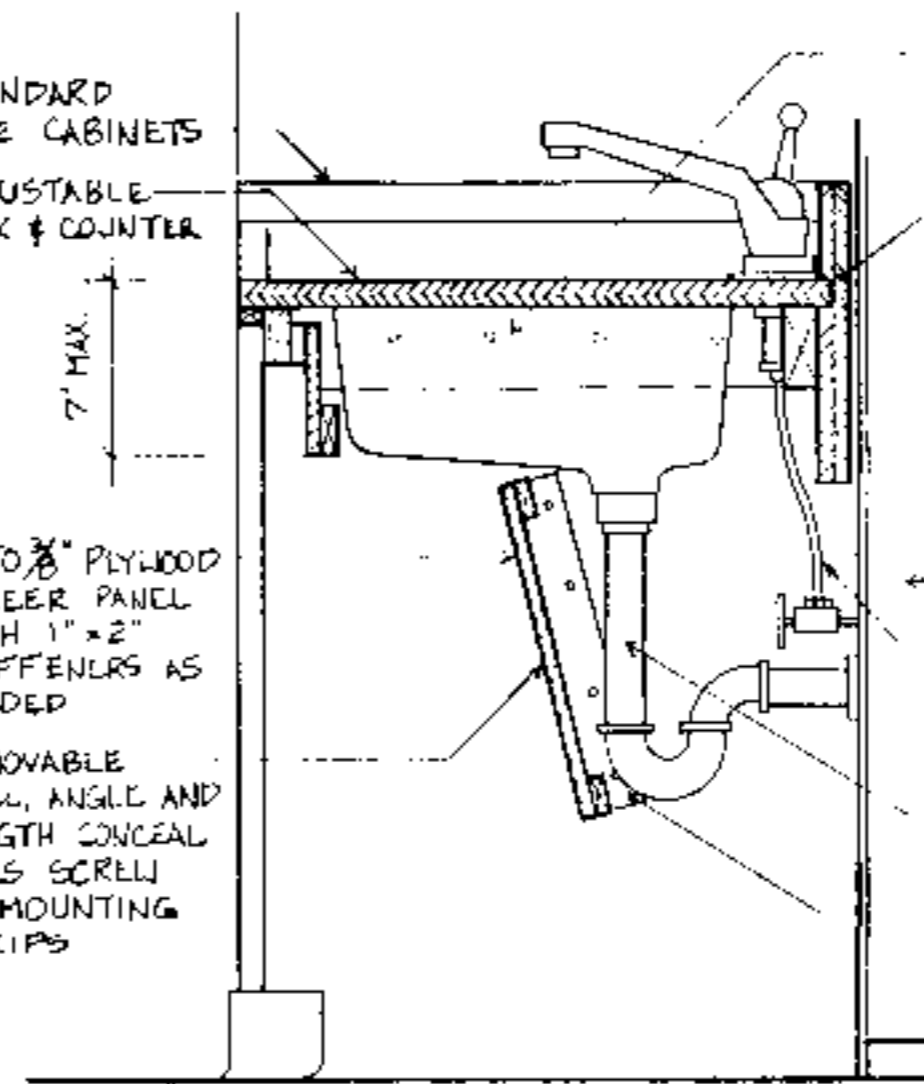
PIPE PROTECTION PANEL
1/4" TO 3/8" PLYWOOD
VENEER PANEL

1" x 2" MOUNTING STRIPS
AT CABINET BEYOND

TYPICAL SECTION AT GARBAGE DISPOSAL ENCLOSURE

1/2" = 1'-0"

STANDARD
BASE CABINETS
ADJUSTABLE
SINK & COUNTER



1/4" TO 3/8" PLYWOOD
VENEER PANEL
WITH 1" x 2"
STIFFENERS AS
NEEDED

REMOVABLE
PANEL, ANGLE AND
LENGTH CONCEAL
PIPS SCREW
TO MOUNTING
STRIPS

MOVABLE WOOD BLOCK
SUPPORT AT
ADJACENT CABINETS

3/4" PLYWOOD WITH
PLASTIC LAMINATE

STUD KNEE WALL
FLEXIBLE SUPPLY PIPE

TAIL PIECE WITH
SLIP JOINT
1" x 2" MOUNTING STRIPS
AT CABINET BEYOND

TYPICAL ADJUSTABLE SINK & COUNTER DETAIL

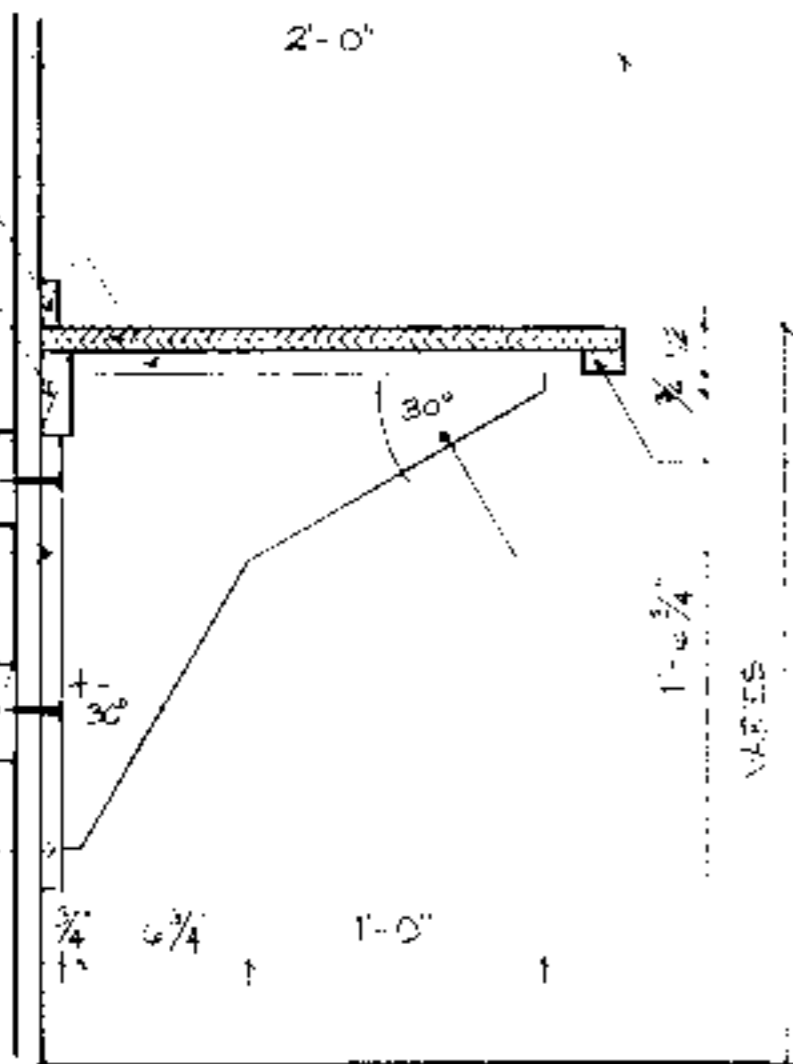
1/2" = 1'-0"

1" x 4" FLANGE
3/4" PLYWOOD WITH
PLASTIC LAMINATE
1" x 2" BACKSPLASH
2" x 4"

SOLID WOOD
STRUCTURAL BRACKET
BETWEEN STUDS AT
BRACKETS AS NECESSARY

BRACKET FLANGE
SCREWED, NAILED OR
BOLTED TO BLOCK OR
STUDS AS NECESSARY
TO SUPPORT ALL LOADS

1" x 4" SOLID WOOD
FLANGE ROUTED,
LET-IN GLUED AND
NAILED TO PLYWOOD



1" x 2"

3/4" KIRCH VENEER PLYWOOD
WITH 1/4" x 3/4" SOLID WOOD
EDGE BAN LET-IN, GLUED
AND NAILED

TYPICAL SECTION - COUNTER SUPPORT BRACKET

1/2" = 1'-0"

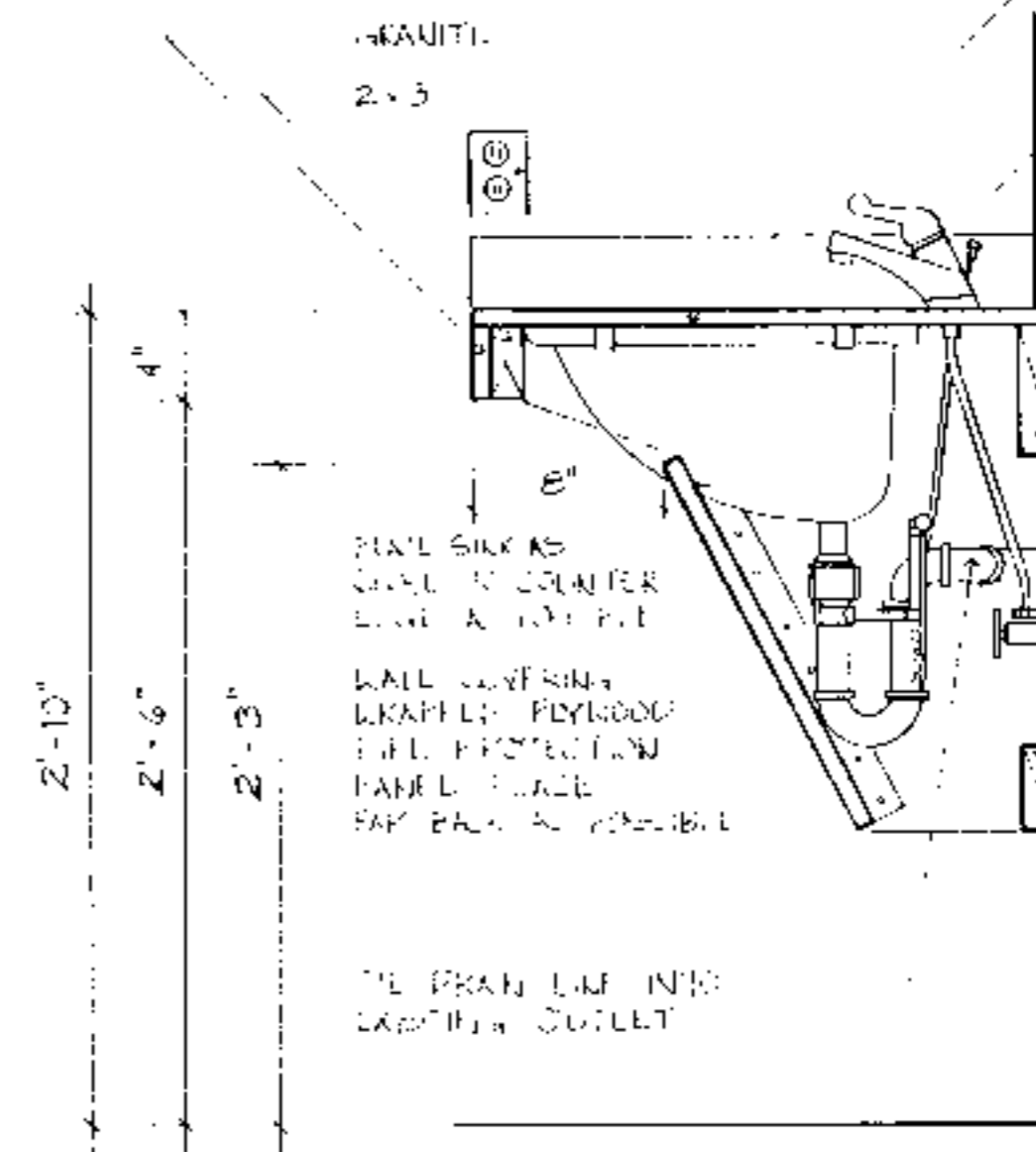
NEW RECEPTACLE
GRANITE COUNTERTOP

CUT OUT PIPE
PROTECTION PANEL
AROUND SINK FLANGE

2" x 6"

CONTINUOUS WOOD
SUPPORT BOLTED
OR SCREWED TO
METAL STUDS

2" x 4"



GRANITE
2" x 3"

INSTALL SINK AS
CALL FOR COUNTER
EDGE AND SET-UP

WALL COVERING
WRAP UP PLYWOOD
PIPE PROTECTION
PANEL FLANGE
FAR BACK AS POSSIBLE

THE BRAN LINE INTO
CLOSET OR OUTLET

TYPICAL SECTION THROUGH BATHROOM COUNTER AND SINK

1/2" = 1'-0"

DISCLAIMER These plans are supplements to plans offered by the NC Cooperative Extension Service. They are intended to improve access for people with mobility impairments and are provided for information purposes only. It is the responsibility of the contractor and owner to comply with all applicable federal, state and local codes, ordinances and regulations in the construction of the house. Modifications to these plans will be needed to meet special individual needs of people with disabilities and may also be necessary to comply with specific requirements for energy codes, and seismic, snow or other special loading conditions. The set must be used in conjunction with the Extension Service plans and all dimensions notes and recommended details must be coordinated with the original set and verified in the field by the owner and contractor. For information on product manufacturers contact the Center for Accessible Housing.

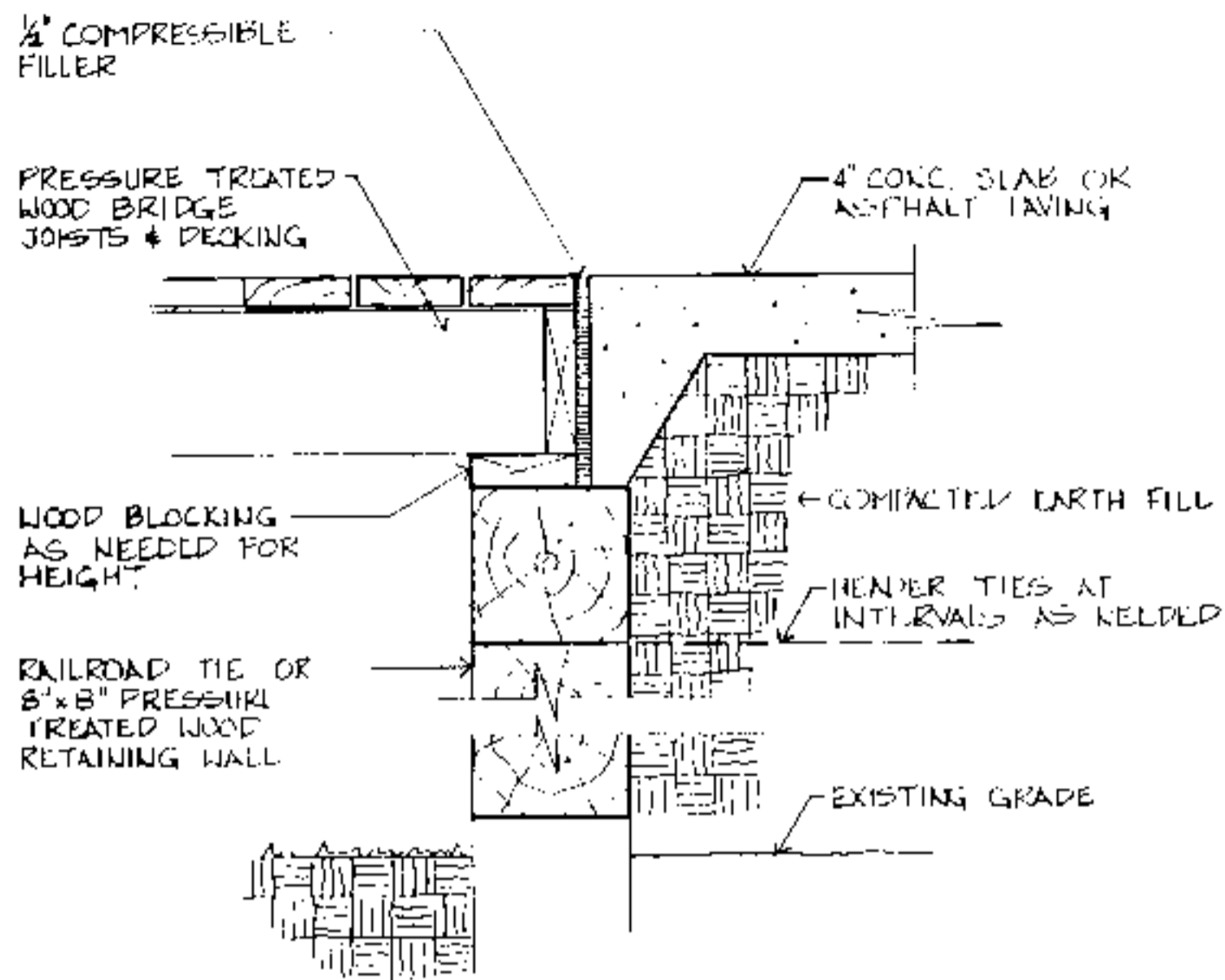
BUILDING DATA	
# Bedrooms	_____
Square Footage: heated	_____
storage/corridor	_____
porch	_____
total	_____

PLAN DATA	
Adapted by:	C. Sanchez
Drawn by:	C. Humkey
Approved by:	R. Moore

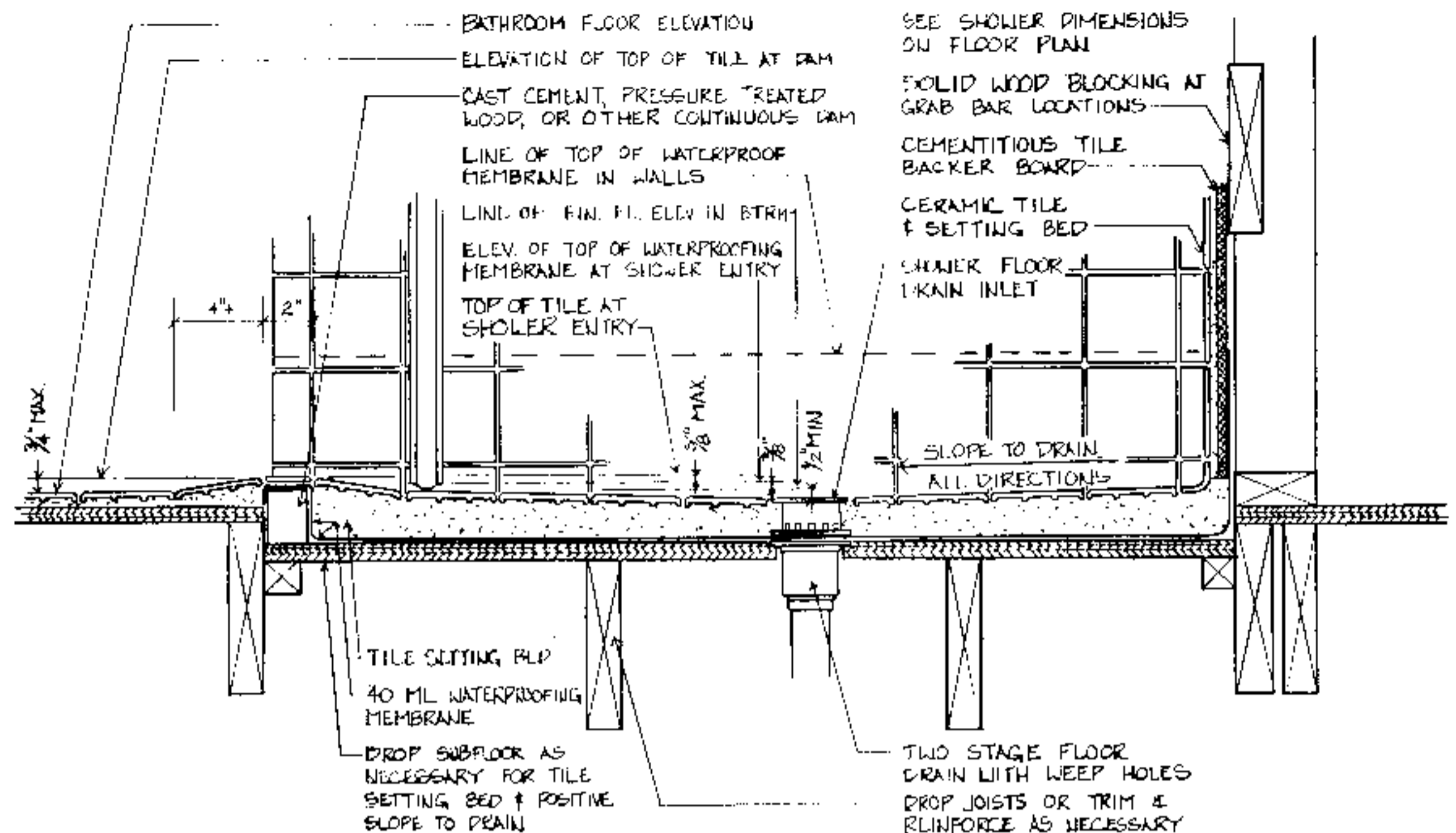
Center for Accessible Housing
School of Design
NCSU
Box 8613
Raleigh, NC 27695-8613
919.515.3082 voice/TDD
919.515.3023 fax

Accessible House Plan # _____
Adapted from NC Collection Plan # _____
North Carolina Cooperative Extension Service
NCSU Home Economics - Housing
Box 7605
Raleigh, NC 27695-7605
US Department of Agriculture, Cooperating

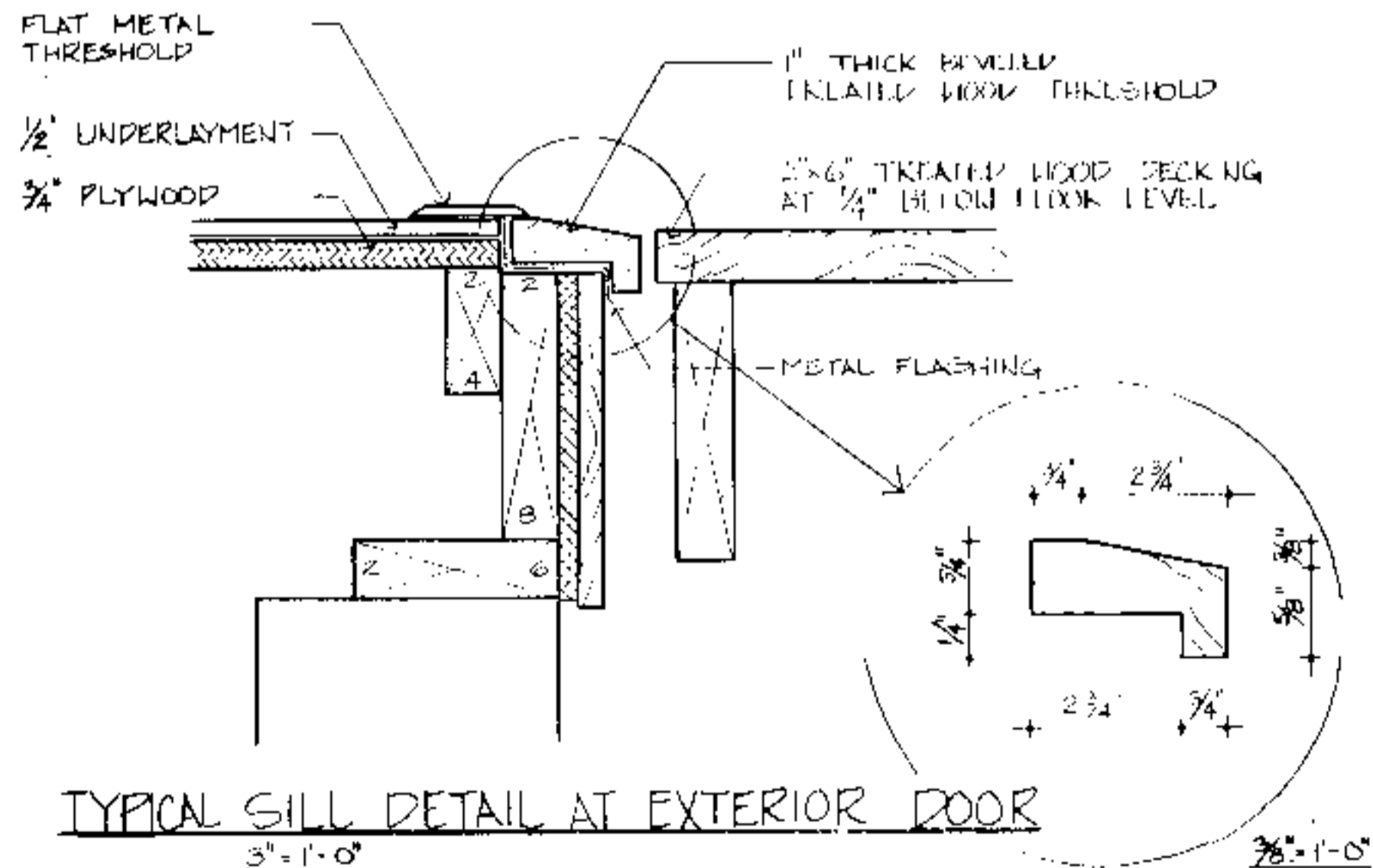
PLAN DATA	
Sheet	5 of 6
Date	May 92



TYPICAL BRIDGE END DETAIL
1/2" = 1'-0"



TYPICAL ROLL-IN SHOWER FLOOR & DRAIN DETAIL AT WOOD FRAME CONSTRUCTION
3" = 1'-0"



TYPICAL SILL DETAIL AT EXTERIOR DOOR
3" = 1'-0"

DISCLAIMER These plans are supplements to plans offered by the NC Cooperative Extension Service. They are intended to improve access for people with mobility impairments and are provided for information purposes only. It is the responsibility of the contractor and owner to comply with all the applicable federal, state and local codes, ordinances and regulations in the construction of the house. Modifications to these plans will be needed to meet special individual needs of people with disabilities and may also be necessary to comply with specific requirements for energy codes, wind, seismic, snow or other special loading conditions. This set must be used in conjunction with the Extension Service plans and all dimensions, notes and recommended details must be co-ordinated with the original set and verified in the field by the owner and contractor. For information on product manufacturers contact the Center for Accessible Housing.

BUILDING DATA	
# Bedrooms	_____
Square Footage: heated	_____
storage/corper	_____
porch	_____
total	_____

PLAN DATA	
Adapted by:	C. Sanchez
Drawn by:	C. Humkey
Approved by:	R. Mace

Center for Accessible Housing
School of Design
NCSU
Box 8613
Raleigh, NC 27695-8613
919.515.3082 voice/TDD
919.515.3023 fax

Accessible House Plan # _____
Adapted from NC Collection Plan # _____
North Carolina Cooperative Extension Service
NCSU Home Economics - Housing
Box 7605
Raleigh, NC 27695-7605
US Department of Agriculture, Cooperating

PLAN	DATA
Sheet	6 of 6
Date	May 93