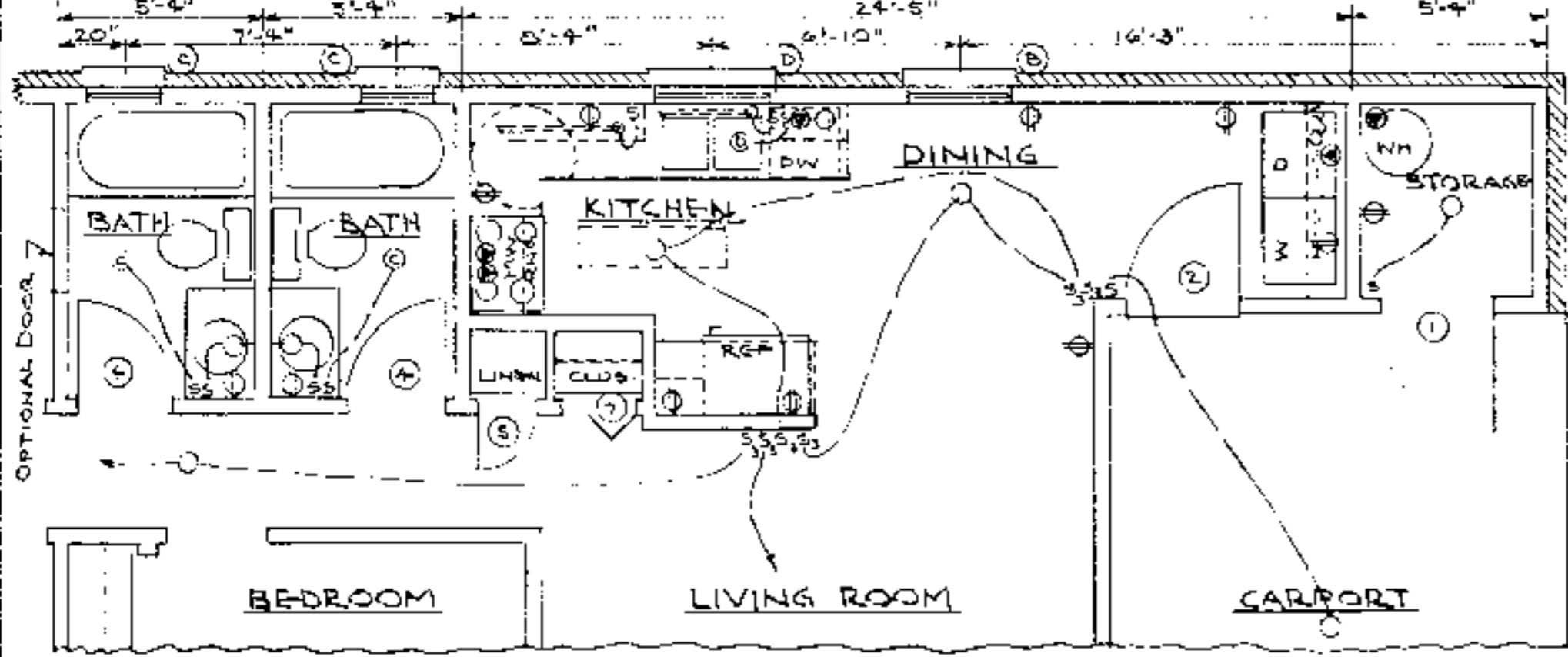
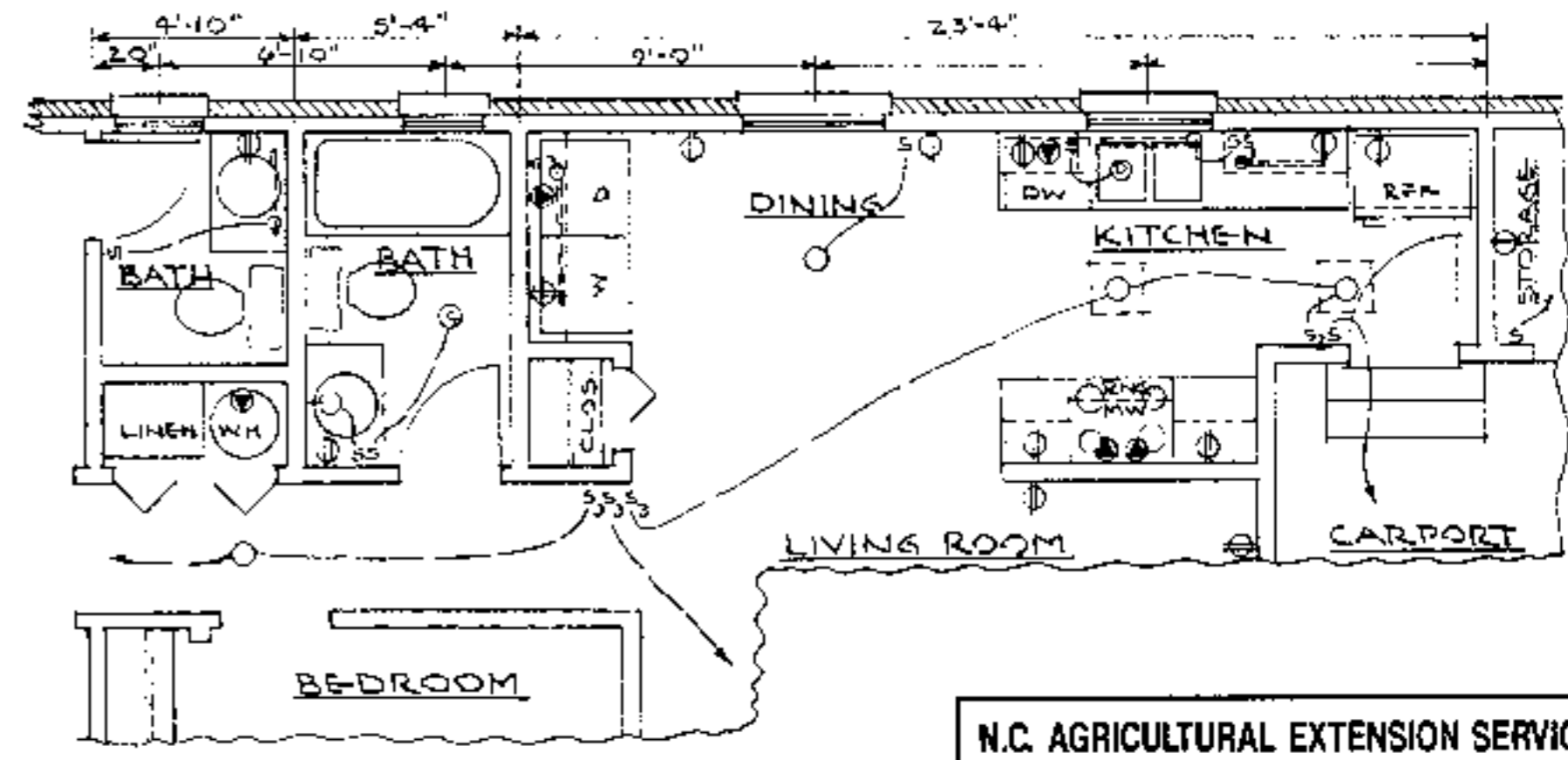


BUILDING DATA	
SQUARE FOOTAGE:	
HEATED:	1032
CARPORT:	223
TOTAL	1255
ESTIMATED HEATING LOAD:	
16,600 BTU/HR @ 60°F TO	
ESTIMATED COOLING LOAD:	
20,700 BTU/HR = 2 TONS	

SUGGESTED ORIENTATION
FLOOR PLAN "A" - SCALE: 1/8" = 1'-0"



FLOOR PLAN OPTION "A-1"
 SCALE: 1/4" = 1'-0"
 (BEDROOMS SAME AS PLAN "A")

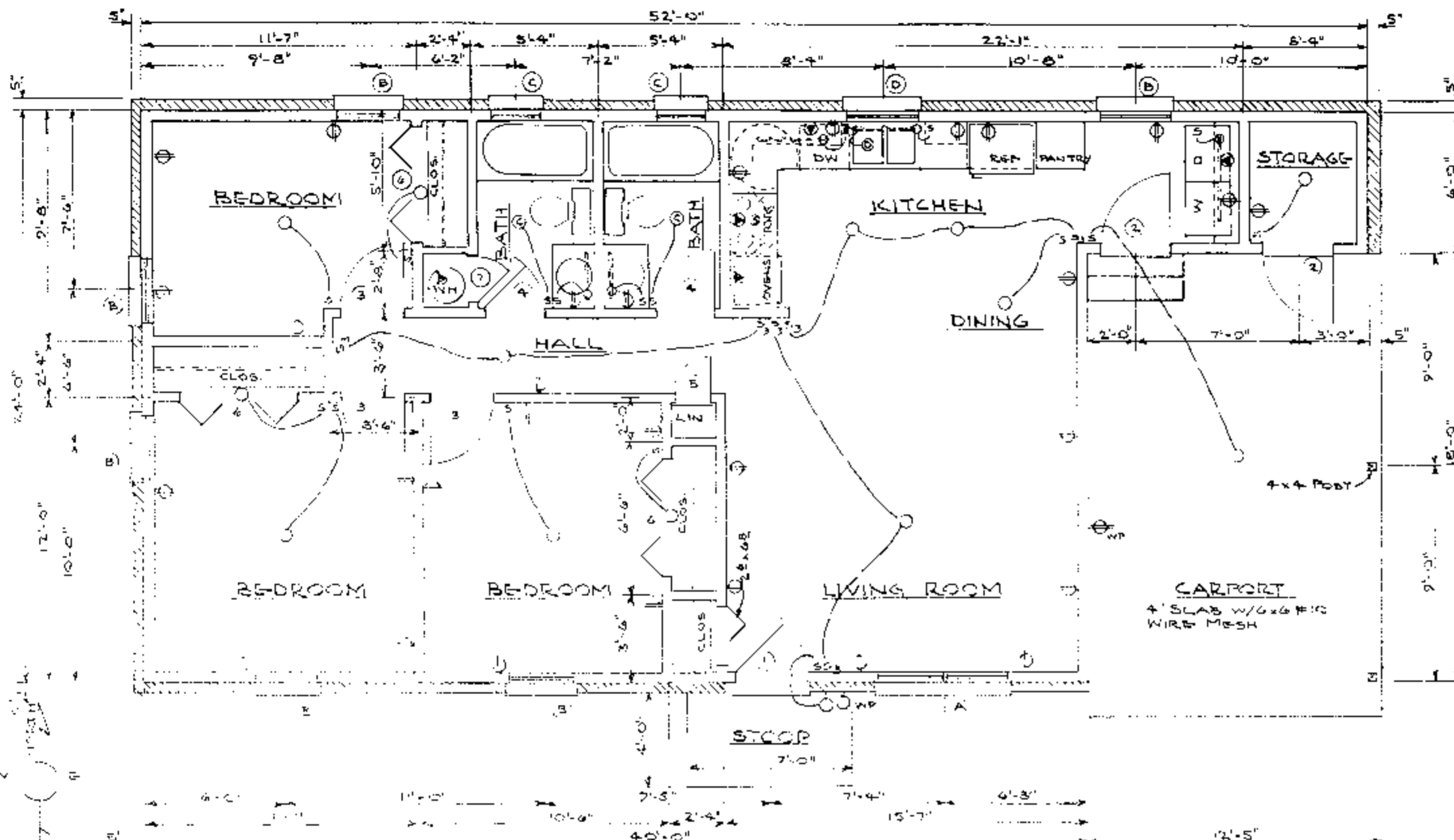


FLOOR PLAN OPTION "A-2"
 SCALE: 1/4" = 1'-0"
 (BEDROOMS SAME AS PLAN "A")

N.C. AGRICULTURAL EXTENSION SERVICE	
HOME ECONOMICS — HOUSING	
N.C. State University, Raleigh, North Carolina and U.S. Department of Agriculture, Cooperating	
3-BEDROOM HOUSE W/CARPORT	1032 Sq. Ft. HTD.
REV. OF NC 90/97	N.C. 4 '86 Sheet 1 of 3



Helping people put knowledge to work.

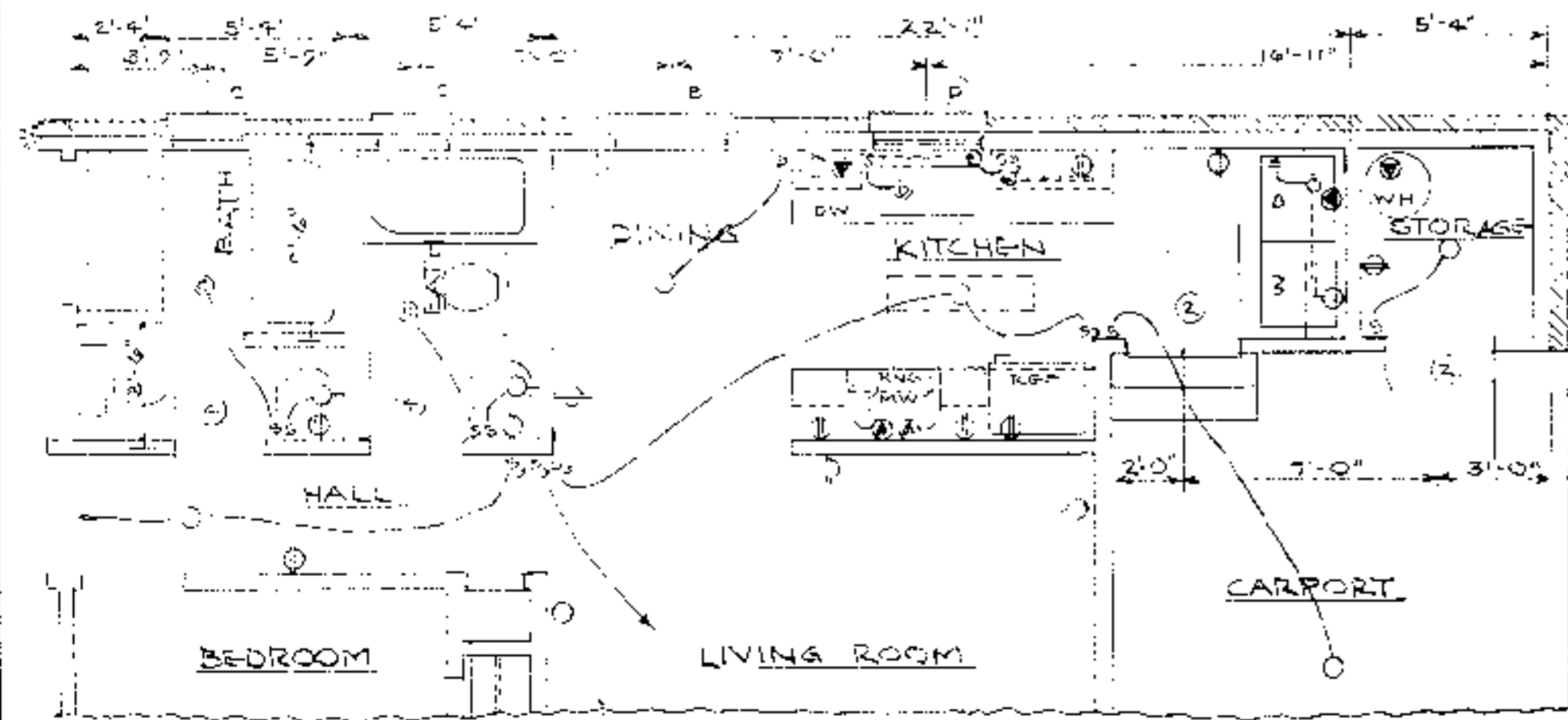


CONSTRUCTION CHECKLIST

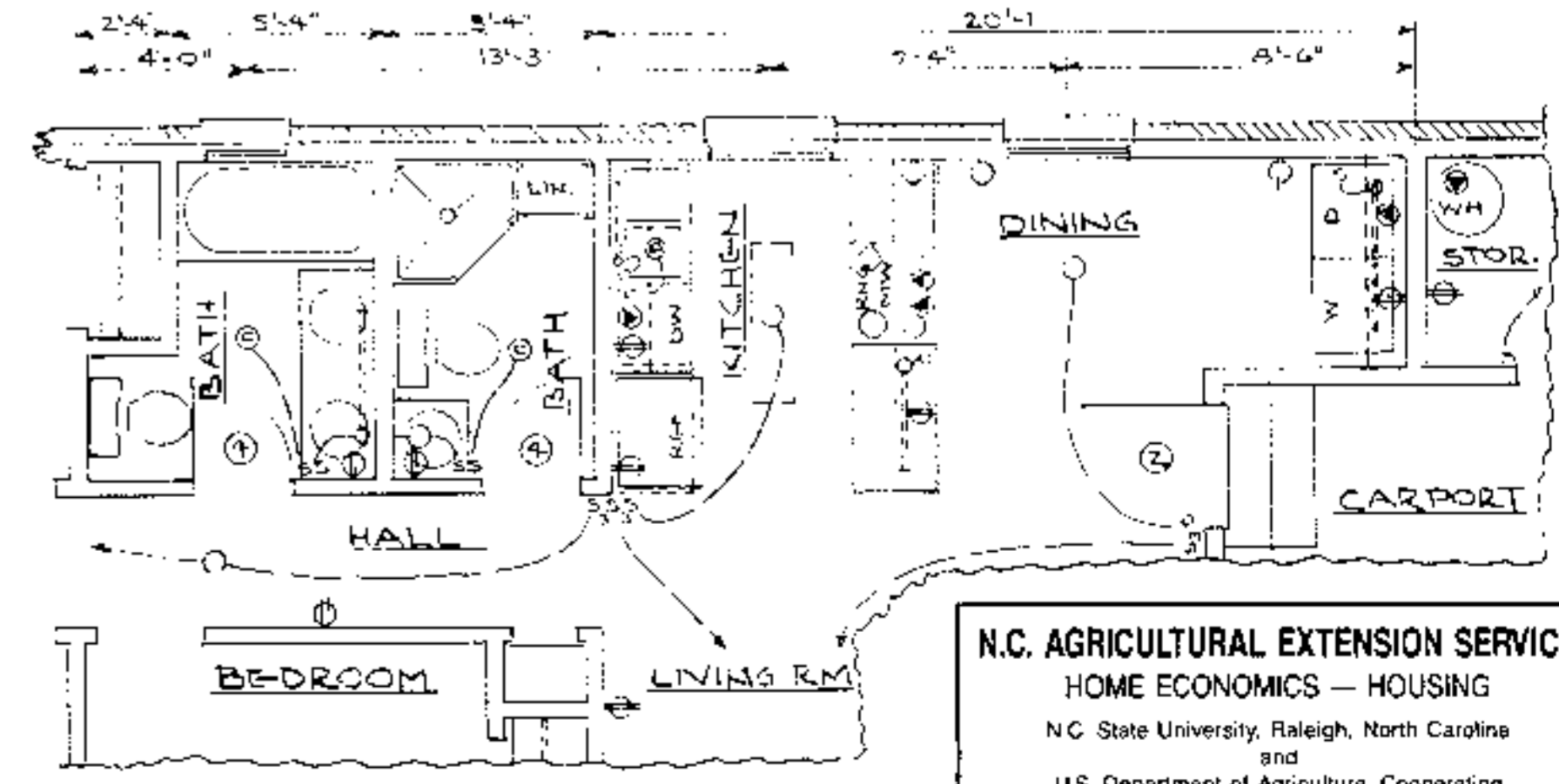
- 1- CONSULT LOCAL BUILDING CODES AND LENDING AGENCIES BEFORE BEGINNING CONSTRUCTION (ROOF FRAMING SHOWN IS FOR 30 PSF SNOW LOAD).
- 2- ACTUAL FOOTING SIZE & REINFORCING DEPENDS ON LOCAL SOIL CONDITIONS.
- 3- ADEQUATELY NAIL & ANCHOR JOINTS
- 4- SHEATH CORNERS WITH 1/2" PLYWOOD OR HIGH DENSITY FIBERBOARD OR USE DIAGONAL BRACING.
- 5- USE EXTERIOR GLUE PLYWOOD WHEREVER IT MAY BE WETTED DURING OR AFTER CONSTRUCTION.
- 6- PRESSURE TREAT ALL WOOD WITH GROUND CONTACT AND PROVIDE OTHER NEEDED TERMITE CONTROL.
- 7- R-VALUES MAY BE ADJUSTED TO LOCAL TEMPERATURES AND FUEL COSTS.
- 8- PROVIDE 1 SQ. FT. MIN. OF ATIC VENT OPENINGS PER 150 SQ. FT. OF CEILING AREA.
- 9- WEATHERIZE ALL OPENINGS & JOINTS.



SUGGESTED ORIENTATION
FLOOR PLAN "B" - SCALE: 1/4" = 1'-0"

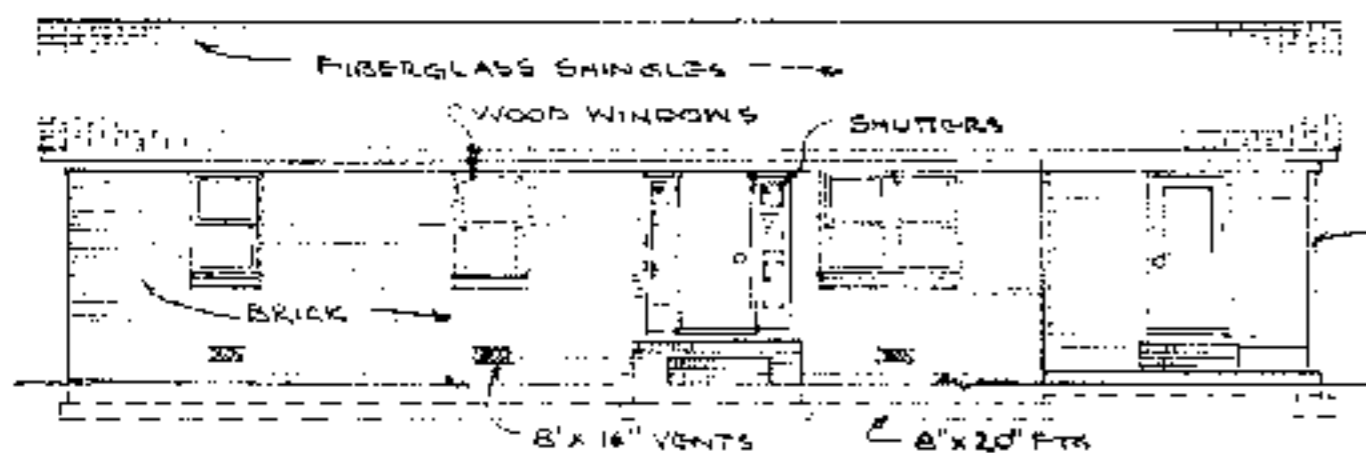


FLOOR PLAN OPTION "B-1"
SCALE: 1/4" = 1'-0"
(BEDROOMS SAME AS PLAN "B")

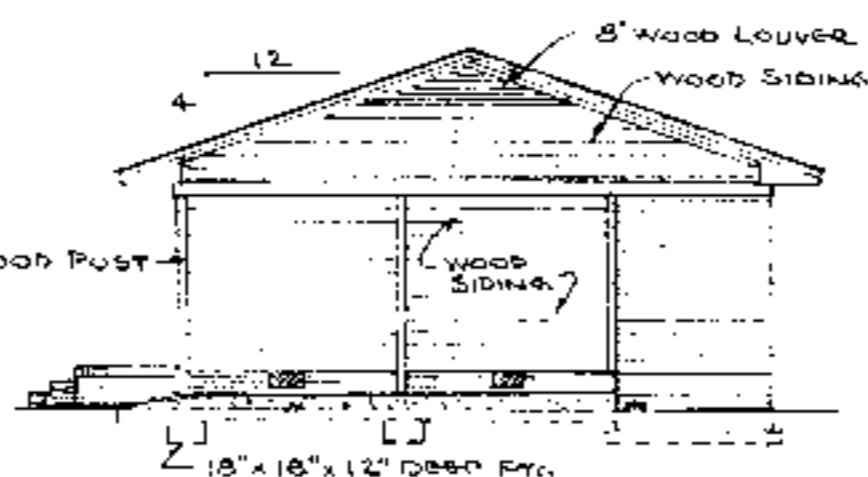


FLOOR PLAN OPTION "B-2"
SCALE: 1/4" = 1'-0"
(BEDROOMS SAME AS PLAN "B")

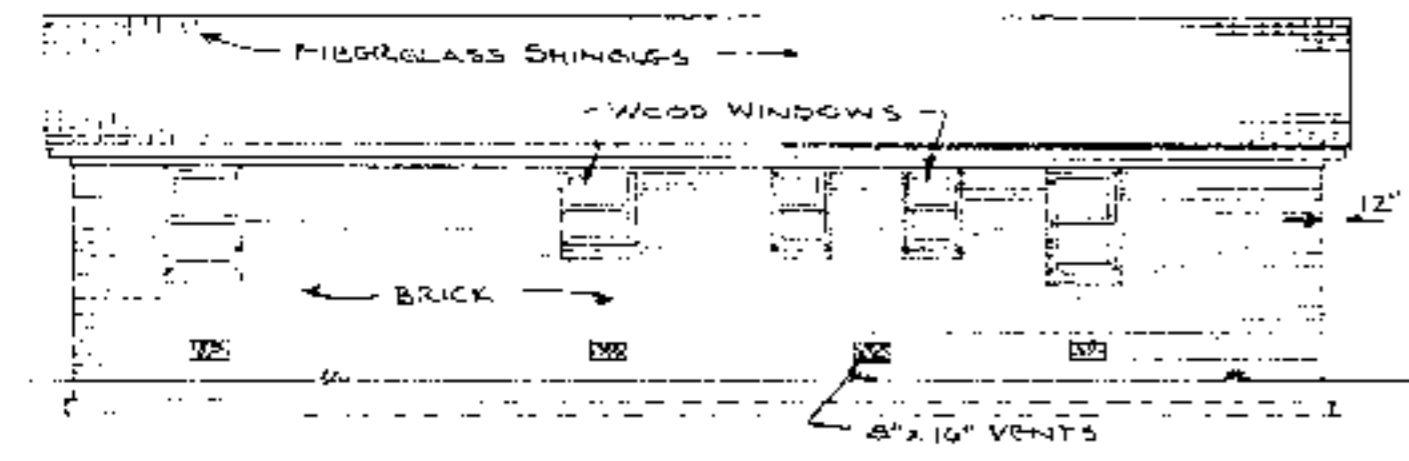
N.C. AGRICULTURAL EXTENSION SERVICE		
HOME ECONOMICS — HOUSING		
NC State University, Raleigh, North Carolina and U.S. Department of Agriculture, Cooperating		
3-BEDROOM HOUSE W/CARPORT		1032 Sq. Ft. NTD.
REV. OR NC 90/97	N.C. 4 '86	Sheet 2 of 3.



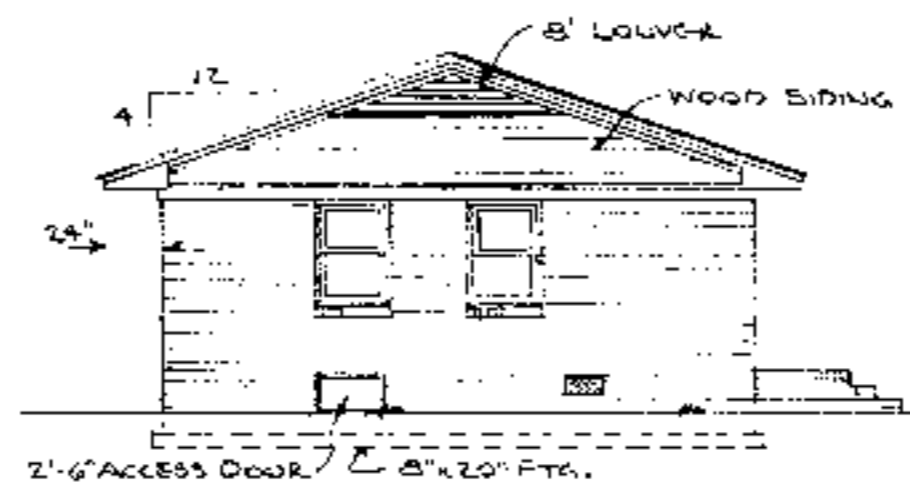
FRONT ELEVATION
SCALE: 1/8" = 1'-0"



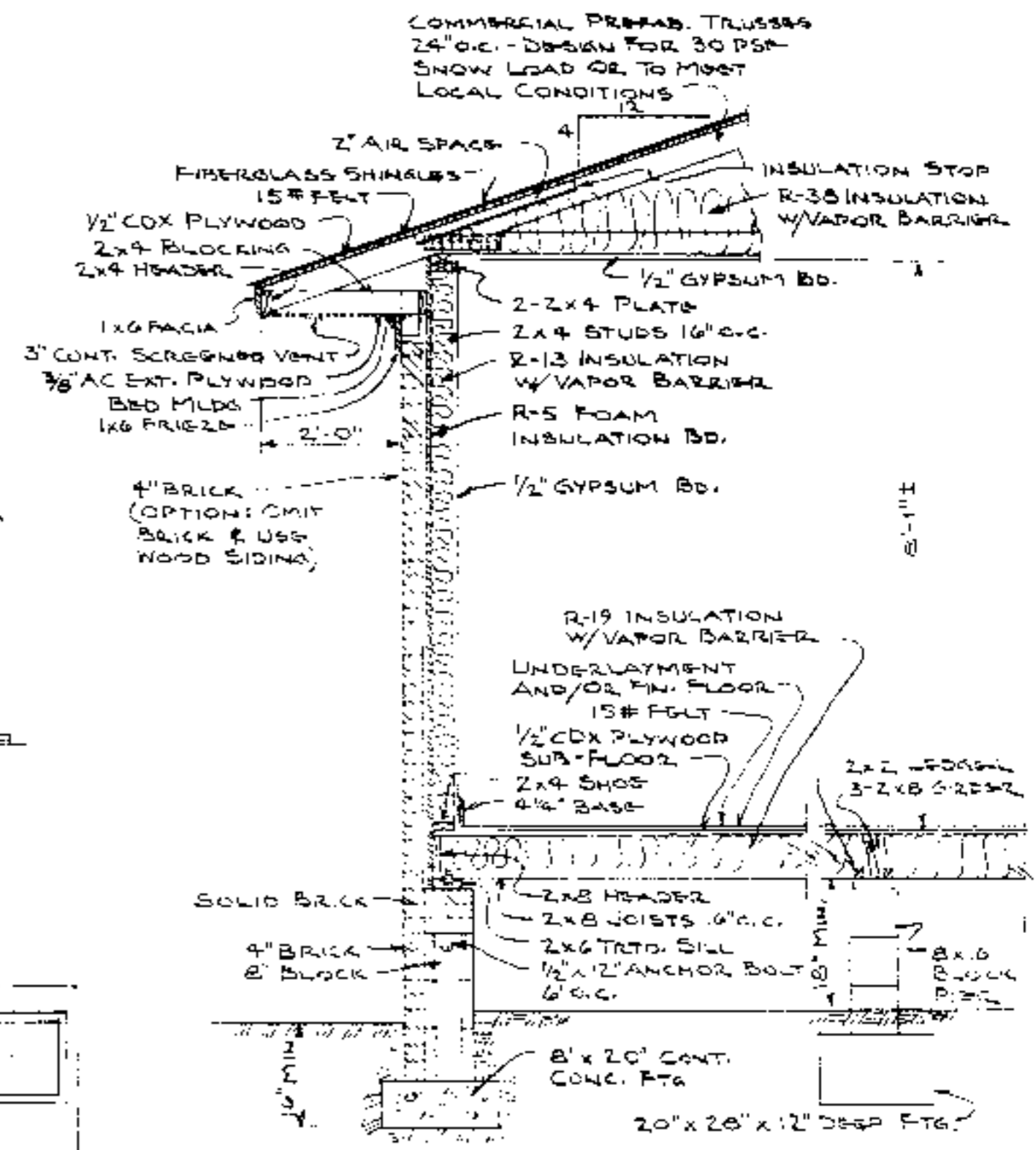
RIGHT SIDE ELEVATION
SCALE: 1/8" = 1'-0"



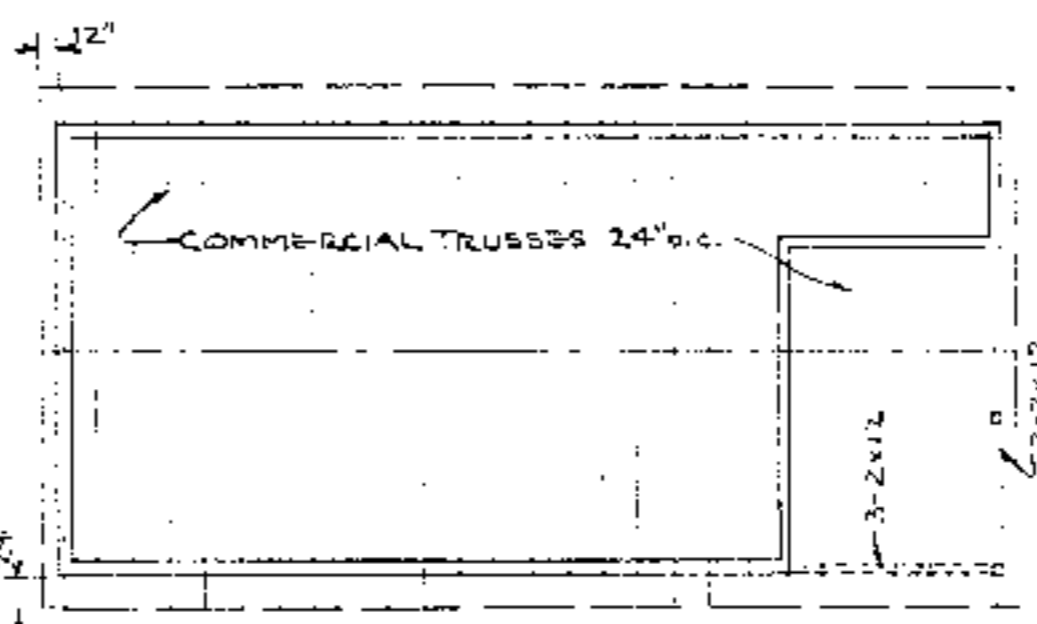
REAR ELEVATION
SCALE: 1/8" = 1'-0"



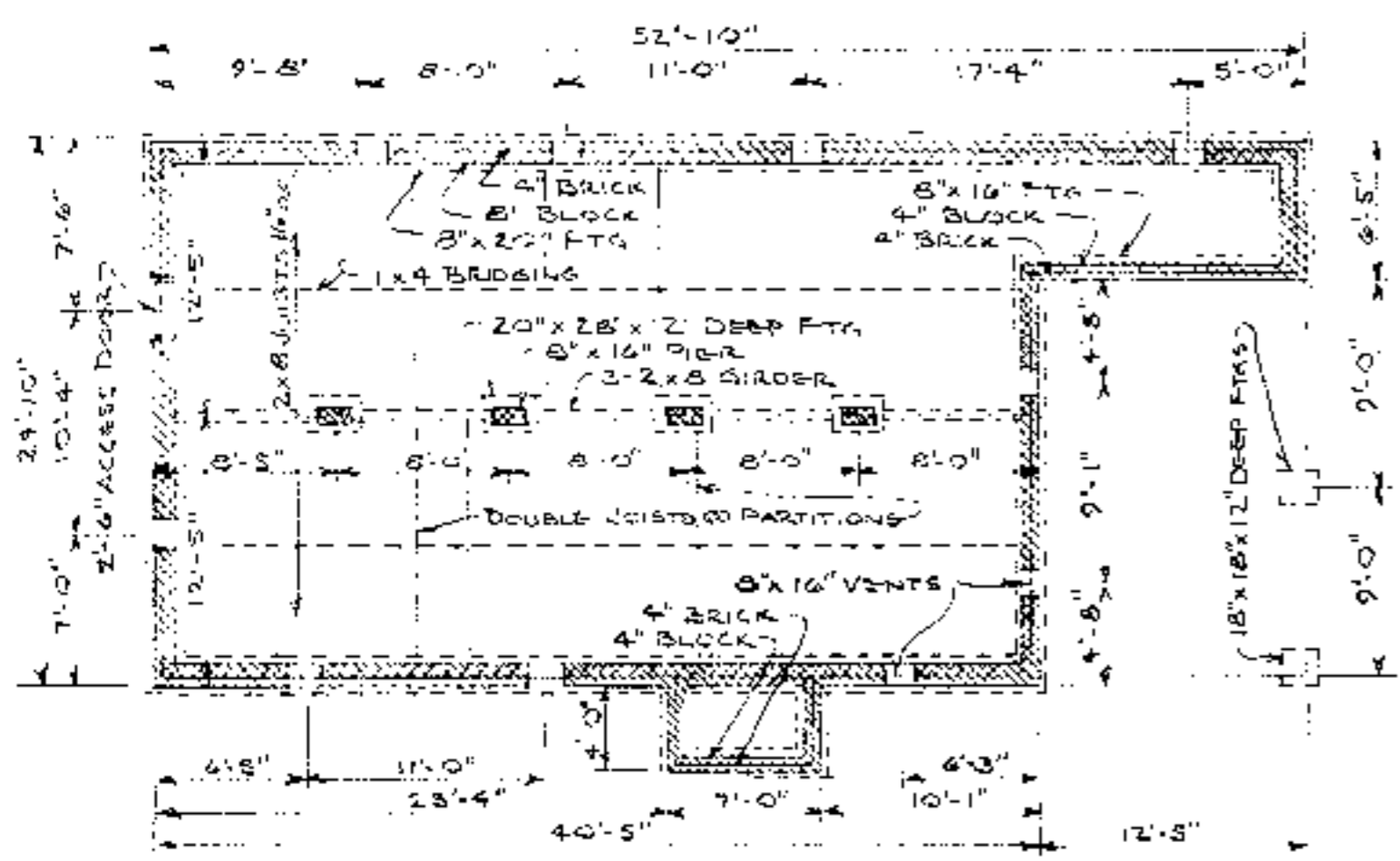
LEFT SIDE ELEVATION
SCALE: 1/8" = 1'-0"



TYPICAL WALL SECTION
SCALE: 1/2" = 1'-0"



ROOF FRAMING PLAN
NO SCALE



FOUNDATION PLAN
SCALE: 1/8" = 1'-0"

DOOR SCHEDULE			
MARK	SIZE	DESCRIPTION	No. REQ'D
①	32x68	1 3/4" EXT. SOLID CORE FLUSH	1
②	32x68	" " " " " " 1/2" GLASS	1
③	28x68	1 3/8" INT. HOLLOW CORE FLUSH	4
④	26x68	" " " " " " " "	2
⑤	12x68	" " " " " " " "	1
⑥	58x68	" " " " " " " " BIFOLD	3
⑦	20x68	" " " " " " " "	2

WINDOW SCHEDULE			
MARK	SIZE	DESCRIPTION	No. REQ'D
Ⓐ	2-28x42	DOUBLE HUNG, WOOD	1
Ⓑ	2-28x42	" " " " " " " "	6
Ⓒ	20x32	" " " " " " " "	2
Ⓓ	32x32	" " " " " " " "	1

ALL WINDOWS SHALL BE NWMA CERTIFIED, WITH DOUBLE GLAZING OR STORM SASH.

ELECTRICAL SYMBOLS	
SYMBOL	DESCRIPTION
S	SINGLE POLE SWITCH
S3	THREE WAY SWITCH
⊕	DUPLEX OUTLET
⊕WP	WEATHER-PROOF OUTLET
⊕	SPECIAL PURPOSE OUTLET
⊕	LIGHTING OUTLET
⊕	WALL BRACKET LIGHT
⊕	COMB. FAN, LIGHT, HEATER
⊕	FLG. STRIP IN SOFFIT, COVE, CABINET



N.C. AGRICULTURAL EXTENSION SERVICE
HOME ECONOMICS — HOUSING
N.C. State University, Raleigh, North Carolina
and
U.S. Department of Agriculture, Cooperating

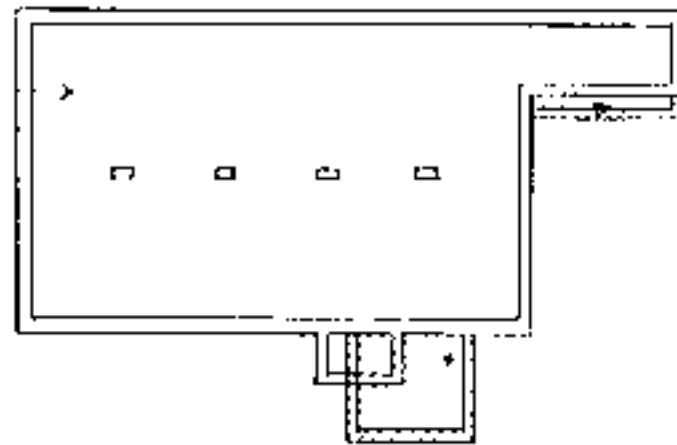
3-BEDROOM HOUSE
W/CARPOR

REV. OF NC 99/97

N.C. 4 '86

Sheet 3 of 3

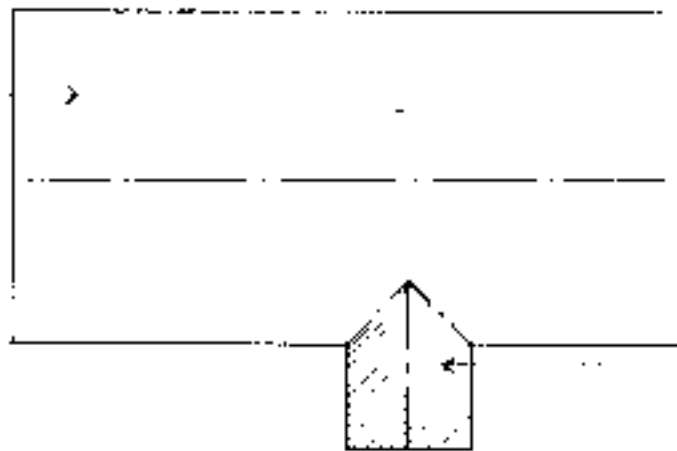
FOUNDATION PLAN
SEE ORIGINAL PLANS
FOR DIMENSIONS, NOTES, ETC.



AMENDED ACCESSIBLE
FOUNDATION PLAN AS
REQUIRED BY BUILDING CODE

KEY FOUNDATION PLAN
NO SCALE

ROOF PLAN
SEE ORIGINAL PLANS
FOR DIMENSIONS, NOTES, ETC.



AMENDED ACCESSIBLE
ROOF PLAN AS
REQUIRED BY BUILDING CODE

KEY ROOF FRAMING PLAN
NO SCALE

INFORMATION

Supplemental Accessible House Plan # 4A

Adapted from and to be used in conjunction with original plan # NC 4

SEE ORIGINAL PLANS FOR ALL WALL SECTIONS, INTERIOR ELEVATIONS, DETAILS, CONSTRUCTION
DETAILS, SCHEDULES AND MISCELLANEOUS INFORMATION.

DISCLAIMER These plans are supplements to plans offered by the NC Cooperative Extension Service. They are intended to improve access for people with mobility impairments and are provided for information purposes only. It is the responsibility of the contractor and owner to comply with all the applicable federal, state and local codes, ordinances and regulations in the construction of the house. Modifications to these plans will be needed to meet special individual needs of people with disabilities and may also be necessary to comply with specific requirements for energy codes, wind-seismic, snow or other special loading conditions. These plans must be used in conjunction with the Extension Service plans and all dimensions notes and recommended details must be co-ordinated with the original set and verified in the field by the owner and contractor. For information on product manufacturers contact the Center for Accessible Housing.

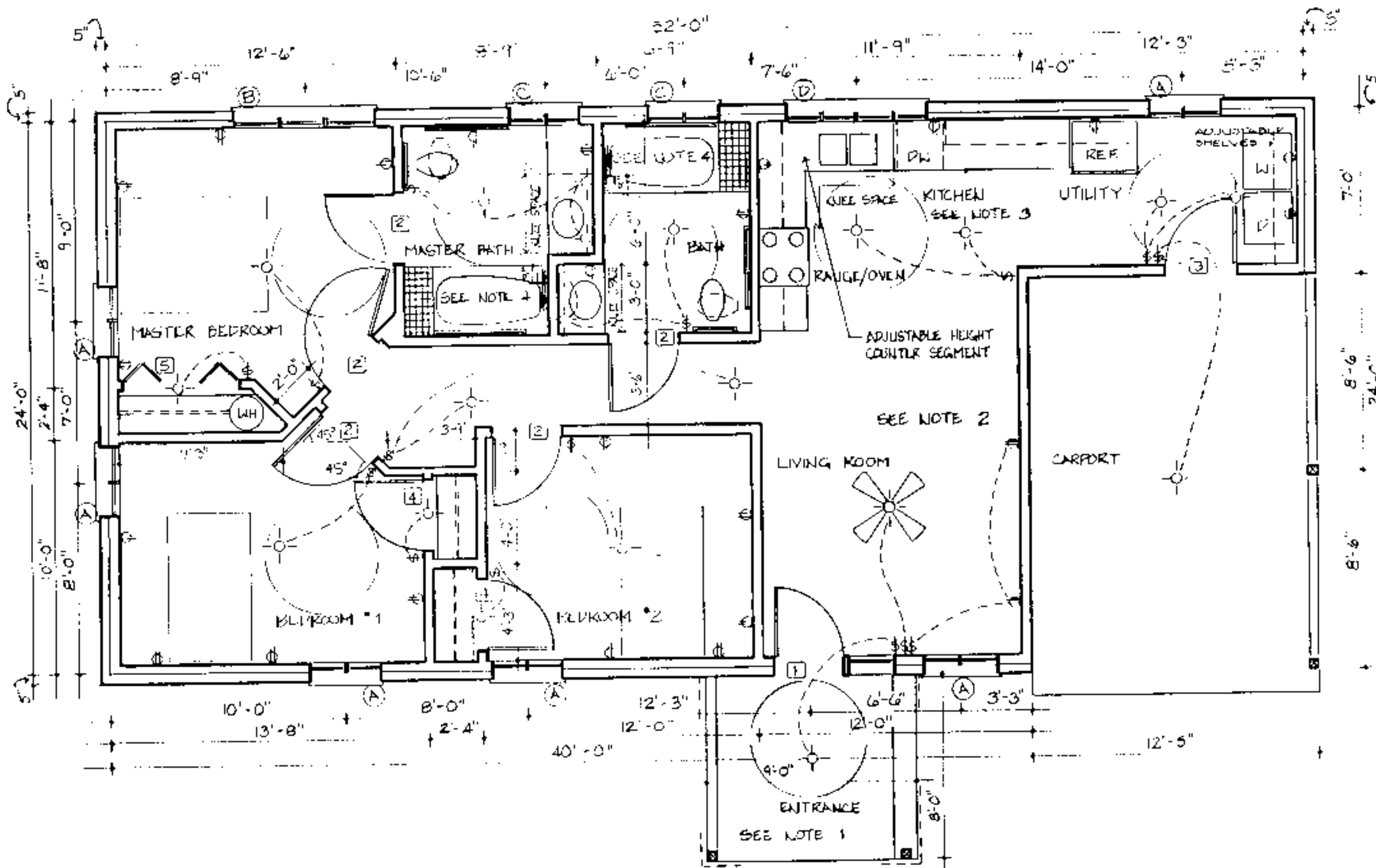
BUILDING DATA	
# Bedrooms	3
Square Footage: heated	1032
storage/carport	245
porch	42
total	1319

PLAN DATA
Adapted by: C. Sanchez
Drawn by: C. Humkey
Approved by: R. Mace

Center for Accessible Housing
School of Design
NCSU
Box 8613
Raleigh, NC 27695-8613
919.515.3082 voice/TDD
919.515.3023 fax

Accessible House Plan # 4A
Adapted from NC Collection Plan # 4
North Carolina Cooperative Extension Service
NCSU Home Economics - Housing
Box 7605
Raleigh, NC 27695-7605
US Department of Agriculture, Cooperating

PLAN DATA
Sheet 1 of 6
Date May 93



FLOOR PLAN
 $\frac{1}{4}'' = 1'-0''$

- Note 1. Entrance**
- Viewing window glass or sidelights or high/low peep hole viewer or extreme wide angle lens viewer for security
 - Level clear floor area both inside and outside of door to provide maneuvering space at doors
 - 36-inch wide doors
 - Maximum of 1/4-inch vertical change in level at thresholds and other changes in level
 - Lever handle on doors
 - 12-inch wide outside shelf for packages

- Note 2. General**
- Electrical receptacles are to be placed at easy to reach height; electrical outlets 18 inches above floor, light switches 38 inches above floor
 - Additional electrical outlets in bedrooms to accommodate assistive devices
 - Thermostats/controls 44 inches above the floor
 - Rocker light switches
 - 42-inch clearance in hallways, 32-inch width minimum clear opening width in doorways, 24-inch wide space on latchside of doors on pull side
 - Lever handle on doors. Auxiliary handles on doors for ease in closing. Loop type handles 30-36 inches above floor and 6 inches from hinge edge on pull side.
 - Window sill between 18 and 36 inches above the floor
 - Casement windows
 - Smooth dense floor coverings for easy maneuvering
 - Adjustable height closet rods and storage shelves from 3' 0" to 5' 6"

- Note 3. Kitchen**
- Counter segments elevation can be set at different heights from 30 to 36 inches.
 - Kneespace with pipe protection panel or base cabinets at key locations
 - Front mounted controls on the stove
 - Loop cabinet handles and drawer pulls
 - 5' diameter turning space
 - Lever handle faucet
 - Cabinet doors sliding or spring loaded hinges on cabinet doors
 - Cabinets with full extension pull out shelves
 - Lazy Susans
 - Side-by-side refrigerator/freezer
 - Adaptable removable base cabinets
- See sheet 5 for adjustable sink and counter detail, section at garbage disposal enclosure detail, and counter support bracket detail.

- Note 4. Bathrooms**
- Hand held shower head
 - Lever handle faucets
 - Offset controls in tub/shower
 - Open front lavatory with knees space with protection panel
 - 5' diameter turning space
 - Dual lever faucet controls permit easy manipulation of the flow of water and water temperature.
 - Reinforced walls to accommodate grab bars. Suggested grab bar locations are as required by ANSI. Actual location may need to meet individual needs. Full wall reinforcement, as specified, allows for any position or height to be accommodated.
- See sheets 5 & 6 for section at bathroom counter and sink detail, and typical suggested roll-in shower floor and drain detail at wood frame construction.

DISCLAIMER These plans are supplements to plans offered by the NC Cooperative Extension Service. They are intended to improve access for people with mobility impairments and are provided for information purposes only. It is the responsibility of the contractor and owner to comply with all applicable federal, state and local codes, ordinances and regulations in the construction of the house. Modifications to these plans will be needed to meet special individual needs of people with disabilities and may also be necessary to comply with specific requirements for energy codes, wind, seismic, snow or other special loading conditions. The architect is not responsible for the construction of the house. The contractor is responsible for the construction of the house. The architect is not responsible for the construction of the house. The contractor is responsible for the construction of the house. For information on product manufacturers contact the Center for Accessible Housing.

BUILDING DATA	
# Bedrooms	3
Square Footage: heated	1032
storage/corpor	243
porch	72
total	1327

PLAN DATA

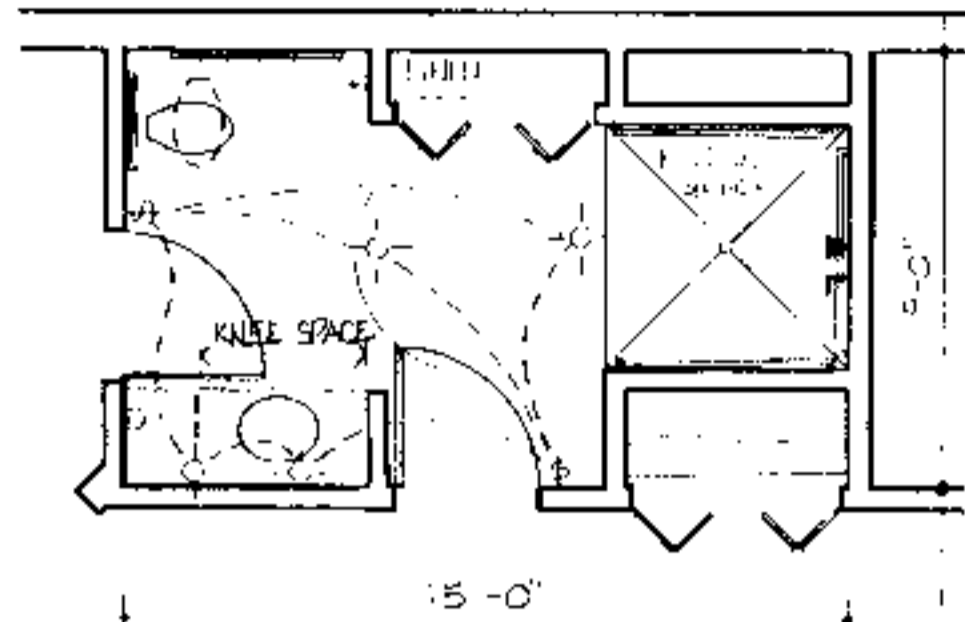
Adapted by: C. Sanchez
 Drawn by: C. Humkey
 Approved by: R. Mace

Center for Accessible Housing
 School of Design
 NCSU
 Box 8613
 Raleigh, NC 27695-8613
 919.515.3082 voice/TDD
 919.515.3023 fax

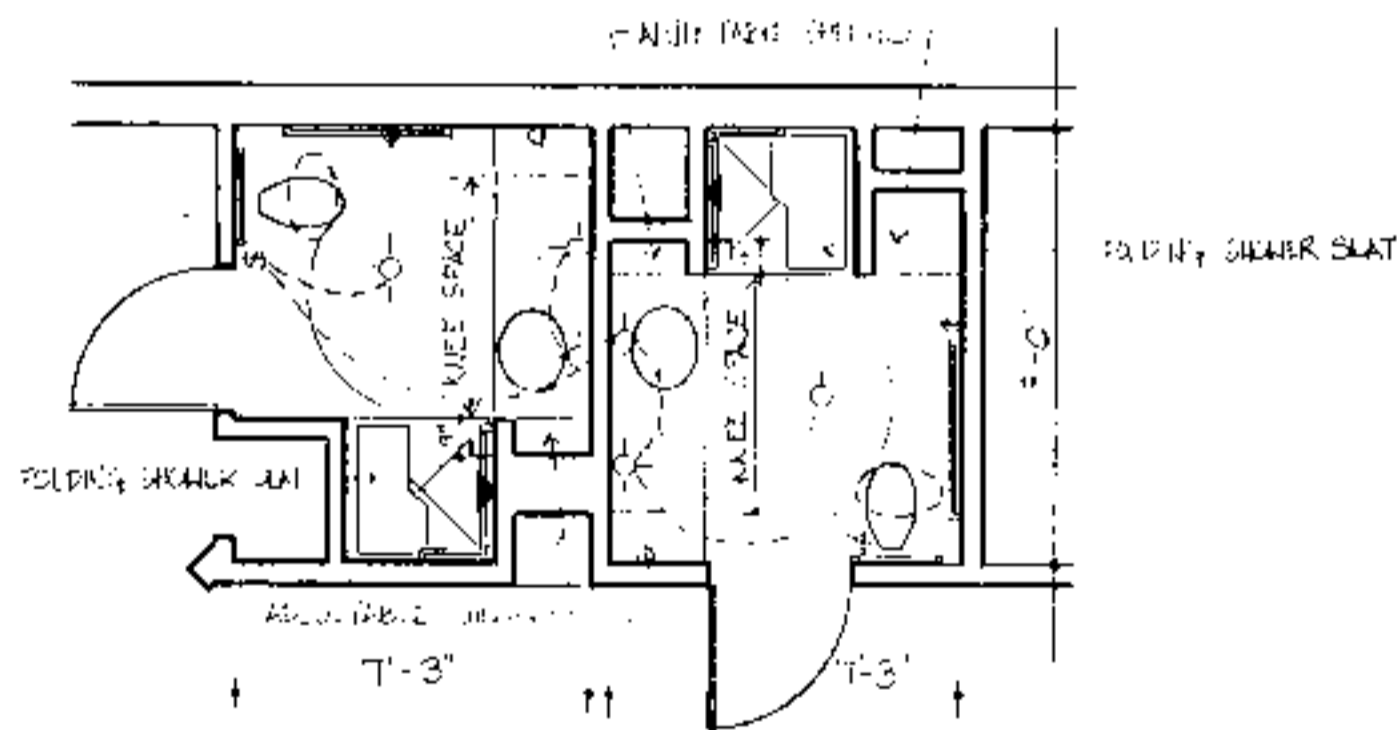
Accessible House Plan # 4A
 Adapted from NC Collection Plan # A
 North Carolina Cooperative Extension Service
 NCSU Home Economics - Housing
 Box 7605
 Raleigh, NC 27695-7605
 US Department of Agriculture, Cooperating

PLAN DATA

Sheet 2 of 6
 Date May 93



BATHROOM OPTION - 5'x5' ROLL IN SHOWER
1/4" = 1'-0"



BATHROOM OPTION - 7'x7' TRANSFER SHOWER
1/4" = 1'-0"

House # 2

Door Schedule		Symbol	
Mark	Size	Description	No. Required
1	3'0" x 6'8"	exterior hardwood w/side light	1
2	3'0" x 6'8"	interior hardwood	5
3	3'0" x 6'8"	exterior hardwood	1
4	3'0" x 6'8"	int. hardwood (closet)	2
5	5'0" x 6'8"	interior bifold	1

Window Schedule		Symbol	
Mark	Size	Description	No. Required
A	3'0" x 5'2"	casement	6
B	6'0" x 5'2"	casement	1
C	3'0" x 3'2"	casement	2
D	6'0" x 3'2"	casement	1

DISCLAIMER These plans are supplements to plans offered by the NC Cooperative Extension Service. They are intended to improve access for people with mobility impairments and are provided for information purposes only. It is the responsibility of the contractor and owner to comply with all the applicable federal, state and local codes, ordinances and regulations in the construction of the house. Modifications to these plans are needed to meet special individual needs of people with disabilities and they also be necessary to comply with specific requirements for energy codes, wind, seismic, snow or other special loading conditions. This set must be used in conjunction with the Extension Service plans and all other notes and recommended details must be coordinated with the original set and verified in the field by the owner and contractor. For information on product manufacturers contact the Center for Accessible Housing.

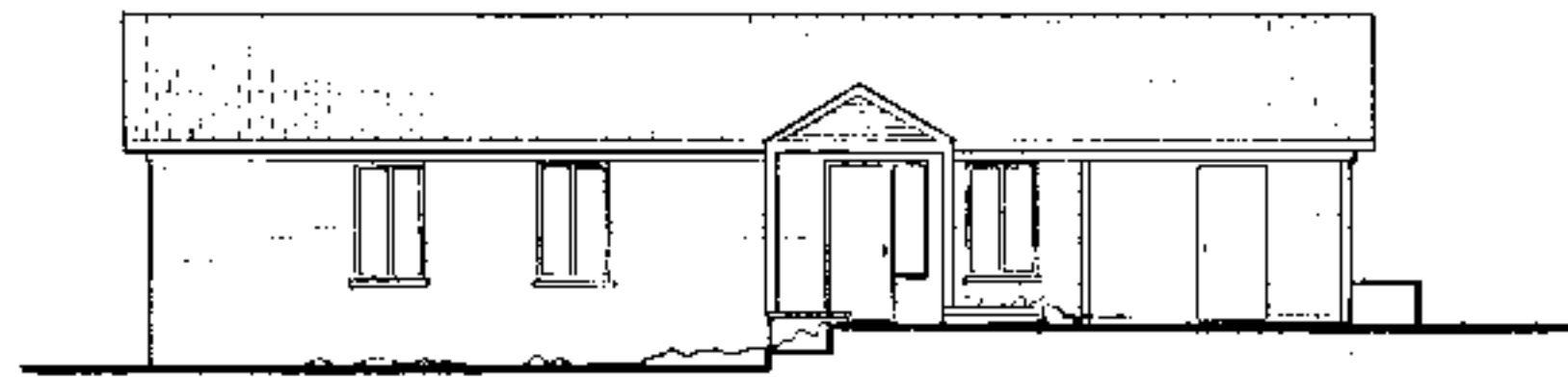
BUILDING DATA	
# Bedrooms	3
Square Footage: heated	1032
storage/corridor	223
porch	72
total	1327

PLAN DATA
Adapted by: C. Sanchez
Drawn by: C. Humkey
Approved by: R. Mace

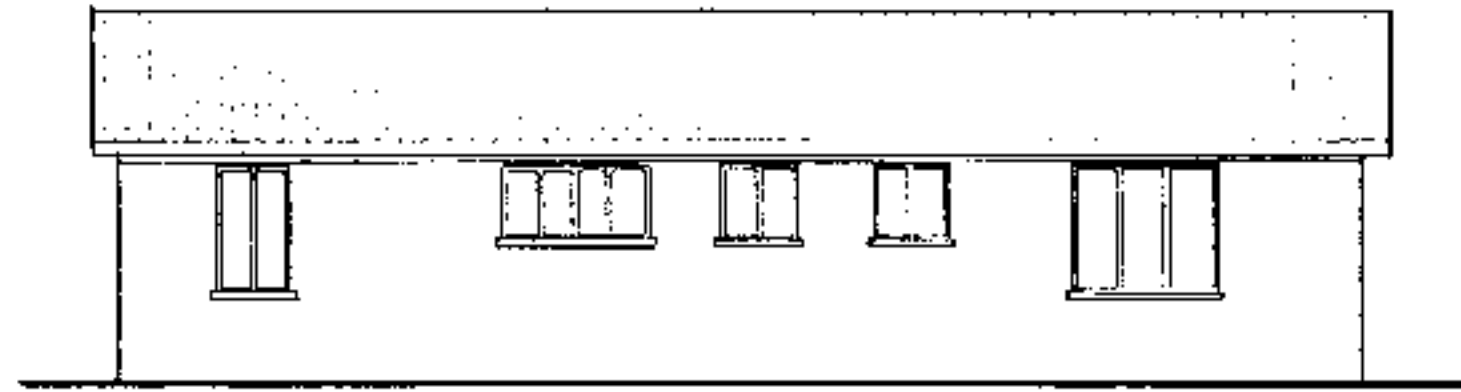
Center for Accessible Housing
School of Design
NCSU
Box 8613
Raleigh, NC 27695-8613
919.515.3082 voice/TDD
919.515.3023 fax

Accessible House Plan # 4A
Adapted from NC Collection Plan # 4
North Carolina Cooperative Extension Service
NCSU Home Economics - Housing
Box 7605
Raleigh, NC 27695-7605
US Department of Agriculture, Cooperating

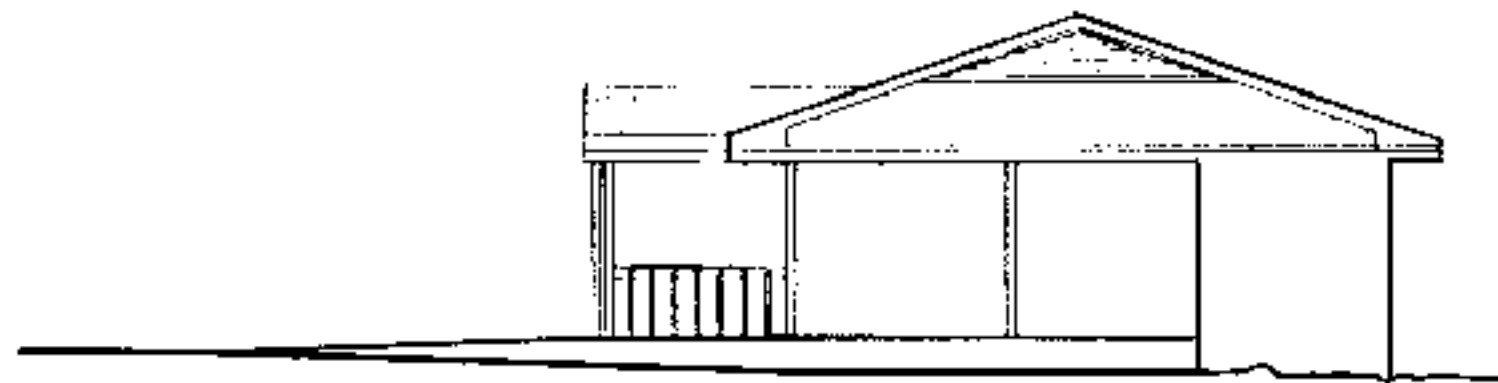
PLAN DATA
Sheet 3 of 6
Date May 93



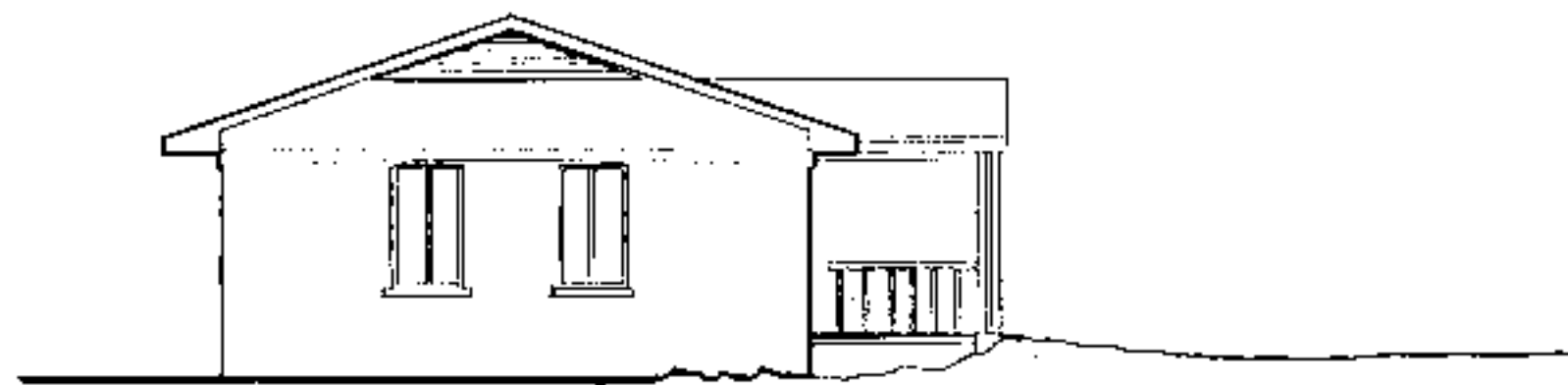
FRONT ELEVATION
1/8" = 1'-0"



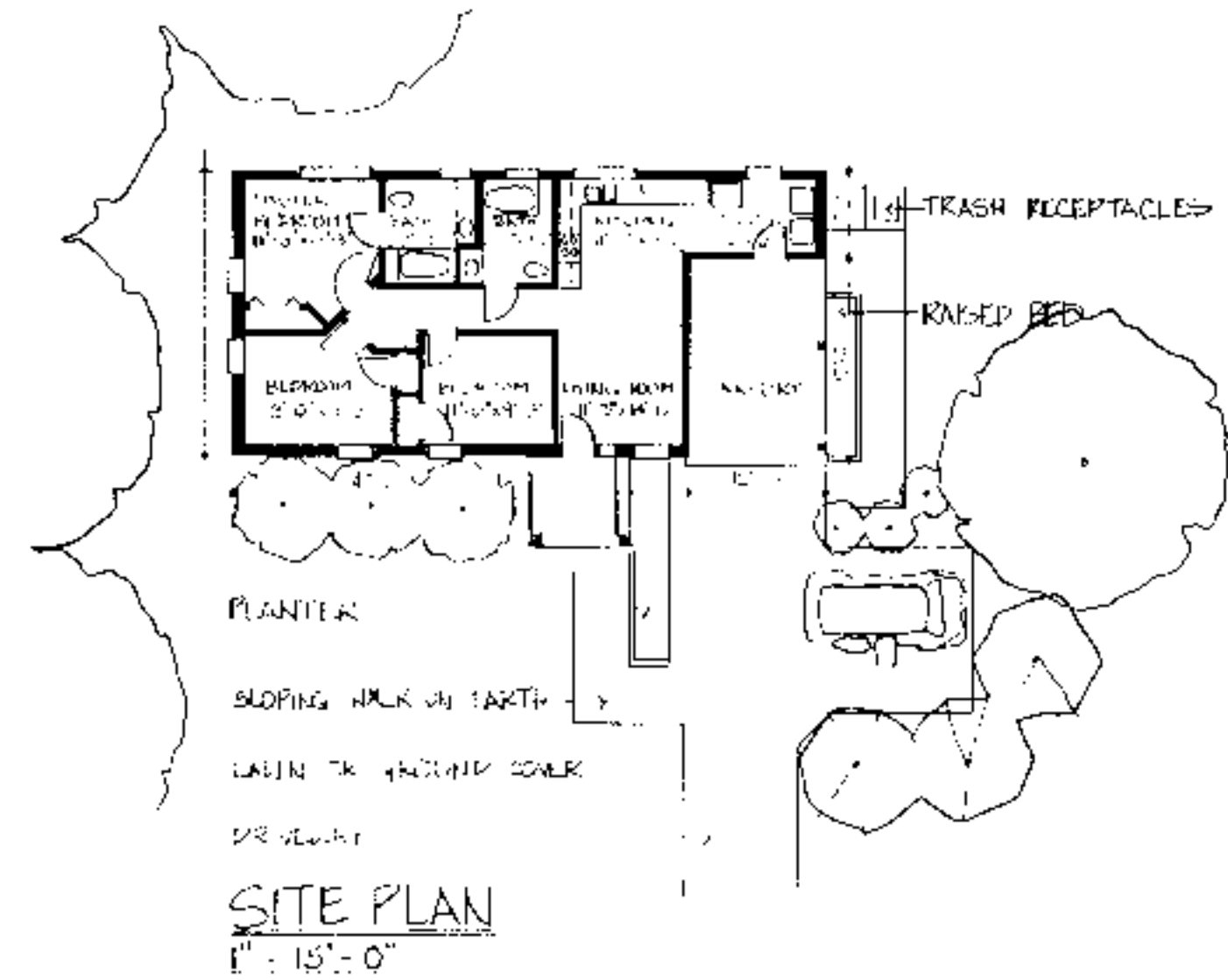
REAR ELEVATION
1/8" = 1'-0"



RIGHT SIDE ELEVATION
1/8" = 1'-0"



LEFT SIDE ELEVATION
1/8" = 1'-0"



Site Plan Notes

- When siting house and designing exterior walkways, consider topography, existing vegetation, solar orientation, and drainage.
- Eliminate the need for a ramp or limit its length and slope by placing the foundation as close to the ground as possible.
- Create attractive accessible entrances utilizing earthwork and site grading. Short wood framed bridges spanning from the elevated floor of the house to an uphill site location eliminate the need for special drainage, waterproofing and ventilation measures. On flatter sites, the bridge solution is possible by building an earth berm and retaining wall with a sloped walk.
- Locate walkways to provide convenient access to the parking area, house entrances, outside sitting area, mail/newspaper delivery area, and trash/recycling receptacles. Provide 1/2 inch raised edge on the side of walkways to prevent stroller or wheelchairs from rolling off accidentally.
- Create attractive enclosure for trash/recycling containers, that would also prevent them from blowing over or being disturbed by animals.
- Provide raised beds for gardening, an outside entertaining area and a recreational/play area. Locate raised beds/vegetable/flower near walkways, entrances and seating areas to maximize enjoyment, while facilitating ease of maintenance.
- When designing outside features, such as railings, or raised beds, use similar architectural details, color, and building materials as in the (exterior) residence.
- Consider minimizing lawn space, or replacing it entirely with ground cover or mulch to reduce maintenance.
- Select plants which are appropriate for the soil and climate, such as indigenous species, to reduce maintenance. Include a variety of species of ground cover, and size and species of shrubbery to improve the ecological balance and wild life habitat.
- Choose plants which will mature at the desired height and provide year-round interest in views both outside and from within the house.
- Use multisense plants (those with interesting color, textures, fragrance, or edible part) and plants which attract birds and butterflies to maximize landscape enjoyment without increasing maintenance.

DISCLAIMER These plans are supplements to plans offered by the NC Cooperative Extension Service. They are intended to improve access for people with mobility impairments and are provided for information purposes only. It is the responsibility of the contractor and owner to comply with all the applicable federal, state and local codes, ordinances and regulations in the construction of the house. Modifications to these plans will be needed to meet special individual needs of people with disabilities and they also be necessary to comply with specific requirements for energy codes, wind, seismic, snow or other special loading conditions. The set must be used in conjunction with the Extension Service plans and all dimensions notes and recommended details must be coordinated with the original set and verified in the field by the owner and contractor. For information on product manufacturers contact the Center for Accessible Housing.

BUILDING DATA	
# Bedrooms	3
Square Footage: heated	1032
storage/corpor	223
porch	72
total	1327

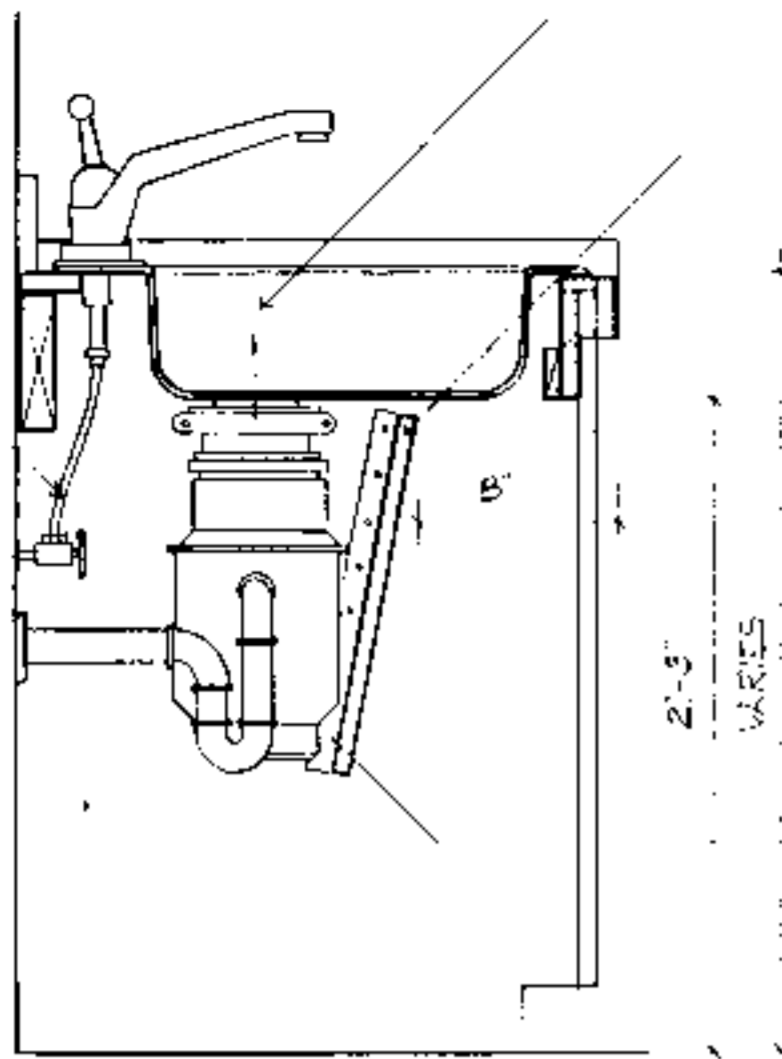
PLAN DATA
Adapted by: C. Sanchez
Drawn by: C. Humkey
Approved by: R. Mace

Center for Accessible Housing
School of Design
NCSU
Box 8613
Raleigh, NC 27695-8613
919.515.3082 voice/TDD
919.515.3023 fax

Accessible House Plan # 4A
Adapted from NC Collection Plan # 4
North Carolina Cooperative Extension Service
NCSU Home Economics - Housing
Box 7605
Raleigh, NC 27695-7605
US Department of Agriculture, Cooperating

PLAN DATA
Sheet 4 of 6
Date May 93

FLEXIBLE SUPPLY PIPES



MOEN SINK E-2522 4 HL/HR

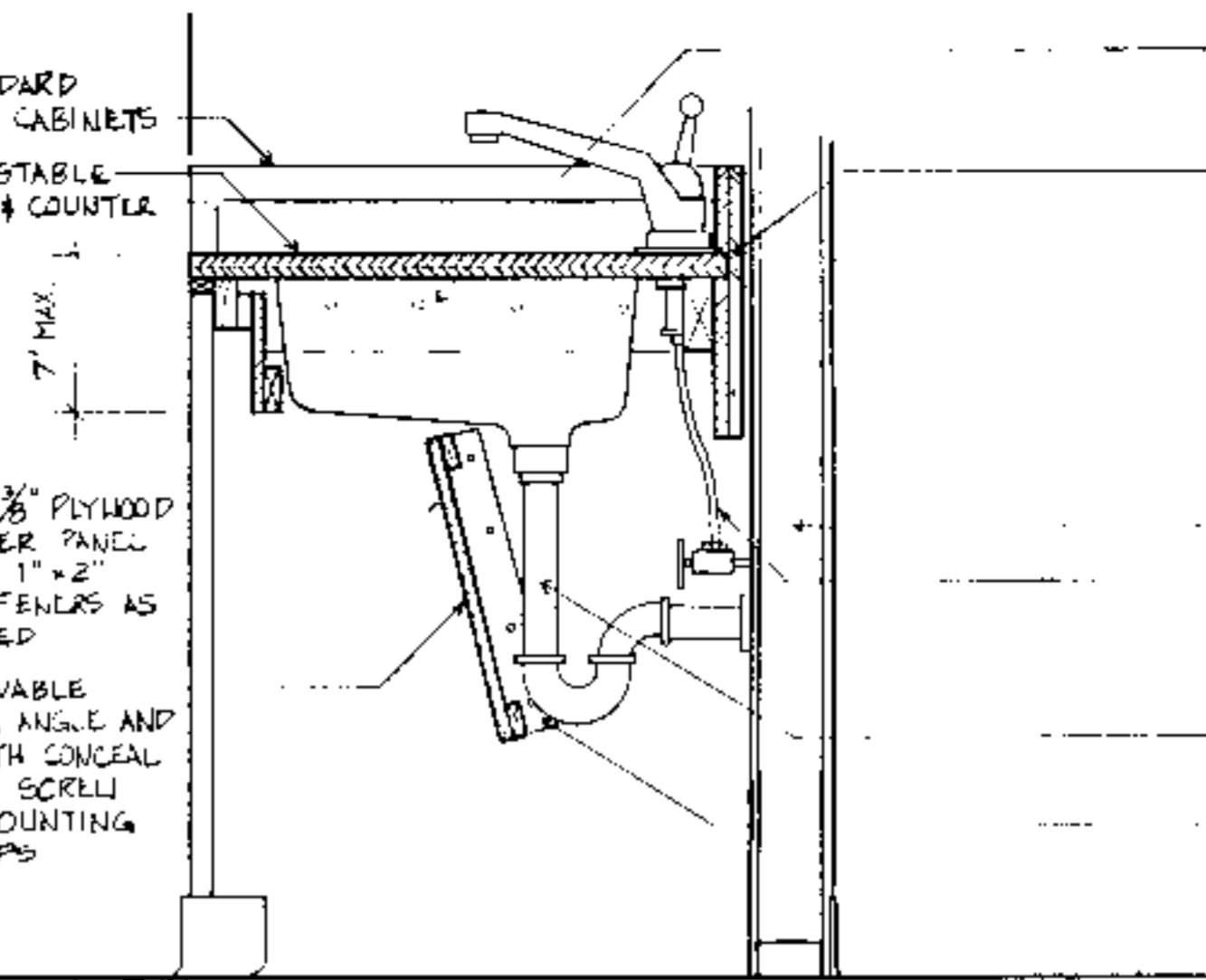
PIPE PROTECTION PANEL
1/4" TO 3/8" PLYWOOD
VENEER PANEL

1" x 2" MOUNTING STRIPS
AT CABINET BEYOND

TYPICAL SECTION AT GARBAGE DISPOSAL ENCLOSURE

1/2" = 1'-0"

STANDARD
BASE CABINETS
ADJUSTABLE
SINK & COUNTER



1/4" TO 3/8" PLYWOOD
VENEER PANEL
WITH 1" x 2"
STIFFENERS AS
NEEDED

REMOVABLE
PANEL, ANGLE AND
LENGTH CONCEAL
PIPES SCREW
TO MOUNTING
STRIPS

MOVABLE WOOD BLOCK
SUPPORT AT
ADJACENT CABINETS

3/4" PLYWOOD WITH
PLASTIC LAMINATE

STUD KNEE WALL

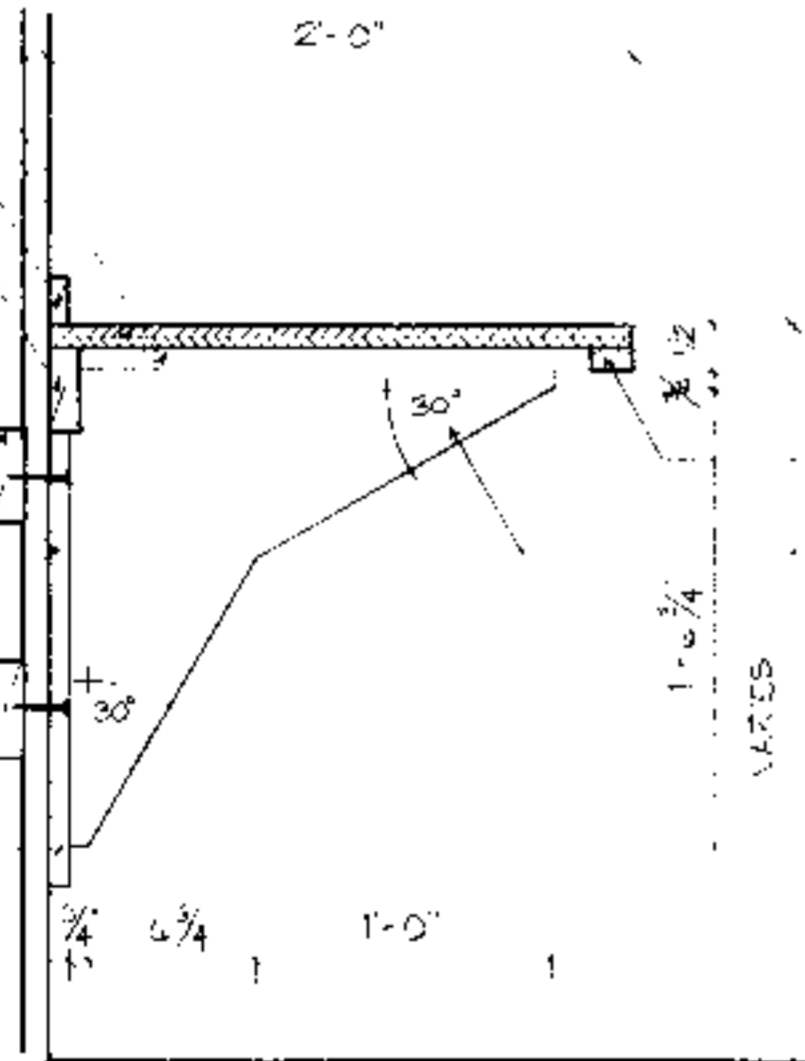
TAIL PIECE WITH
SLIP JOINT

1" x 2" MOUNTING STRIPS
AT CABINET BEYOND

TYPICAL ADJUSTABLE SINK & COUNTER DETAIL

1/2" = 1'-0"

1" x 4" FLANGE
3/4" PLYWOOD WITH
PLASTIC LAMINATE
1" x 2" BACKSLASH
2" x 4"



SOLID WOOD
STRUCTURAL BLOCKING
BETWEEN STUDS IN
BRACKETS AS NECESSARY

BRACKET FLANGE
SCREWED NAILED OR
BOLTED TO BLOCKING
OR STUDS AS NECESSARY
TO SUPPORT ALL LOADS

1" x 4" SOLID WOOD
FLANGE ROUTED,
LET IN, GLUED AND
NAILED TO PLYWOOD

1" x 2"

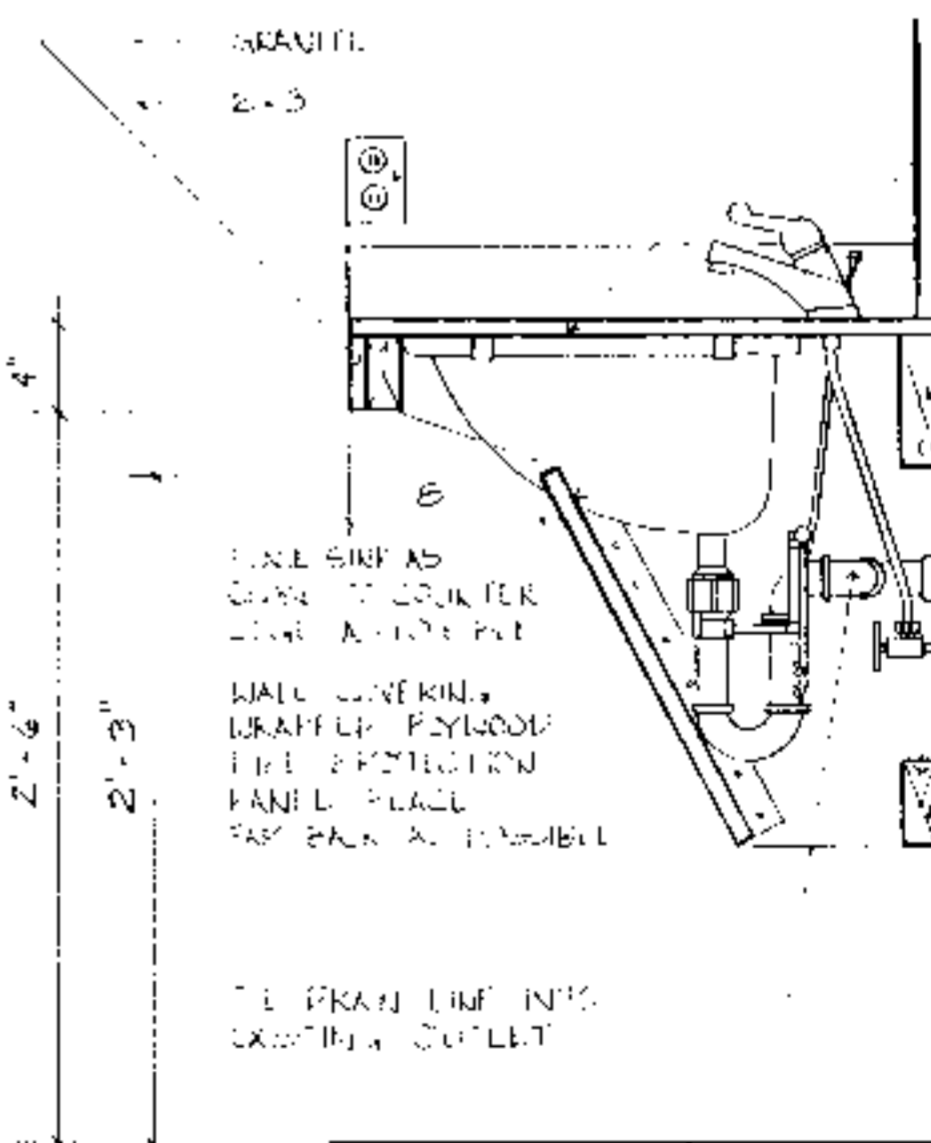
3/4" BIRCH VENEER PLYWOOD
WITH 3/4" x 3/4" SOLID WOOD
EDGE BAN LET-IN, GULFED
AND NAILED

NEW RECEPTACLE

GRANITE COUNTER TOP

CUT OUT PIPE
PROTECTION PANEL
AROUND SINK EQUAL

CONTINUOUS WOOD
SUPPORT EQUAL
OR SCREWED TO
METAL STUDS



LINE SINK AS
COUNTERTOP
LEVEL AND SET

WALL COVERING
BRACKET PLYWOOD
PIPE PROTECTION
PANEL FLANGE
FASTENED TO STUDS

THE PRAN LINE INTO
DRAINING OUTLET

TYPICAL SECTION THROUGH BATHROOM COUNTER AND SINK

1/2" = 1'-0"

DISCLAIMER These plans are supplements to plans offered by the NC Cooperative Extension Service. They are intended to improve access for people with mobility impairments and are provided for information purposes only. It is the responsibility of the contractor and owner to comply with all the applicable federal, state and local codes, ordinances and regulations in the construction of the house. Modifications to these plans will be needed to meet special individual needs of people with disabilities and may also be necessary to comply with specific requirements for energy codes, wind, seismic, snow or other special loading conditions. This set must be used in conjunction with the Extension Service plans and all dimensions notes and recommended details must be co-ordinated with the original set and verified in the field by the owner and contractor. For information on product manufacturers contact the Center for Accessible Housing.

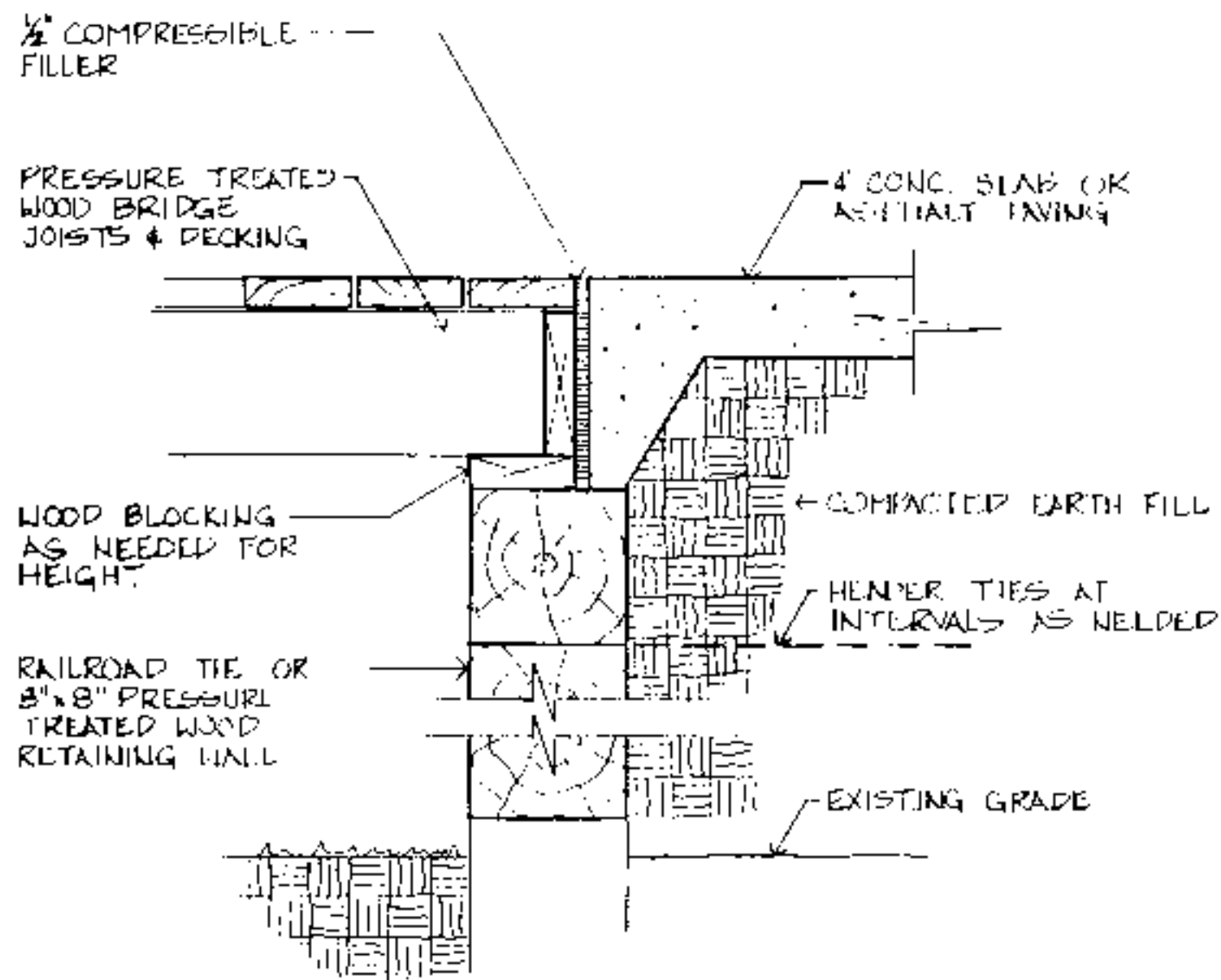
BUILDING DATA	
# Bedrooms	_____
Square Footage: heated	_____
storage/corridor	_____
porch	_____
total	_____

PLAN DATA	
Adapted by:	C. Sanchez
Drawn by:	C. Humkey
Approved by:	R. Mace

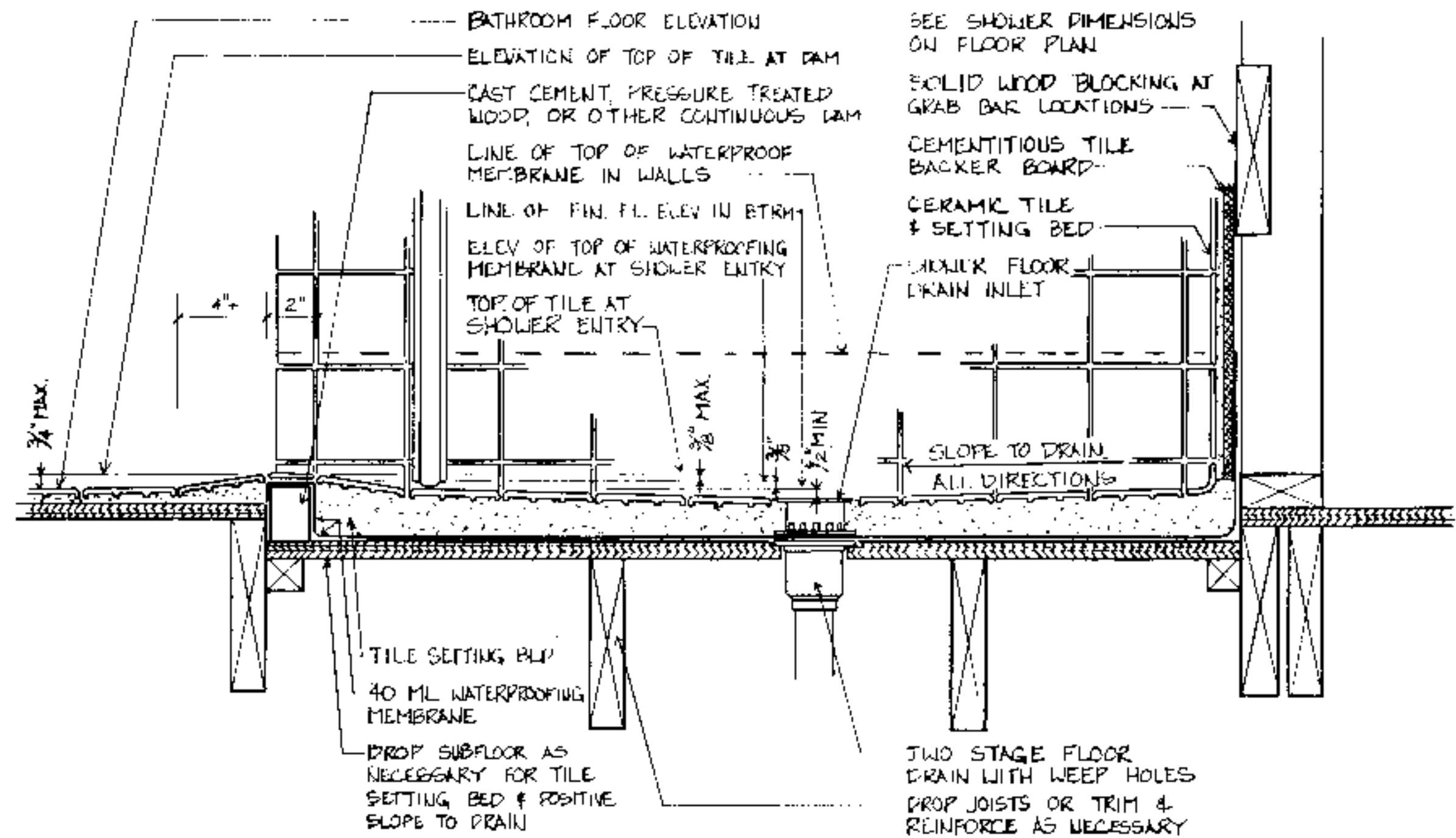
Center for Accessible Housing
School of Design
NCSU
Box 8613
Raleigh, NC 27695-8613
919-515-3082 voice/TDD
919-515-3023 fax

Accessible House Plan # _____
Adapted from NC Collection Plan # _____
North Carolina Cooperative Extension Service
NCSU Home Economics - Housing
Box 7605
Raleigh, NC 27695-7605
US Department of Agriculture, Cooperating

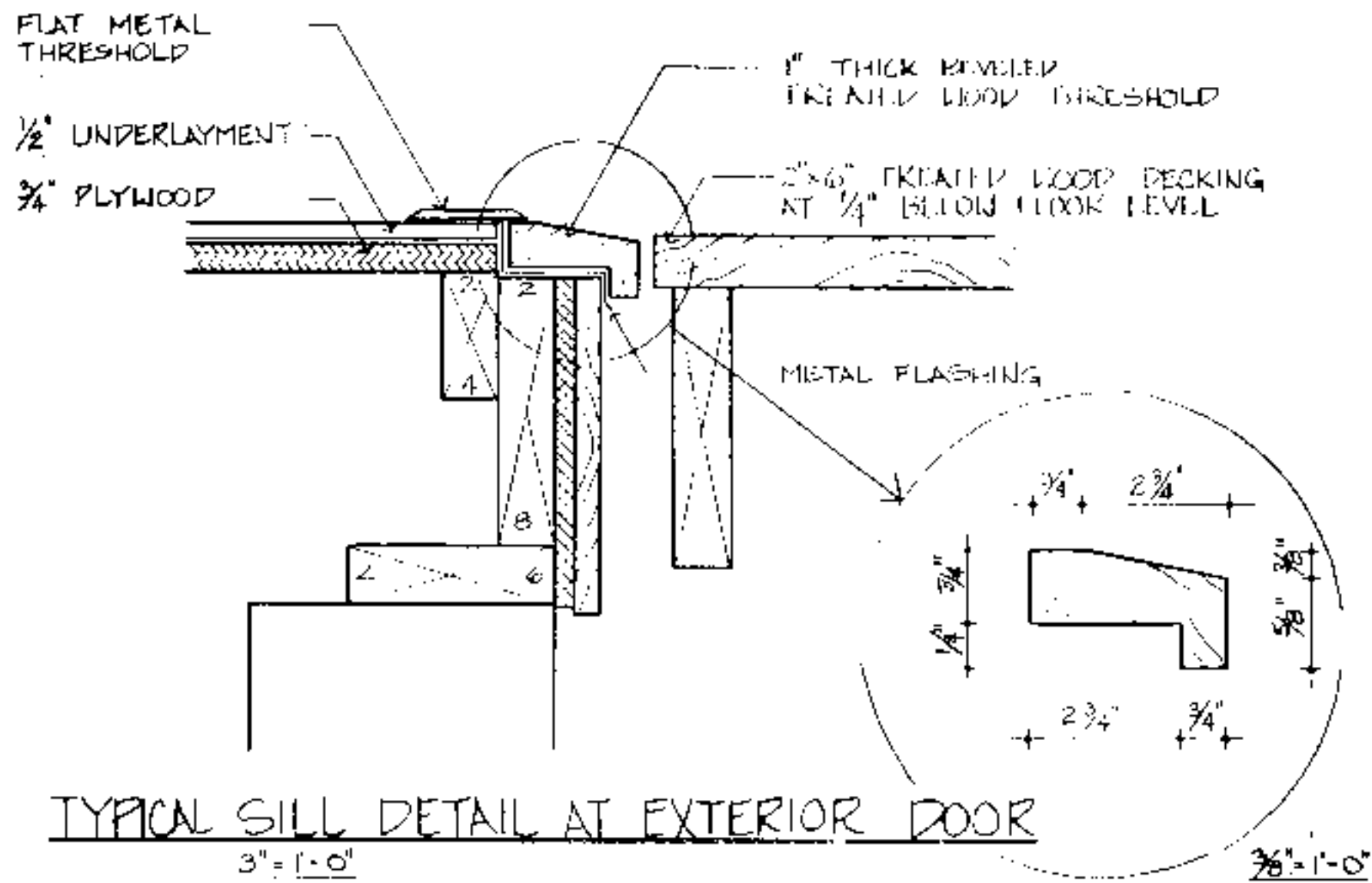
PLAN DATA	
Sheet	5 of 6
Date	May 93



TYPICAL BRIDGE END DETAIL
 $\frac{1}{2}" = 1'-0"$



TYPICAL ROLL-IN SHOWER FLOOR & DRAIN DETAIL AT WOOD FRAME CONSTRUCTION
 $3" = 1'-0"$



TYPICAL SILL DETAIL AT EXTERIOR DOOR
 $3" = 1'-0"$

DISCLAIMER
 These plans are supplements to plans offered by the NC Cooperative Extension Service. They are intended to improve access to people with mobility impairments and are provided for information purposes only. It is the responsibility of the contractor and owner to comply with all applicable federal, state and local codes, ordinances and regulations in the construction of the house. Modifications to these plans will be needed to meet special individual needs of people with disabilities and may also be necessary to comply with specific requirements for energy codes, wind, seismic, snow or other special loading conditions. These plans must be used in conjunction with the Extension Service plans and all dimensions, notes and recommended details must be co-ordinated with the original set and verified in the field by the owner and contractor. For information on product manufacturers contact the Center for Accessible Housing.

BUILDING DATA	
# Bedrooms	_____
Square Footage: heated	_____
storage/carpet	_____
porch	_____
total	_____

PLAN DATA	
Adapted by:	C. Sanchez
Drawn by:	C. Humkey
Approved by:	R. Moore

Center for Accessible Housing
 School of Design
 NCSU
 Box 8613
 Raleigh, NC 27695-8613
 919.515.3082 voice/TDD
 919.515.3023 fax

Accessible House Plan # _____
 Adapted from NC Collection Plan # _____
 North Carolina Cooperative Extension Service
 NCSU Home Economics - Housing
 Box 7605
 Raleigh, NC 27695-7605
 US Department of Agriculture, Cooperating

PLAN	DATE
Sheet 6 of 6	Date May 93